

# ADVANCED CCTV SYMBOLS™

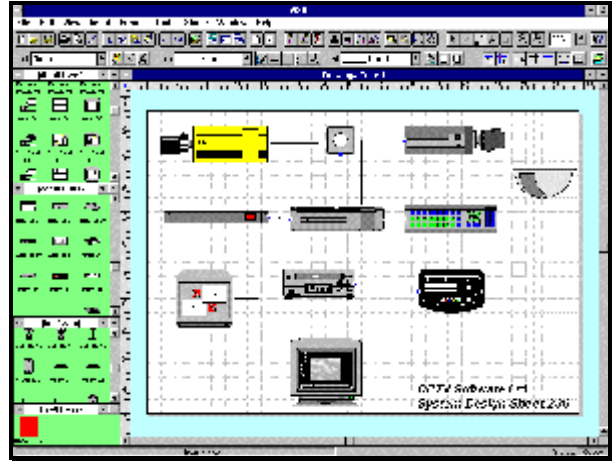
## DATA SHEET

ADVANCED CCTV SYMBOLS is a software package designed to work with any VISIO or SMARTDRAW 'drag and drop' drawing package. It contains pre-configured shapes, symbols and descriptions for all the main CCTV product areas such as cameras, housings, pan/tilts, transmission equipment, control equipment, VCRs and monitors as well as combinations of these products, such as 'outdoor PTZ camera'. ADVANCED CCTV SYMBOLS software contains over 500 colour symbols for use within Visio. Many of the symbols are model specific and you can show the equipment you use.

Symbols such as walls, gates and fences are also included to allow a overhead layout of the site to be drawn.

ADVANCED CCTV SYMBOLS is ideal for CCTV professionals who want to produce good-looking CCTV system drawings.

ADVANCED CCTV SYMBOLS is available in English, French, German, Italian and Spanish.



<u>Hardware / Software</u>	<u>Requirements</u>
<b>PC &amp; Display</b>	486 33Mhz or higher with VGA or SVGA. Pentium recommended.
<b>PC Ram</b>	8 MB or above
<b>PC Hard drive</b>	280 MB or above free
<b>PC Floppy drive</b>	3.5" 1.44MB
<b>PC Pointing device</b>	MS mouse or Compatible pointing device
<b>PC Parallel port and printer</b>	1 parallel port for use with Windows compatible printer.
<b>Drawing package required</b>	VISIO 4 and above, order on part number VISIO4.0, VISIO5.0, VISIO2000 or VISIO2002  SMARTDRAW 5 and above.
<b>PC Graphical environment</b>	VISIO 4.0 - MS Windows 3.1 or above VISIO 5.0, VISIO2000 - Windows 95, 98, NT or XP SMARTDRAW - Windows 95, 98, NT or XP



<b>U.K. OFFICE</b>	CCTV SOFTWARE LTD 37 CHAMBRES ROAD SOUTHPORT MERSEYSIDE PR8 6JG U.K. TEL +44 (0) 1704 548675 FAX +44 (0) 1704 548679	<b>U.S. OFFICE</b>	CCTV SOFTWARE INC 10560 MAIN STREET SUITE 415 FAIRFAX VA 22030 U.S.A sales@cctvsoftware.net
<b>E-MAIL</b> <a href="mailto:sales@cctvsoftware.co.uk">sales@cctvsoftware.co.uk</a>		<b>INTERNET PAGE</b> <a href="http://www.cctvsoftware.com">www.cctvsoftware.com</a>	
		Ref:ADVCCTVSYM052002	