

DiREX-V8

Compact customizable eight-channel video encoding or optionally video analytics array



DiREX-V8 in desktop assembly

Optional S8L2G-4POE switch

BNC plate with optional BWA-RM1 kit

- H.264 streaming with multi NAS support
- Motion detection fields with pre-recording
- Optionally advances video analytics units
- Eight stand-alone Linux-powered engines
- Bundled restriction-free MV2 software
- USB with screw locking, eight LAN ports
- Low voltage power supply via PoE ports
- 10"/19" rack mountable, 1U (low depth)

The compact **DiREX-V8** network video array converts up to eight analog video signals into highly compressed IP streams - based on **DiREX-ONE** engines (progressive scan or dual resolution video). No any special IP-NVRs (network video recorders) are necessary - if required, the recording of the video data can be performed on several conventional NAS devices (network attached storage) simultaneously. Proprietary H.264+ approach with AME (Advanced Motion Estimation) delivering up to 40% more video compression efficiency than standard H.264-BP implementations.

Alternatively each channel can be equipped with stand-alone video analytics engines - based on **DiREX-SCAN** (panoramic view with external PTZ facial zooming) or **DiREX-PARKING** (ANPR).

The **DiREX-V8** consumes very little power and can be used as a stand-alone desktop device or rack mounted with up to 32 video channels in a 19" 1U form factor.

Technical Data

Possible engines

(factory installed)

**DiREX-ONE.10, DiREX-ONE.11,
DiREX-SCAN, DiREX-PARKING (Q4/10)**

Operation temperature

-10 ... +60 °C (fan-free design)

Power consumption

approx. 23 W (4x PoE, Class 2)

Scope of delivery

DiREX-V8, 8x BNC pigtailes, CD

Visualization PC, minimum

(8 channels, incl. deinterlacing)

Quad-Core 2 GHz CPU, 2 GB RAM,
dedicated graphic with 256 MB

Connectors

8x video inputs: 75 Ω, 1 Vpp (PAL or NTSC)
8x audio inputs: 2 kΩ, 0.25 Vpp (line-in)
8x service: RS-232 (for each engine)
8x LAN (4x PoE): 10/100 Base-T, RJ45
1x USB (1st channel): GPS NMEA data input, PTZ control

Weight

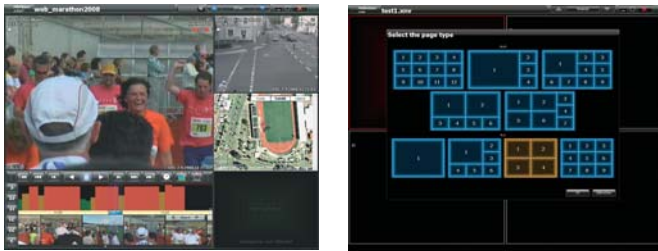
approx. 1.3 kg

Dimensions

217x44x165 mm (mounted BNCs)
217x44x120 mm (dislocated BNCs)

Software

The bundled **BWA Multi-Vision** software can remotely monitor live and recorded data from several time-synchronized video sources and provide cross-platform analysis. Integration of Google Maps is also supported and NMEA positional data can be logged from a GPS receiver via a screw lockable USB interface.



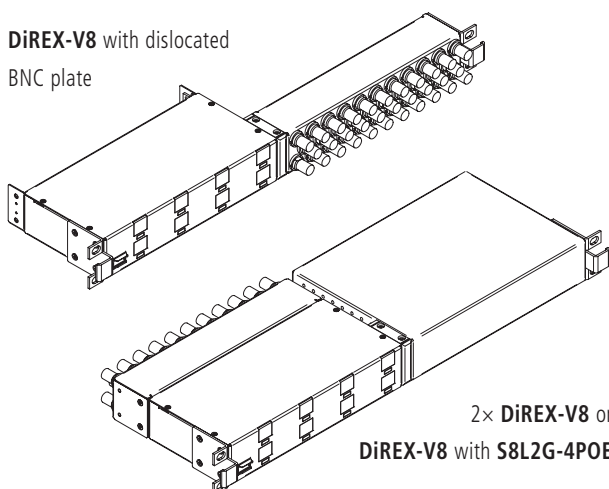
Video Encoder Efficiency

Typical space consumption with max. bitrate limited to 3000 Kbps:

H.264 (AME)	Video	Audio	FPS	MB/hour
D-ONE.10	1	+	25	708
		-	25	674
		-	12.5	344
	2	+	6.25	241
		-	25	768
		-	12.5	408
D-ONE.11	1	+	6.25	305
		-	25	1356
		-	12.5	689
	2	+	25	518
		-	25	1315
		-	12.5	689

19" Rack Mounting (BWA-RM1)

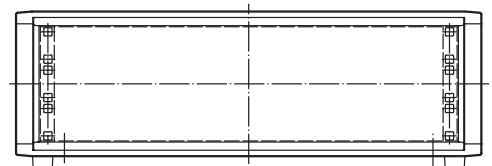
DiREX-V8 with dislocated
BNC plate



2x DiREX-V8 or
DiREX-V8 with S8L2G-4POE

Optional Accessories

- **BWA-RM1** 10"/19" rack mounting kit (DiREX-V8 or S8L2G)
- **S8L2G-4POE** Layer 2+, 8 ports (4 PoE) remotely managed switch with 1000B-T/SFP uplink port, 217x44x140 mm
- **BWA-CS3U** 3U (or 4U) polycarbonate case, lockable transparent door and wall mounting, 560x185x484 mm



Configuration for tamper-proof 32 channel system:
4x DiREX-V8, 3x BWA-RM1, S8L2G-4POE, 1U NAS (8 TB),
HP 2610-24/12PWR, 1U UPS (sine wave), BWA-CS4U