

**Access Control
Management System**
Standard Edition 7

smax™

**Access Control so simple
anyone can use it!**





The security market has been looking for an access control system that doesn't take a science degree to configure and use... and BQT Solutions can deliver it!

The SmaX Access Control Management System is a sophisticated, intelligent and cost effective security system. It provides ease of access to authorised personnel and keeps out unwanted visitors. It also provides movement control of who goes where and when within a facility through a web browser interface that can be accessed from anywhere.

SmaX has been designed with the user in mind. Set up and configuration is fast and the system is easy to manage. Most importantly, it's totally scaleable and can be expanded as your needs grow.

Many unique features make SmaX a powerful and flexible solution suitable for any site. It delivers much more than a standard 'PROX' or 'Swipe' card based system and readily integrates with various security technologies including contactless smart card and biometric recognition. It can be tailored to meet any level of security required.

The SmaX system is different from others as door controllers are not required. SmaX uses intelligent devices that make the decisions at the door. Access permissions and transactions are carried out in these devices which report directly to the main system in real time. If the SmaX system goes down at any point, these devices ensure system continuity without compromising security.

Doing away with everyday access control systems, SmaX reduces the cost and stress involved in the management of staff and building security.



A total security solution at your fingertips

Never before has there been a cost effective access system with all these benefits:

- **Secure your premises, assets and employees 24 x 7 with one fully integrated system**
- **Control doors, gates and other access points in real time from a single PC**
- **System can be configured and administered remotely for multiple sites and monitored via the web**
- **Manage restricted areas by establishing specific access zones within the system**
- **Monitor the movement of employees, visitors and contractors through your premises**
- **Prevent access to users or block lost cards from being used with the 'Hotlist' facility**
- **Prevent unwanted users accessing the system with Smart Card or Fingerprint login**



Smax uses plain language and easy to navigate



Zones are designed to easily facilitate the grouping of entry and exit points within a facility. Entry or exit points are defined through the Devices setup. Zones are used to simplify the set-up of Access Rules and to facilitate Anitpassback (tailgating) features. Zones allow an operator to know who is in a particular area at any given time which may be critical in mustering or emergency situations.



TimeZones are configured in the SmaX system to control general access into a facility and also manage restricted areas by establishing specific access zones. TimeZones are created during the initial setup and configured by the System Provider/Contractor with your input.

Example:

Business Hours: 08.30 to 17.30 Monday to Friday

Cleaning Hours: 18.00 to 20.30 Monday to Friday

When TimeZones are combined with Zones, an Access Rule is created.



Access Rules are assigned to individual personnel according to their authorised access levels and used to control where and when they may have access to a facility. Access Rules are created during the initial setup and configured by the System Provider/Contractor with your input.

Note: Zones and TimeZones must be defined before an Access Rule can be created. Access Rules are created for groups of employees/users and contain a list of Zones and associated TimeZones for access.

Example:

Office Staff Zone = Office Door Time Zone = Business Hours

Cleaners Zone = Lobby Door Time Zone = Cleaning Hours

When adding new personnel, an Access Rule is assigned to them from a drop down list in the Personnel screen.



Devices allows an operator to add or delete access devices such as smart card or biometric readers to the SmaX system. This is usually carried out during the initial setup and configured by the system Provider/Contractor.

Any Wiegand device can be added to the system such as a Card Reader, PIN Card Reader, Fingerprint, Iris or Facial scanner.



Personnel allows an operator to add, delete or update employees/users in SmaX and is usually the most frequently used function of the system. Personnel photos can be imported into the SmaX for displaying in reports or Live Event Monitoring.

If a user has ceased employment or has lost a card used to access a facility, the card can be HOTLISTED preventing its further use and possible security breaches.



Holidays allows periods of time such as public or festive season holidays to be added to your SmaX system. Holiday information overrides the systems Access Rules so you don't have to create separate rules for these days. By default access will be denied to all personnel except those who have all access privileges (24 hour / 7 day).

icons to guide you through the control system



Live Event Monitor provides a live visual audit of personnel and events in the SmaX system. It displays everything from changes made to the system by the operator to reports, personnel movement, forced door entries and attempted access.

Multiple options in Live Event Monitor allow for specific monitoring. When personnel move throughout the system their ID details and photo are displayed in real time along with the device/door, time and date. This feature is ideal for temporary receptionists who may not be familiar with staff members that are entering the facility as it provides them with a visual identifier for verification.

Example: The receptionist can be assigned an Operator level which only allows them to view the Live Event Monitor.



Reports is a useful tool enabling an operator to produce various reports on activities within the SmaX system for a multitude of applications such as Time & Attendance, Payroll and Human Resource Management.

Reporting functionality is designed with flexibility to allow reports to be produced on particular personnel, doors, time periods, sites, operators and different types of logs in the system. Customised fields can be added or deleted for display in the report and an export function allowing the report to be used in 3rd party application such as accounting systems.



Operators are users of the system that have access to the SmaX Web interface. Operators are issued with a username, password and privileges by the Administrator to control the site features. Depending on the privileges assigned, an Operator can view, modify, add or delete data in the system.



Site Settings enables the Administrator to create a unique name for the SmaX site, choose the format of the card readers and configure other site settings and additional user options such as creating unique user ID. The system may be configured with an IP address allowing access over the internet.



Sentinal is a CCTV Surveillance application that is integrated with the SmaX system. Up to 16 cameras can be seamlessly administered and configured via a web browser interface.

Equipment Flowchart

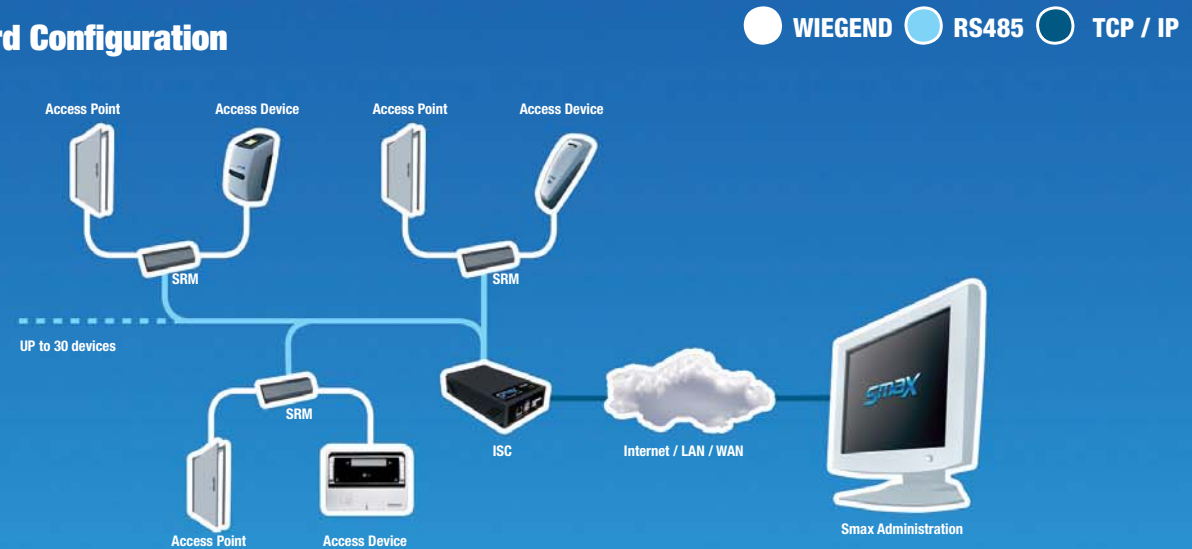
The SmaX systems communicates to the access devices through SRM's which are connected to an ISC. Each ISC can support up to 30 access devices. These can be any Wiegand device such as a Card Reader, PIN Card Reader, Fingerprint, Iris or Facial scanner.

The system can be extended to support more devices by adding further ISC devices to the system. An ISC can be located on different levels of a building, or even across multiple sites and connected back to the main system via the Internet, LAN or WAN.

When connecting more than 3 ISC's to the SmaX system, a 'Head-end' server is added to ensure that there is no degradation in communication speed between the system and all devices.

Features of the SmaX system, such as Live Event Monitoring can be accessed by a user with the appropriate permissions from any location configured within the system.

Standard Configuration



Multi-Site Configuration and Remote Access



SmaX Hardware

System Requirements

Enrolment & Administration

- Microsoft Windows 2000 & XP
- Internet Explorer
- Pentium 4 2.0 GHz
- 512 RAM
- CD/DVD Drive
- Powered USB 1.1 or later
- 10/100 base + network connection

Reporting & General Administration

- PC or MAC
- 10/100 base + network connection
- Supported browsers: Internet Explorer, Mozilla Firefox, Safari

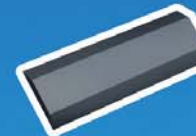


Intelligent Site Controller (ISC)

The ISC has an embedded Linux server that provides a web interface for controlling and managing the SmaX system. The SmaX database resides in the ISC and can be easily backed up to a computer facilitating redundancy requirements. The ISC has an RS485 interface to provide direct connection to the Secure Relay Module (SRM) and devices connected to the system.

The ISC can be accessed over a Wide Area Network (WAN) or Local Area Network (LAN) allowing the system to be configured and controlled from a secure off-site location.

Power requirement	12Vdc
Input/Output	RS485
Network Communication	TCP/IP
Operating System	Linux
Web Server	Apache
Database Server	MYSQL
SmaX Server	Constant Communication with SRM's on RS485 network
Memory	500MB Compact Flash - upgradeable to 1GB
Dimensions	180mm x 109mm x 48mm (7.09" x 4.29" x 1.89")



Secure Relay Module (SRM)

The SRM is an intelligent module which facilitates access control decisions and communicates with the SmaX system. The SRM can act independently from SmaX allowing the system to function normally even if the ISC is offline. If the ISC loses power or crashes, the system will continue to operate without compromising security. Up to 2,000 card ID's and 8,000 transactions are stored within each access point SRM's memory and will be retrieved once the ISC is online again.

Power requirement	12Vdc
Current consumption	60ma
Input	4 x 2 State
Outputs	3 x Open collector
Communications	RS485
Relay	Dry contact (NC/NO/COM), 1A Rating
Clock	Real Time
Memory	Flash memory <ul style="list-style-type: none">• Up to 2000 Card holders• Up to 64 time slots• Up to 8192 rolling audit logs
Operating temperature	-10°C to + 55°C (14°F to 131°F)
Relative humidity	90% max, operating non-condensing
Dimensions	65mm x 20mm x 25mm (2.56" x 0.79" x 0.98")



smax.bqtsolutions.com

Australia & Asia Pacific

Level 4
65 Epping Road
North Ryde NSW 2113 Australia
Phone: +61 (0)2 8817 2800
Fax: + 61 (0)2 8817 2811
Email: sales@bqtsolutions.com

United Kingdom & EMEA

Global House
1 Ashley Avenue, Epsom
Surrey KT 18 5AD United Kingdom
Phone: +44 (0)20 8823 9350
Fax: + 44 (0)20 8823 9001
Email: info@bqtsolutions.co.uk

America

30021 Tomas Street, Suite 300
Rancho Santa Margarita CA 92688
United States of America
Phone: +1 877 278 2637 (ext 42)
Fax: +1 877 278 2637
Email: salesusa@bqtsolutions.com

China

Suite 1602, No.75, ShengDa Garden
2518 LongHua Road, XuHui District
Shanghai, 200232 P.R.China
Phone: +86 21 5407 3638
Fax: +86 21 5407 3738
Email: china@bqtsolutions.com



smartersecuritytoday

