



Thangram

Modular entry panels

Thangram is the new line of BPT modular entry panels, the first available for the new digital IP technology system (the XiP system) and the only one capable of unparalleled colour video quality. Thangram entry panels stand out due to their innovative and attractive design, slim lines, high performance and the possibility of installing any variation starting with just 7 modules. A new generation of entry panels, perfect for satisfying your desire to surprise and astound.

- **Minimum wall-mounted thickness: only 25 mm (2mm embedded)**
- **Maximum colour video quality both day and night**
- **Seven modules, infinite combinations**
- **IP54 protection rating**

Fixing Options



Embedding box

Metal embedding frame

Product dimensions

	H (mm)	W (mm)	D (mm)
Surface mounted	254	99	25
Flush mounted	281	127	2*



(*) Embedding box depth 54.5 mm; projecting from the wall 2 mm.

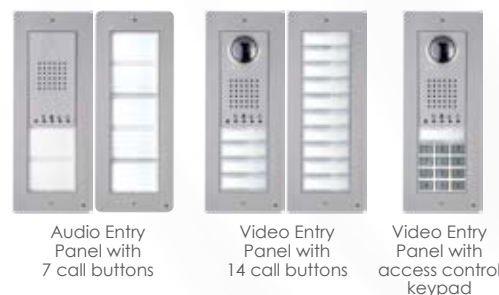
Front plate options



Audio

Video

Layout examples



Audio Entry Panel with 7 call buttons

Video Entry Panel with 14 call buttons

Video Entry Panel with access control keypad