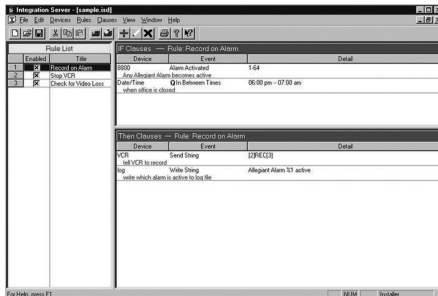




SFT-INTSRV: Integration Server Software



- ▶ **Allows communication between normally incompatible systems**
- ▶ **Various communication methods, including RS-232, digital I/O, and directly to Allegiant Server software**
- ▶ **Interfaces with all Allegiant Series Systems**
- ▶ **Can log any or all events onto a PC hard drive**
- ▶ **Integrated COM Port data viewer**

The Integration Server is a software package used to integrate multiple systems that are not ordinarily compatible. These systems can include Video Switchers, Point of Sale systems, Fire/Burglar alarms, Access Control, or HVAC systems.

Devices to be controlled can communicate 3 ways:

1. **RS-232.** Up to 16 COM ports are supported. The command codes for each device must be supplied by the manufacturer or known to the installer, and are programmed into the Integration Server. The Integration Server listens to the COM port for the specific strings of data programmed by the installer. The server can also transmit preprogrammed strings of data onto the COM port to control devices.
2. **Digital I/O.** A digital I/O card (National Instruments™ # PC-DIO-24) can be installed in the PC. This card can either control relays wired to external devices, or can monitor relays controlled by external devices.
3. **Directly to an Allegiant Switcher** via the Master Control Software (LTC 8059) or the Allegiant GUI package (LTC 8850). If the PC is running either of these in conjunction with the Integration Server, communication to the Allegiant switcher can take place without additional external wiring.

The server is programmed to recognize events as they occur on each system, based on one of the methods above, and then react to those events by sending commands to another system. Programming takes place in the form of Rules.

Rules are easy to understand clauses, written by the installer, and stored in the program. Rules can be as simple

as a single reaction to a single event. They can also be more complex, to include multiple reactions to multiple events under multiple conditions, such as time of day or a range of dates.

The Integration Server is designed with advanced features to simplify operation and configuration. An integrated COM port data viewer can be used to monitor the communication traffic coming in and going out of the PC's COM ports. This tool not only simplifies the design stage of an initial configuration, it also functions as a powerful diagnostic aid. In addition, the software supports the ability to automatically run a pre-selected configuration file upon boot-up of the PC. This feature eliminates the need for manual restarts in the event of a PC power interruption.

Technical Specifications

Recommended PC Platform

Minimum System Requirements

PC Platform with Mouse and Keyboard

- Pentium® 800 MHz CPU and SVGA monitor
- 128 MB RAM (with Windows® NT, Windows 2000®, or Windows® XP)
- 512 MB RAM (with Windows® Vista)
- 250 MB fixed drive space
- CD-ROM drive
- USB port

Operating System

- Windows NT (with service pack 6a or greater)
- Windows 2000 (service pack 4 or later)
- Windows XP Professional (service pack 2 or later)
- Windows Vista Business v6.00

PC Ports Required (Minimum)

- One (1) USB
- One (1) Serial

(Additional serial ports required if multiple systems are being controlled—up to 16 supported)

Slot Type for Optional Data I/O card

- ISA

Components

Format	Software supplied on CD-ROM. Software security provided via USB port security key.
Part Number	SFT-INTSRV
	Includes CD, user manual, USB Security Dongle, and Software License Agreement

Note: Although the SFT-INTSRV software package includes several components, only the above items are applicable to the Integration Server Software.

Windows®, Windows 2000, Windows XP, Windows Vista, and Windows NT are registered trademarks of Microsoft Corporation.

Pentium® is a registered trademark of Intel Corporation.

National Instruments™ is a trademark of National Instruments Corporation.

For more information, contact:

National Instruments Corporation:

11500 N. Mopac Expwy

Austin, TX 78759-3504

(512) 338-9119

www.ni.com

Ordering Information

SFT-INTSRV: Integration Server Software

SFT-INTSRV

Americas:
 Bosch Security Systems, Inc.
 130 Perinton Parkway
 Fairport, New York, 14450, USA
 Phone: +1 800 289 0096
 Fax: +1 585 223 9180
 security.sales@us.bosch.com
 www.boschsecurity.us

Europe, Middle East, Africa:
 Bosch Security Systems B.V.
 P.O. Box 80002
 5600 JB Eindhoven, The Netherlands
 Phone: +31 40 2577 284
 Fax: +31 40 2577 330
 emea.securitysystems@bosch.com
 www.boschsecurity.com

Asia-Pacific:
 Bosch Security Systems Pte Ltd
 38C Jalan Pemimpin
 Singapore 577180
 Phone: +65 6319 3450
 Fax: +65 6319 3499
 apr.securitysystems@bosch.com
 www.boschsecurity.com

Represented by