

TC6570PT Series Weatherproof Medium Duty Pan/Tilts

- Indoor/Outdoor Applications
- Sealed Aluminum Housing
- Adjustable Worm Gear Final Drive
- Upright or Inverted Operation
- External Limit Stops
- Pre-position Models Available



The TC6570PT Series are medium duty pan/tilts for indoor/outdoor operation. These units feature rugged high-torque AC motors, with adjustable worm gear final drives to insure long operational life, as well as drift-free operation. The TC6570PT Series are capable of auto-random scan operation when used with receiver/driver (see **Accessories**).

Construction is of aluminum, and all internal parts are corrosion protected. Finish is a textured semi-gloss beige enamel. Limit stops are externally adjustable for ease of installation. The units are completely sealed for all weather use. These units will accept housings with the total load not exceeding 18 kg (40 lb).

SPECIFICATIONS

Electrical

Model No.	Rated Motor Voltage ¹	Run A/VA	Start A/VA
TC6570PT	120 VAC, 50/60Hz	0.18/21.6	0.27/32.4
TC6570PT-PP ²	120 VAC, 50/60 Hz	0.18/21.6	0.27/32.4
TC6570PT-24	24 VAC, 50/60 Hz	0.9/21.6	1.35/32.4
TC6570PT-24PP ²	24 VAC, 50/60 Hz	0.9/21.6	1.35/32.4

1. Ratings are for each pan and tilt motor.
2. Preposition capability.

Connectors: AMP CPC type (mating connector supplied).

Motors: Two phase induction type, Instantaneous reversing.

Limit Switches:

Pan: 5 A, External adjustment.
Tilt: 5 A, External adjustment.

Conductor Requirements:

Unshielded cable with 6 or 7 conductors for left, right, up, down, motor common, and safety ground functions. No additional conductors for auto scan when used with solid-state control. TC6570PT-PP and the TC6570PT-24PP models require an additional 4 conductors.

Recommended Maximum Cable Lengths:¹

TC6570PT, TC6570PT-PP

Wire Size mm AWG	Conductors	Six		Seven	
		meters	feet	meters	feet
0.5 20		318.2	1045	633.98	2080
1 18		507.49	1665	1014.98	3330
1.5 16		804.67	2640	1610.87	5285

TC6570PT-24, TC6570PT-24PP

Wire Size mm AWG	Conductors	Six		Seven	
		meters	feet	meters	feet
0.5 20		12.19	40	25.91	85
1 18		19.81	65	41.15	135
1.5 16		33.53	110	67.06	220

1. Assumes a 10% cable loss and both motors running.
2. Using 2-wire motor common.

Mechanical

Pan Range: 0° to 355° movement in Horizontal Plane.

Pan Speed (No load condition): 6° ± 1°/s.

Pan Torque: 138.2 kg-cm (10 ft-lb) with specified voltage.

Tilt: ± 90° movement in vertical plane.

Tilt Speed (No load condition): 3° ± 0.5°/s.

Tilt Torque: 276.4 kg-cm (20 ft-lb) with specified voltage.

Maximum Load: 18 kg (40 lb) at 127 mm (5 in) from the center of mass of the camera/lens/housing assembly to the center of the tilt table.

Gearing: Adjustable worm-gear final drive to prevent drift and minimize backlash.

Bearings:

Pan: Heavy-duty ball bearings.

Tilt: Oilite bronze bushing.

Duty Cycle: 50% duty cycle: 30 minute rating.

Braking: Mechanical friction-type.

Construction: Aluminum plate; all internal parts corrosion protected.

Finish: Textured semigloss beige enamel.

Dimensions: See **Dimensional Outline**.

Weight: 9.9 kg (22 lb).

Environmental

Temperature: -23 °C to +49 °C (-10 °F to +120 °F).

Enclosure Protection: NEMA rating 3R.

Accessories

Controls:

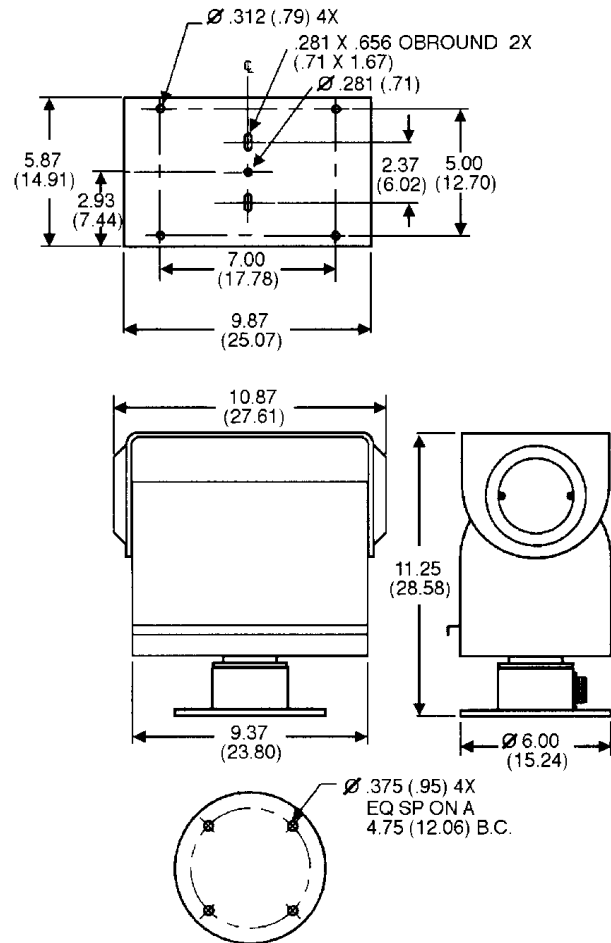
LTC 5135 Series: Desk Top pan/tilt zoom lens control.

Relay Box: For extended low voltage operation; accepts 24 VAC from Control unit to Relay Box.

Relay/Box Model No.	Pan/Tilt Model No.	Supply Voltage In	Output Voltage to P/T
RB115	TC6570PT	115 VAC	115 VAC
RB115	TC6570PT-PP	115 VAC	115 VAC
RB24	TC6570PT-24	115 VAC	24 VAC
RB24	TC6570PT-24PP	115 VAC	24 VAC
RB24-220	TC6570PT-24	220 VAC	24 VAC
RB24-220	TC6570PT-24PP	220 VAC	24 VAC

Receiver Driver: For camera site control of pan/tilt & lens. See philips LTC 8560 Series data sheets.

Column and Wall Mounts: See LTC 9214/00 Data Sheet for indoor/outdoor column and wall mounts to support these units.



Note: Values in parentheses are centimeters; all others are inches.

Dimensional Outline



PHILIPS

Let's make things better.