

# TC Series Power Supplies

- For CCD Cameras and Other Low Power Applications
- 24 VAC and 15 VDC Input Models
- Models For 120 VAC, 230 VAC, & 24 VAC Power Sources
- Isolation Transformers for 24 VAC
- Models For Single and Multiple Camera Installations
- Compact Designs



The TC Series Power Supplies are primarily designed for small compact CCD cameras. Their small size and low power requirements make them ideal for powering many other low power security products including many Allegiant® system accessories and control devices.

The TC1382 isolation transformer is recommended for installations using cameras without built-in isolation transformers. A separate power transformer should be used for each camera. If a single power transformer or other 24 VAC power source is used to power multiple cameras, the TC1382 isolation transformer is recommended between the power transformer or the 24 VAC power source and each of the cameras.

## Models:

Model No.	Rated Input	Rated Output
TC1334	120 VAC, 60 Hz	24 VAC, 60 Hz, 30 VA
TC1323	120 VAC, 60 Hz	24 VAC, 60 Hz, 10 VA
TC120PS	120 VAC, 50/60 Hz	15 VDC, 9 VA
TC220PS	220-240 VAC, 50/60 Hz	15 VDC, 9 VA
TC220PSX-24	220-240 VAC, 50/60 Hz	24 VAC, 50/60 Hz, 20 VA
TC24PS	24 to 30 VAC, 50/60 Hz	15 VDC, 9 VA
TC1382 <sup>1</sup>	24 VAC, 50/60 Hz	24 VAC, 50/60 Hz, 7 VA

1. Isolation transformer.

## SPECIFICATIONS

For 120 VAC Power Sources

### TC1334

**Rated Input:** 120 VAC, 60 Hz.

**Rated Output:** 24 VAC, 60 Hz, 30 VA.

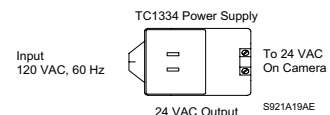
**Connectors:** Input: 2-prong/Output: 2 screw terminals.

**Construction/Finish:** Beige plastic case.

**Dimensions:** 70 W x 56.4 D x 88.9 H mm (2.75 x 2.22 x 3.5 in).

**Weight:** 0.62 kg (1.36 lb).

**Safety:** UL.



## TCI323

**Rated Input:** 120 VAC, 60 Hz.

**Rated Output:** 24 VAC, 60 Hz, 10 VA.

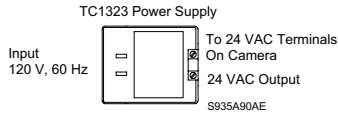
**Connectors:** Input: 2-prong/Output: 2 screw terminals.

**Construction/Finish:** Beige plastic case.

**Dimensions:** 52 W x 43 D x 62 H mm (2.0 x 1.7 x 2.4 in).

**Weight:** 0.24 kg (0.53 lb).

**Safety:** UL, CSA.



## TCI20PS

**Rated Input:** 120 VAC, 50/60 Hz.

**Rated Output:** 15 VDC, 9 VA.

**Connectors:**

Input: 2-wire cord with plug, 2 m (6.5 ft).

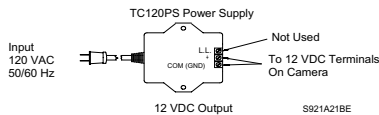
Output: Screw terminals.

**Construction/Finish:** Black plastic.

**Dimensions:** 63.5 W x 54 D x 82.6 H mm (2.5 x 2.12 x 3.25 in).

**Weight:** 0.65 kg (1.43 lb).

**Safety:** UL, CSA.



## For 230 VAC Power Sources

### TC220PS

**Rated Input:** 220-240 VAC, 50/60 Hz.

**Rated Output:** 15 VDC, 9 VA.

**Connectors:**

Input: 2-wire cord with plug, 2 m (6.5 ft).

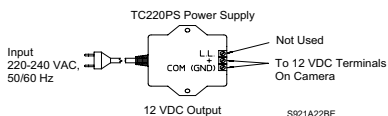
Output: Screw terminals.

**Construction/Finish:** Black plastic.

**Dimensions:** 63.5 W x 54 D x 82.6 H mm (2.5 x 2.12 x 3.25 in).

**Weight:** 0.60 kg (1.33 lb).

**Safety:** GS, CE.



### TC220PSX-24

**Rated Input:** 220-240 VAC, 50/60 Hz.

**Rated Output:** 24 VAC, 50/60 Hz, 20 VA.

## Connectors:

Input: 2-wire cord with plug, 2 m (6.5 ft).

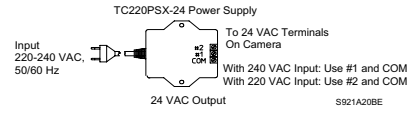
Output: Screw terminals.

**Construction/Finish:** Black plastic.

**Dimensions:** 63.5 W x 54 D x 82.6 H mm (2.5 x 2.12 x 3.25 in).

**Weight:** 0.78 kg (1.72 lb).

**Safety:** GS, CE.



## For 24 VAC Power Sources

### TC24PS

**Rated Input:** 24 VAC to 30 VAC, 50/60 Hz.

**Rated Output:** 15 VDC, 9 VA.

**Connectors:**

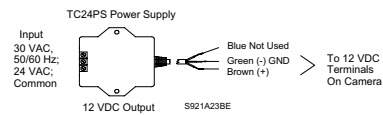
Input: Screw terminals.

Output: Wire leads, 3.6 m (12 ft).

**Construction/Finish:** Black plastic.

**Dimensions:** 63.5 W x 54 D x 82.6 H mm (2.5 x 2.12 x 3.25 in).

**Weight:** 0.73 kg (1.61 lb).



## TCI382 Isolation Transformer

**Rated Input:** 24 VAC, 50/60 Hz.

**Rated Output:** 24 VAC, 50/60 Hz, 7 VA.

**Connectors:**

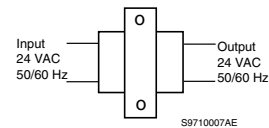
Input: Black wire leads, 203 mm (8 in).

Output: Brown wire leads, 203 mm (8 in).

**Construction/Finish:** Uncased.

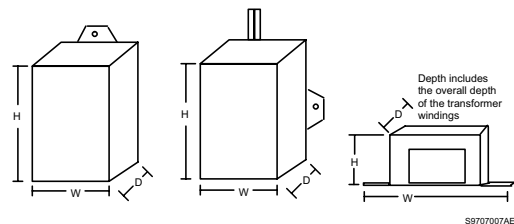
**Dimensions:** 82.6 W x 51 D x 50 H mm (3.25 x 2 x 1.95 in).

**Weight:** 0.45 kg (1 lb).



## Dimension Codes

Note: The dimensions specified are approximate and relate to the general diagrams shown below.



# PHILIPS

Let's make things better.