

# NetServer-I

## Single Channel Video Network Server

- **Single Channel Video Server for PAL and NTSC**
- **AutoDome™ support with 64 preset shots**
- **Wavelet Compression**
- **TCP/IP Protocols for Communication on Intranets and the Internet**
- **10BaseT Ethernet Port**
- **External Modem**
- **Internal HTML Pages for Viewing and Administration**
- **Video Motion Detection and 4 Alarm Contacts**



The NetServer-I is a self-contained network video server for one video input. The unit comprises a high-resolution video encoder, wavelet video compression, video motion detection and a network server for up to 100 simultaneous video streams. The built in web pages allow the display of realtime images and control of AutoDome™ cameras. Web pages are available for connection through a Firewall (server push viewer) and for non-Windows computers (Java Viewer).

The network interface is compliant with 10BaseT Ethernet and supports the TCP/IP set of communication protocols allowing communication on private networks, Intranets and the Internet. With an optional external modem, NetServer-I can communicate over public telephone lines.

Both the software video motion detector and the contact closure inputs can trigger alarms. Once an alarm is generated the unit will send alarm pictures to a predefined e-mail address or upload the pictures to a file on a network server, using FTP.

The NetServer has serial outputs that can be used to control of AutoDome units and for connection of an external PSTN modem.

Security options include password access protection, IP address filtering and image encryption.

A PC with standard Internet Explorer or Netscape browser is used for viewing of the network video images.

The image update rate, resolution and size are all adjustable from the remote viewing location.

To enhance the image update rate, a quality box can be defined for the area of interest. This part of the image is transmitted at the selected quality, while the remainder is transmitted at reduced quality.

# SPECIFICATIONS

## ELECTRICAL

Model No.	Nominal voltage/power	Color system
LTC 0201/91	12VDC or 24VAC; 5 W	NTSC/PAL
NetSvr-1	12VDC or 24VAC; 5 W	NTSC/PAL

## Video specification:

### Video inputs:

- 1 input on BNC (Loop through)
- 1 Vpp, selectable 75 Ohms or high impedance

## Network:

**Processor:** 32 bit RISC Processor

**Flash memory:** 8 MB

**RAM:** 16 MB

**Operating System:** Embedded Linux

**Network protocols:** TPC/IP, HTTP, ARP, RARP, ICMP, DHCP, FTP, SMTP, PPP, PPPoE.

**Network Port:** 10Base-T Ethernet

### Operating system:

Windows 98/ME/NT/2000/XP

### Recommended Browsers:

MS Internet Explorer Ver 5.0 or later  
Netscape Ver 4.7 or later  
for non-Windows computers a Java applet viewer is present running on the Java Virtual Machine.

### Image Resolution:

720X486 (interlaced), 720X243, 360X243, 180X121, 90X60

### Image Compression:

Compression: Wavelet, Progressive mode  
Compression Ratio: 20:1 ~300:1  
Frame Rate: Max 30fps (NTSC) or 25fps (PAL).

### Performance:

Transfer Rate (server): Max 120fps,  
Decoding Rate (client): 2~30fps,  
Max number of clients/streams: 100  
Max number of server push clients: 5

### Management and Software Update:

Remote system-configuration  
Flash memory allows new version software updates through the local LAN network

### Security:

Passwords and IDs for administrator and 5 users  
IP Address Filtering  
Image encryption

### Alarms Inputs:

Motion detection (Activity detection)  
4 opto-coupler alarm inputs, 5 to 12VDC, 10 to 20mA  
Automatic alarm image transfer by e-mail and FTP.

## Miscellaneous functions:

High quality image area setting  
Image quality control (10 levels of compression)  
Periodical image transfers through e-mail or uploads to a server using FTP  
Grey/Progressive/Single-shot Mode

## Serial ports:

2 x RS-232 for Pan/Tilt/Zoom Control and PSTN modem.  
RS-485 for Pan/Tilt/Zoom Control.

## External power supply:

Input voltage rating: 100 – 240 VAC  
Output: 12VDC/1.5A  
Power supply unit included

## MECHANICAL

### Connectors:

- 2 x BNC, video inputs, Loop through.
- RJ-45 Ethernet.
- 9-pole terminal block for 2 x RS232 and RS485
- 8-pole terminal block for 4 Sensor inputs
- 3-pin terminal block for 12VDC and 24VAC inputs

**Dimensions:** 33 x 120 x 132 mm (HxWxD\*)

\*including connectors

Feet (detachable) add 5 mm to the height

**Weight:** 0.4 kg

## ENVIRONMENTAL

### Temperature range:

Operating: -10 to 50°C (14 to 122°F)  
Storage: -40 to 70°C (-40 to 158°F)

**Operating Humidity:** 5% to 93% non-condensing

**Shock:** 30 G

**Vibration:** 1.2 G

### Electro Magnetic Compatibility:

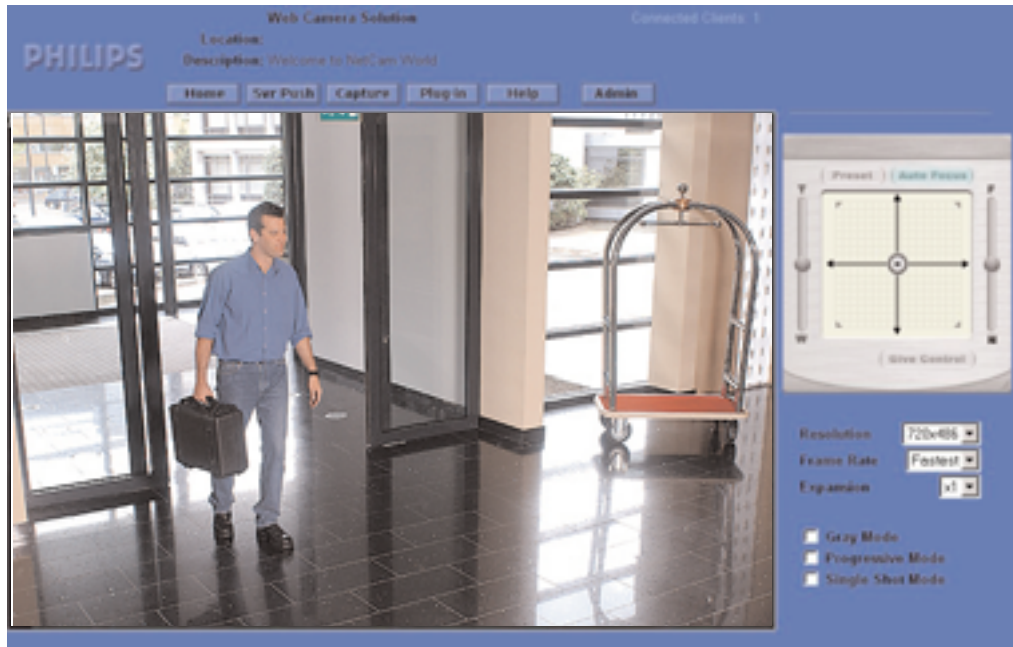
Emission: EN 50081-1 Class B  
FCC Ch 15 Class B

**Immunity:** EN 50082

**Certification:** CE, FCC, UL, cUL and C-tick

### Delivered accessories:

Set-up software  
Cross-wire network cable  
Power supply unit



Single-view Page



Multi-view Page



Front Connectors



Rear Connectors



**PHILIPS**

*Let's make things better.*