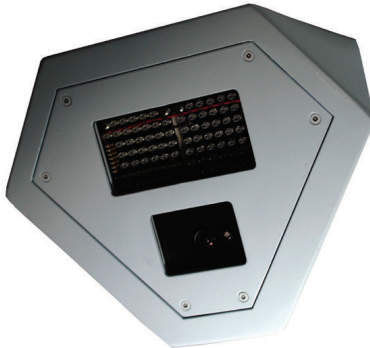




EX36-IP No-Grip Corner Mount Camera



- ▶ **Intelligent Video Analysis (IVA)**
- ▶ **No-Grip Design**
- ▶ **High Performance Video Encoder**
- ▶ **Covert Active-Infrared Illumination**

The EX36-IP is a No-Grip corner mount camera featuring a powerful processor for Intelligent Video Analysis (IVA) and IP Infrared Imaging design for 24/7 effective networked surveillance in high risk, vandal-prone applications.

The EX36-IP uses a No-Grip anchor-free design which enables it to view the entirety of a small room, including the floor beneath the camera, under any ambient lighting conditions, even in completely dark rooms. The camera is impossible to grip or hang from, providing maximum safety for applications such as prison cells, elevators and psychiatric hospitals.

The EX36-IP harnesses the power of infrared illumination to deliver outstanding images day or night, integrating seamlessly with existing IP network infrastructure. The EX36-IP provides outstanding day and night imaging performance with lower bandwidth network impact than standard IP cameras.

Functions

Applications

- Prison cells
- Hospital recovery rooms
- Psychiatric care rooms
- Vandal-prone areas
- Indoor CCTV

Technical Specifications

Video

Sensor	MX4 Hi-resolution day/ night CCD	C7 Hi-resolution Color CCD
Effective Pixels (NTSC)	768 (H) x 494 (V)	768(H) x 494(V)
Effective Pixels (PAL)	752 (H) x 582 (V)	752(H) x 582(V)
Resolution	540 TVL color / 540 TVL monochrome	500 TVL
S/N Ratio	Greater than 48dB	Greater than 48dB
Daytime Sensitivity	0.02 Lux with F1.4 lens	2.7 Lux at F1.4
Night-time Sensitivity	0 Lux - operates in total darkness	2.7 Lux at F1.4
Lens Options	Fixed: 2.5 mm and 3.6 mm	Fixed: 2.5 mm and 3.6 mm
Gamma	0.45	0.45
Video Output	1 Vpp, 75 ohms	1 Vpp, 75 ohms
Day-Night Switching	Photocell-controlled, automatic	N/A

Infrared Illumination

Photocell	Automatic, sensitivity adjustable	N/A
LEDs	84 LEDs, Infrared, intensity adjustable	None - No IR window
Wavelength	940 nm covert or 850 nm semi-covert	N/A
Night Vision Distance	9 m (30 ft)	N/A

Interfaces

Ethernet	10/100 Base-T RJ45
Analog	PAL or NTSC BNC

IP

Protocols	Telnet, RTP, HTTP(S), ARP, TCP, UDP, IP, ICMP, DHCP, IGMPv2/v3, SNMP, 802.1x
Compression	MPEG-4 SP and MJPEG, up to 30 frames per second, tri-stream selectable
Frame Rate	1-30 FPS programmable (full motion)
Bandwidth	Configurable from 9.6 Kbps to 6 Mbps

Resolution and Frame Rates

	PAL	NTSC
4CIF: 25/30 IPS	704 x 576	704 x 480
2CIF: 25/30 IPS	704 x 288	704 x 240
half D1: 25/30 IPS	352 x 576	352 x 480
CIF: 25/30 IPS	352 x 288	352 x 240
QCIF: 25/30 IPS	176 x 144	176 x 120

Mechanical

Weight	1.2 kg (2.6 lbs)
Construction	Robust aluminum casting, painted steel with flush removable front panel and tamper-resistant screws
Window	¼-inch thick LEXAN
Overall Dimensions (WxHxD)	224 x 134 x 155 mm (8.8 x 5.3 x 6.1 in)

Environmental

Operational Range	-50°C to +50°C (58°F to 122°F)
-------------------	--------------------------------

Electrical

Voltage Supply	12 VDC / 24 VAC
Power Consumption	900 mA at 12 VDC max

Ordering Information

NEC-360F02-21W IP Corner Mount Camera IP vandal proof corner cam, 1/3 in. hi-res color, 500 TVL, 2.5 mm lens, NTSC	NEC-360F02-21W
NEC-360F02-11W IP Corner Mount Camera IP vandal proof corner cam, 1/3 in. hi-res color, 500 TVL, 2.5 mm lens, PAL	NEC-360F02-11W
NEC-360F04-21W IP Corner Mount Camera IP vandal proof corner cam, 1/3 in. hi-res color, 500 TVL, 3.6 mm lens, NTSC	NEC-360F04-21W
NEC-360F04-11W IP Corner Mount Camera IP vandal proof corner cam, 1/3 in. hi-res color, 500 TVL, 3.6 mm lens, PAL	NEC-360F04-11W
NEI-368F02-21W IP Corner Mount Camera IP vandal proof corner cam, 1/3 in. extended day/night, 540/540 TVL, 850 nm IR, 2.5 mm lens, NTSC	NEI-368F02-21W
NEI-368F02-11W IP Corner Mount Camera IP vandal proof corner cam, 1/3 in. extended day/night, 540/540 TVL, 850 nm IR, 2.5 mm lens, PAL	NEI-368F02-11W
NEI-368F04-21W IP Corner Mount Camera IP vandal proof corner cam, 1/3 in. extended day/night, 540/540 TVL, 850 nm IR, 3.6 mm lens, NTSC	NEI-368F04-21W
NEI-368F04-11W IP Corner Mount Camera IP vandal proof corner cam, 1/3 in. extended day/night, 540/540 TVL, 850 nm IR, 3.6 mm lens, PAL	NEI-368F04-11W
NEI-369F02-21W IP Corner Mount Camera IP vandal proof corner cam, 1/3 in. extended day/night, 540/540 TVL, 940 nm IR, 2.5 mm lens, NTSC	NEI-369F02-21W
NEI-369F02-11W IP Corner Mount Camera IP vandal proof corner cam, 1/3 in. extended day/night, 540/540 TVL, 940 nm IR, 2.5 mm lens, PAL	NEI-369F02-11W
NEI-369F04-21W IP Corner Mount Camera IP vandal proof corner cam, 1/3 in. extended day/night, 540/540 TVL, 940 nm IR, 3.6 mm lens, NTSC	NEI-369F04-21W
NEI-369F04-11W IP Corner Mount Camera IP vandal proof corner cam, 1/3 in. extended day/night, 540/540 TVL, 940 nm IR, 3.6 mm lens, PAL	NEI-369F04-11W
Accessories	
EXPS.008 VAC Power Supply Power supply 120 VAC / 24 VAC 1500 mA	EXPS.008
PSU-230-24 Power Supply Power Supply, 230 VAC / 24 VAC, 50 W	PSU230-24
EX36RWC Replacement window EX36 Replacement Polycarbonate window, camera	EX36RWC
EX36RWL Replacement window EX36 Replacement Polycarbonate window, IR	EX36RWL

Ordering Information

Software Options

NEA-IP200B-FS3

Extreme-Series IVA 3.0 VCA software license

NEA-IP200B-FS3

Americas:
Bosch Security Systems, Inc.
130 Perinton Parkway
Fairport, New York, 14450, USA
Phone: +1 800 289 0096
Fax: +1 585 223 9180
security.sales@us.bosch.com
www.boschsecurity.us

Europe, Middle East, Africa:
Bosch Security Systems B.V.
P.O. Box 80002
5600 JB Eindhoven, The Netherlands
Phone: + 31 40 2577 284
Fax: +31 40 2577 330
emea.securitysystems@bosch.com
www.boschsecurity.com

Asia-Pacific:
Robert Bosch (SEA) Pte Ltd, Security Systems
38C Jalan Pemimpin
Singapore 577180
Phone: +65 6319 3453
Fax: +65 6319 3499
apr.securitysystems@bosch.com
www.boschsecurity.com

Represented by