

MIC Series 412TI Thermal Camera

www.boschsecurity.com



- ▶ Dual thermal/optical operation
- ▶ Brushless motor technology
- ▶ Robust design
- ▶ Integrated wiper unit
- ▶ Host of mounting and viewing options

The MIC Series 412 thermal camera has been designed to offer an extremely reliable, robust, and high quality surveillance solution for security applications that demand the very best performance. Precision engineered to exacting standards, the device offers the most ruggedized dual optical/thermal image capture solution available on the market today.

Containing both a high quality optical day/night camera module and a thermal imaging module that sit side-by-side within the housing, the compact MIC Series 412 thermal camera switches between a high resolution optical camera and a high performance thermal camera at the press of a button on the control keyboard.

A 36x day/night camera is paired with the latest 50 mm un-cooled thermal imager to provide a range of enhanced viewing options, such as spectral heat variance, and hot and cold spot highlights. The thermal imager has built-in sun protection that allows the camera to self-heal should it be pointed directly at the sun. Brushless motor technology ensures ultra-reliable, whisper-quiet operation while groundbreaking resolver technology provides pinpoint accuracy, affording the user full 360° continuous rotation pan and 260° tilt control.

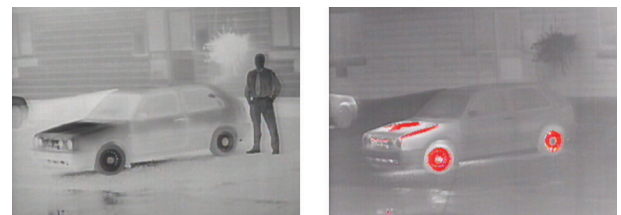
The MIC Series 412 thermal camera is compatible with all MIC Series connection cables, brackets, control equipment, and non-IR power supply units for ease of installation, integration, and operation.

System Overview

Examples of optical and thermal modes



Optical image / Thermal image in white hot spot mode



Thermal image in black hot spot mode / Thermal image in ice and fire mode



Thermal image in glow bow mode / Thermal image in iron bow mode

Functions

Separate optical and thermal cameras

Switch between optical camera and thermal imager at the press of a single button.

Brushless motor technology

Whisper-quiet operation and smooth control is provided through use of ultra-reliable brushless motors.

Robust design

Machined from solid aluminum, the MIC Series 412 thermal camera ensures corrosion protection by using two different processes; first an Alocrom 1200 coating, then a robust, powder paint coating. Alocrom 1200 is a chromate conversion coating of aluminum, used in the aerospace and defense industries where a protective layer is required to improve corrosion resistance. Sealed with 'O'-rings, the device can operate submerged up to 1 meter (3.3 feet) underwater by virtue of its design and construction.



Notice

The thermal camera will show no detail if submerged.

Integrated long-life silicone wiper and heater

Thanks to its integrated wiper and heater, the MIC Series 412 thermal camera is able to capture the highest possible quality image all year round, regardless of the weather.

Host of mounting and viewing options

Faultless operation, either upright or inverted, gives the user a host of mounting and viewing possibilities

Easy to use

Provides the same easy to use functionality of all MIC series cameras, including the same connection cables, brackets, control equipment, and non-IR power supply units.

Certifications and Approvals

Electromagnetic Compatibility (EMC)	Complies with FCC part 15, ICES-003, and CE regulations including EN50130-4, EN61000-3-2:2006, EN61000-3-3:1995, and EN55022:2006 inc AL:2007
Safety	Complies with CE regulations, UL, EN, and IEC standards 60950-1 & 22
Weatherproofing	IP68 (1m submersion for 24 hrs)

Technical Specifications

Camera Module (optical)

Image sensor	1/4-inch EXview CCD
Horizontal resolution	(WDR) 36x module, 530 TVL NTSC/PAL typical
Filter	Automatic mechanical IR cut filter
Focus system	Auto or manual
Iris	Auto or manual with slow shutter integration modes
Synchronization	Internal / External (V-Lock)
Signal-to-Noise ratio (SNR)	50 dB or more
Back Light Compensation (BLC)	On/Off
White balance	Automatic
Automatic Gain Control (AGC)	-3 to -28 dB, 2 dB steps
Aperture control	16 Steps

36x optical zoom module

Lens	F=3.4 mm (WIDE) to 122.4 mm (TELE), F1.6 to F4.5
Zoom	36x optical (12x digital)
Angle of view	57.8° (WIDE end) to 1.7° (TELE end)
Minimum illumination	1.4 lux (1/60 s NTSC, 1/50 s PAL, typical, F1.6, 50IRE) 0.1 lux (1/4 s NTSC, 1/3 s PAL, typical, F1.6, 50IRE) ICR-ON mode: 0.01 lux (1/4 s NTSC, 1/3 s PAL)
Shutter speed	1/4 to 1/10,000s (20 steps) NTSC, 1/3 to 1/10,000s (20 steps) PAL

Camera Module (thermal)

Lens	50 mm
Image sensor	Focal Plane Array (FPA), un-cooled Vanadium Oxide microbolometer 7.5 Hz NTSC, 8.3 Hz PAL
Picture elements	324(H) x 256(V)
Spatial resolution	0.760 mrad with 50 mm lens
Field of view	14°(H) x 11°(V) with 50 mm lens
Focus	Factory-set at infinity focus
Spectral response	7.5 to 13.5 μm
Thermal sensitivity	<85 mK at F1.6
Electronic zoom	2X
Features	White hot, black hot, and false color modes

Performance Range	Human 1.8 x 0.5 m (5.9 x 1.6 ft)	Object 2.3 x 2.3 m (7.5 x 7.5 ft)
Detection	780 m (2559 ft)	2.2 km (2200 m) (7218 ft)
Recognition	200 m (656 ft)	590 m (1,936 ft)

Operational

E-flip	Yes, E-flip enables the optical camera to invert the image
Manual flip	Yes
Presets	64 telemetry presets accurate to less than 0.1°utilising resolver technology (using FV protocol, 10 camera set-up presets to allow ANPR, color correction etc.)
Preset tours	6 tours each with up to 32 presets
Sector titles	Yes (64 sectors) 20 characters per title
Preset titles	20 character caption for each of the 64 presets
Home position	Yes (preset 1 or tour)

Communication and Protocols

Communication	RS485 / RS422
Control protocol	Bosch or FV protocol cameras available; additional protocols supported are Pelco D, Kalatel, Panasonic, and VCL. These can be loaded using the MIC-USB485CVTR signal converter and Cam-set via a PC. Biphase control requires a Biphase to RS485 converter (MIC-BP4, available separately) installed in the MIC Series PSU to connect to Biphase equipment.

Connectivity

Video	Single co-axial via composite cable (optical/thermal cameras, user switchable)
Telemetry	Twisted pair; Simplex, half and full duplex operation via composite cable
MIC Universal Camera Setup Software Utility (Camset)	Supplied with each camera, Cam-set allows direct connection to a USB-equipped PC via the MIC Series PSU over a full duplex or IP network to provide access to all camera functions and useful diagnostic tools
USB to RS485 signal converter	Allows MIC Series cameras to connect to a PC (supplied free with camera, or available separately)
Power	Via composite cable

Alarms

Alarm inputs	1 tamper input (additional inputs possible with optional alarm card in MIC Series PSU)
Alarm communication	Tamper switch (ground connection)

Mechanical

Drive unit	Brushless integral pan/tilt motor drive
Pan angle	360° continuous rotation
Pan speed	Up to 72° per second (variable)
Tilt angle	260°
Tilt speed	0.2° to 90° per second (variable)
Speed control	Closed loop electronics
Preset accuracy	±0.30° (typical)
Proportional Pan/Tilt to Zoom	Yes

Electrical

Input voltage (dual source)	18VAC, +/-10%, 50/60 Hz
Input current	Camera: 2 A Heater: 1 A

Environmental

Operating temperature	-40 °C to +50 °C (-40 °F to +122 °F)
Weatherproofing	IP68 (1m submersion for 24 hrs)
MTBF	53,817 hours

Construction

Dimensions (W x H x D)	267 x 445 x 200 mm (10.51 x 17.52 x 7.87 in.)
Weight	9.5 kg (20.94 lb) (including 4-in. PCD base)
Viewing window	Tempered flat glass (optical) and germanium covering (thermal)
Construction material	Machined aluminum
Standard colors	Black(RAL9005), Grey (RAL7001), or White (RAL9003)
Standard finish	Alocrom 1200 surface treatment with powder coat paint
Window wiper	Standard, long-life silicone wiper
Heater	Standard
Configurations available	Upright mount or inverted (Inverted mount is possible using software setting and upright camera.)

Ordering Information

MIC412TIBUP13636N 9Hz, 36X NTSC Thermal Camera, Black
9 Hz Thermal, 36X, NTSC, PTZ camera, Black, Bosch Protocol with integrated wiper and heater
Order number **MIC412TIBUP13636N**

MIC412TIGUP13636N 9Hz, 36X NTSC Thermal Camera, Grey

9 Hz Thermal 36X, NTSC, PTZ camera, Grey, Bosch Protocol with integrated wiper and heater
Order number **MIC412TIGUP13636N**

MIC412TIWUP13636N 9Hz, 36X NTSC Thermal Camera, White

9 Hz Thermal 36X, NTSC, PTZ camera, White, Bosch Protocol with integrated wiper and heater
Order number **MIC412TIWUP13636N**

MIC412TIBUW13636P 9Hz, 36X PAL Thermal Camera, Black

9 Hz Thermal, 36X, PAL, PTZ camera, Black, FV Protocol with integrated wiper and heater
Order number **MIC412TIBUW13636P**

MIC412TIGUW13636P 9Hz, 36X PAL Thermal Camera, Grey

9 Hz Thermal 36X, PAL, PTZ camera, Grey, FV Protocol with integrated wiper and heater
Order number **MIC412TIGUW13636P**

MIC412TIWUW13636P 9Hz, 36X PAL Thermal Camera, White

9 Hz Thermal 36X, PAL, PTZ camera, White, FV Protocol with integrated wiper and heater
Order number **MIC412TIWUW13636P**

Accessories**MIC-24PSU-UL 24 VAC Camera Power Supply**

24 VAC, 50/60 Hz power supply for MIC Series cameras
Order number **MIC-24PSU-UL**

MIC-115PSU-UL 115 VAC Camera Power Supply

115 VAC, 60 Hz power supply for MIC Series cameras
Order number **MIC-115PSU-UL**

MIC-240PSU-UL 240 VAC Camera Power Supply

240 VAC, 50 Hz power supply for MIC Series cameras
Order number **MIC-240PSU-UL**

MIC-ALM Alarm and Washer Pump Drive Card

8 Input alarm and washer pump drive card for PSU (Not for IR PSU)
Order number **MIC-ALM**

MIC-BP4 Biphase Converter

Biphase converter for non-IR versions of MIC series power supply units
Order number **MIC-BP4**

MIC-DCA-B Deep Conduit Adapter, Black

Deep conduit adapter for 4 in. PCD base - black leatherette finish, RAL9005
Order number **MIC-DCA-B**

MIC-DCA-G Deep Conduit Adapter, Grey

Deep conduit adapter for 4 in. PCD base - grey leatherette finish, RAL9010
Order number **MIC-DCA-G**

MIC-DCA-W Deep Conduit Adapter, White

Deep conduit adapter for 4 in. PCD base - white leatherette finish RAL9003
Order number **MIC-DCA-W**

MIC-SCA-G Shallow Conduit Adapter, Grey

Shallow conduit adapter for 4 in. PCD base - grey, leatherette finish, RAL7001
Order number **MIC-SCA-G**

MIC-SCA-B Shallow Conduit Adapter, Black

Shallow conduit adapter for 4 in. PCD base - black, leatherette finish, RAL9005
Order number **MIC-SCA-B**

MIC-SCA-W Shallow Conduit Adapter, White

Shallow conduit adapter for 4 in. PCD base - white, leatherette finish, RAL9003
Order number **MIC-SCA-W**

MIC-SPR Spreader Plate

Aluminum spreader plate suitable for brickwork surface mounting – black leatherette finish RAL9005
Order number **MIC-SPR**

MIC-SPR-G Spreader Plate, Grey

Aluminum spreader plate suitable for brickwork surface mounting, grey leatherette finish (RAL7001)
Order number **MIC-SPR-G**

MIC-SPR-W Spreader Plate, White

Aluminum spreader plate suitable for brickwork surface mounting, white leatherette finish (RAL9003)
Order number **MIC-SPR-W**

MIC-CMB-B Corner Mount Bracket, Black

Corner mount bracket, black leatherette finish (RAL9005)
Order number **MIC-CMB-B**

MIC-CMB-G Corner Mount Bracket, Grey

Corner mount bracket, grey leatherette finish (RAL7001)
Order number **MIC-CMB-G**

MIC-CMB-W Corner Mount Bracket, White

Corner mount bracket, white leatherette finish (RAL9003)
Order number **MIC-CMB-W**

MIC-PMB Pole Mount Bracket

Pole mount bracket (includes 2 x 455 mm stainless steel banding straps for pole diameters 75 to 145 mm)
Order number **MIC-PMB**

MIC-WMB-B Wall Mount Bracket, Black

Wall mount bracket, black leatherette finish (RAL9005)
Order number **MIC-WMB-B**

MIC-WMB-G Wall Mount Bracket, Grey

Wall mount bracket, grey leatherette finish (RAL7001)
Order number **MIC-WMB-G**

MIC-WMB-W Wall Mount Bracket, White

Wall mount bracket, white leatherette finish
(RAL9003)

Order number **MIC-WMB-W**

MICUSB485CVTR2 USB to RS485 Signal Converter

USB to RS485 signal converter to allow MIC Series cameras to connect to a PC, supplied with each camera

Order number **MICUSB485CVTR2**

MIC-WKT Washer Kit

Washer kit for non infrared MIC models (includes washer pump drive card, washer nozzle and mounting brackets for wall and 4 in. PCD base)

Order number **MIC-WKT**

UPA-2450-50 Power Supply, 220 V, 50 Hz

220 VAC, 50 Hz, 24 VAC, 50 VA Out
For use with certain 24 VAC camera models.

Order number **UPA-2450-50**

UPA-2450-60 Power Supply, 120 V, 60 Hz

120 VAC, 60 Hz, 24 VAC, 50 VA Out

Order number **UPA-2450-60**

MIC-2M-S 2 m Shielded Composite Cable

Shielded Composite 2 m cable that provides power, telemetry and video connection from a MIC Series camera to a MIC Series power supply

Order number **MIC-2M-S**

MIC-10M-S 10 m Shielded Composite Cable

Shielded Composite 10 m cable that provides power, telemetry and video connection from a MIC Series camera to a MIC Series power supply

Order number **MIC-10M-S**

MIC-20M-S 20 m Shielded Composite Cable

Shielded Composite 20 m cable that provides power, telemetry and video connection from a MIC Series camera to a MIC Series power supply

Order number **MIC-20M-S**

MIC-25M-S 25 m Shielded Composite Cable

Shielded Composite 25 m cable that provides power, telemetry and video connection from a MIC Series camera to a MIC Series power supply

Order number **MIC-25M-S**

HAC-WAS05-20 24 VAC Washer

24 VAC washer inst. 4M 25L

Order number **HAC-WAS05-20**

HAC-WAS05-50 230 VAC Washer

230 VAC washer inst. 4M 25L

Order number **HAC-WAS05-50**

HAC-WAS30-50 230 VAC Washer

230 VAC washer inst. 30M 25L

Order number **HAC-WAS30-50**

Represented by:

Americas:

Bosch Security Systems, Inc.
130 Perinton Parkway
Fairport, New York, 14450, USA
Phone: +1 800 289 0096
Fax: +1 585 223 9180
security.sales@us.bosch.com
www.boschsecurity.us

Europe, Middle East, Africa:

Bosch Security Systems B.V.
P.O. Box 80002
5600 JB Eindhoven, The Netherlands
Phone: + 31 40 2577 284
Fax: +31 40 2577 330
emea.securitysystems@bosch.com
www.boschsecurity.com

Asia-Pacific:

Robert Bosch (SEA) Pte Ltd, Security Systems
11 Bishan Street 21
Singapore 573943
Phone: +65 6258 5511
Fax: +65 6571 2698
apr.securitysystems@bosch.com
www.boschsecurity.asia