

# NetCam-4 Series Digital Network Cameras

- 1/3-inch Format CCD color camera
- Up to 720x486 resolution
- Wavelet compression
- TCP/IP protocols for communication on intranets and the internet
- 10BaseT Ethernet output
- Integrated server for 3 additional cameras
- Internal HTML pages for viewing and administration
- Real time viewing in single or quad display
- Video motion detection and alarm contacts



Philips introduces the NetCam-4 series of self-contained network cameras that comprise a high-resolution color camera, wavelet video compression, video motion detection and a network server for up to 100 simultaneous video streams. The NetCam-4 has inputs for three additional standard analog color cameras. Acting as a server for these additional cameras, the NetCam-4 will transmit the images of the 4 channels individually or in quad mode.

The network interface is compliant with 10baseT Ethernet and supports the TCP/IP set of communication protocols allowing communication on private networks, Intranets and the Internet.

Alarms can be triggered by the software video motion detector, or the 2 contact closure inputs. Once an alarm is generated, the camera will send alarm pictures to a predefined email address or upload the pictures to a file on a network server using FTP. The alarm also triggers an

internal relay which can be used for switching external devices via the connections on the back of the camera.

The cameras have outputs for a video iris lens and serial outputs for control of Pan and Tilt units and Zoom lenses.

Security options include password access protection, IP address filtering and image encryption.

A PC with standard Internet Explorer or Netscape browser is used for viewing of the network camera images.

The user control functions enable the selection of individual images or a quad screen. The picture update rate, image resolution and image size are adjustable from the viewing location.

In order to enhance the picture update rate, a quality box can be defined for the area of interest. This part of the picture is transmitted at the selected picture quality, while the remainder of the picture is transmitted at reduced quality.

# SPECIFICATIONS

## ELECTRICAL

Model No.	Nominal voltage/power	Color system
NetCam-4 NTSC	12Vdc/8 W	NTSC
LTC 0204/10	12Vdc/8 W	PAL

### Internal camera and video specification:

**Imager:** Interline transfer CCD 1/3-inch image format.

### Active Picture Elements:

NTSC Models: 768 H x 492 V.

PAL B Models: 752 H x 582 V.

### Sensitivity: 3 lux (0.3 fc)

1) for f/1.2 lens, 89% scene reflectance

**Horizontal Resolution:** 460 TVL.

### Signal-to-Noise:

46 dB.(Unified weighting filter per CCIR Recommendation 567).

**AGC:** 18 dB.

**Shutter speeds:** Automatic; up to 1/100,000 sec.

**White Balance:** Auto tracking; 2500 K to 8,000 K.

**Contouring:** Horizontal and vertical symmetric,

**Gamma:** 0.45

**Video output:** Output 1 on a BNC; 1 Vpp into 75 ohms.

### Video inputs:

Input 1, selected by switch (int/ext) on BNC 1

Input 2 – 4, on BNC 2 – 4:

1 Vpp, selectable 75Ω or high impedance

### Lens:

CS-mount.

**Video-iris:** 12 Vdc 40 mA max.

**Video level:** 1.0 Vpp

### Network

32bit RISC Embedded Processor

**Flash memory:** 8MB

**RAM:** 16MB

**Operating System:** Embedded Linux

**Video Channel (Input / Output):**

4 inputs, one internal camera one control output.  
Selection internal/external camera and terminating/non-terminating inputs

**Network protocols:** TPC/IP, HTTP, ARP, RARP, ICMP, DHCP, FTP, SMTP

**Network Line:** 10 base-T Ethernet LAN

### Compatible Browsers:

MS internet Explorer Ver 4.0 or later

Netscape Ver 4.5 or later

Java applet

**Operating system:** Windows 98/NT4 (Winsock2 required)

**Image Resolution:** 720X486, 720X243, 360X243, 180X121, 90X60

### Image Compression:

Compression: Wavelet, Progressive mode

Compression Ratio: 10:1 ~200:1 (typical 30:1)

**Frame Rate:** Max 30 frame/sec

### Performance:

Transfer Rate: Max 120fps,

Decoding Rate: 2~15fps,

### Management and Software Update:

Remote system-configuration

Flash memory allows new version software updates through TCP/IP network

### Security:

Password protection

IP Address Filtering

### Alarms and I/O:

Motion detection (Activity detection)

Automatic e-mail and file transfer

Software-controlled relay output & 2 alarm inputs

### Miscellaneous functions:

High quality image area setting

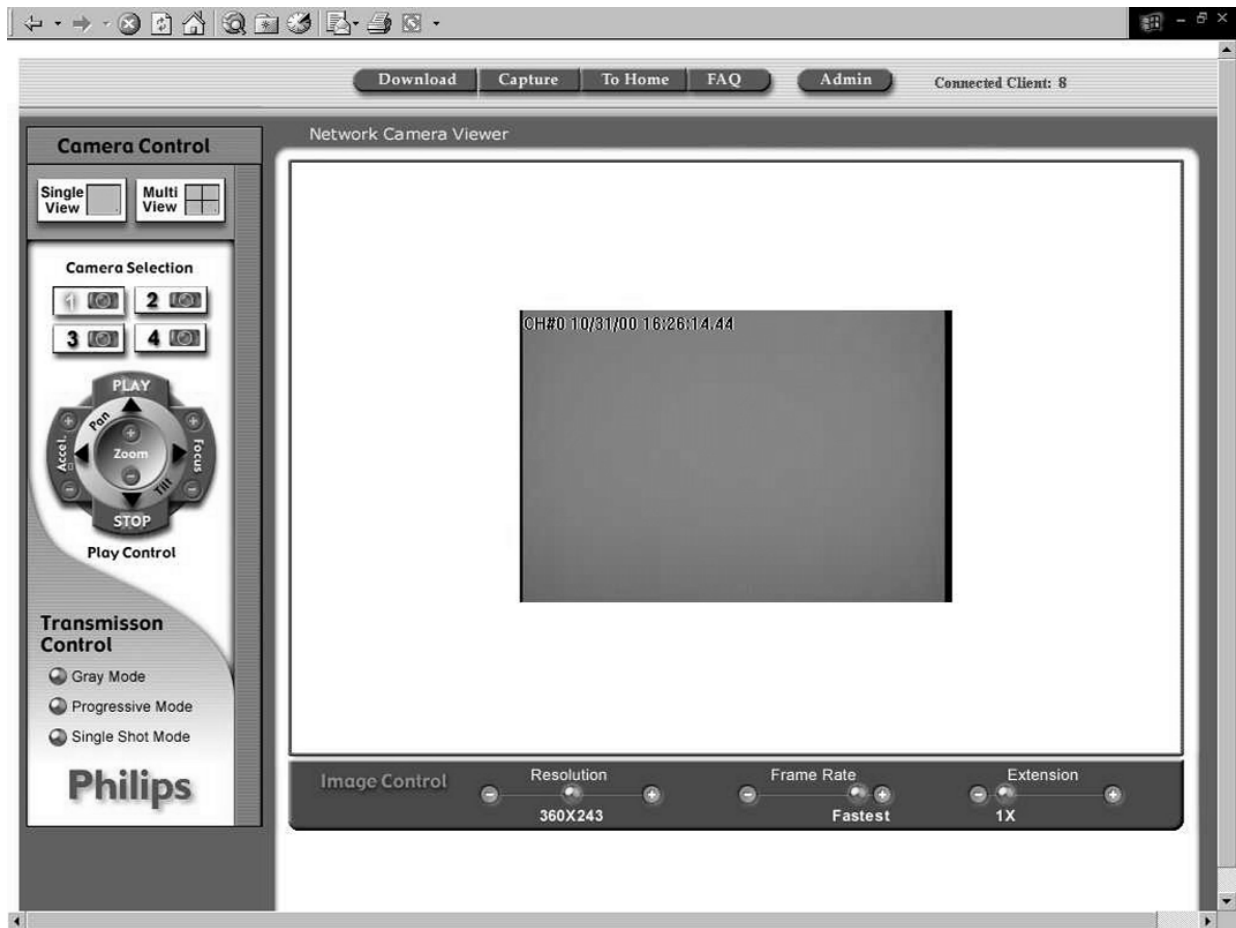
Image quality control (10 levels of compression)

Periodical image transfers through E-mail and uploads to a server using FTP

Grey/Progressive/Single-shot Mode

**Pan/Tilt/Zoom Control:** RS-232 or RS-485 (DB-15 connector)

**External power supply:** 12Vdc/1A; 100 – 240Vac; Power supply unit included



**NetCam-4 Home Page**

**MECHANICAL**

**Connectors:**

- 4x BNC, video.
- RJ-45 Ethernet.
- General Interface. 15-pin D-Sub connector
- RS232
- RS485
- Video iris
- Input-Output Interface.
- Power 5mm circular, center positive

**Camera mounting:** Top and Bottom; 1/4" 20 UNC

**Lens mounting:** C and CS

**Dimensions:** 75 x 105 x 200 mm (HxWxD\*)  
 \*including connectors

**Weight:** 0.8 kg

**ENVIRONMENTAL**

**Camera:**

**Temperature range:**

- Operating: -5 to 45°C (23 to 113°F)
- Storage: -40 to 70°C (-40 to 158°F)

**Operating Humidity:** 5% to 93% non-condensing  
 General Standard according to EN50130-5 Class I

**Electro Magnetic Compatibility:**

**Emission:**

- PAL model: EN 55022, Class B;
- NTSC model: FCC part 15, Class B

**Immunity:** EN 55024 for ITE equipment

**Certification:** CE, ULI950 & FCC

**Power Supply Unit:**

**Temperature range:**

- Operating: -5 to 45°C (23 to 113°F)
- Storage: -40 to 70°C (-40 to 158°F)

**Operating Humidity:** 5% to 95% non-condensing  
 General Standard according to EN50130-5 Class 2

**Electro Magnetic Compatibility:**

**Immunity:** Meets FCC part 15, Class B

**CE:** Compliant, class B

**Delivered accessories**

- Set-up software for Windows 98/NT4
- Cross-wire network cable
- DB 15 connector

9498 962 42112 01-05

© 2001 Philips Electronics N.V.  
© 2001 Philips Communication, Security & Imaging, Inc.  
All rights Reserved. Philips® is a registered trademark of  
Philips Electronics N.V.  
Data subject to change without notice



**PHILIPS**

*Let's make things better.*