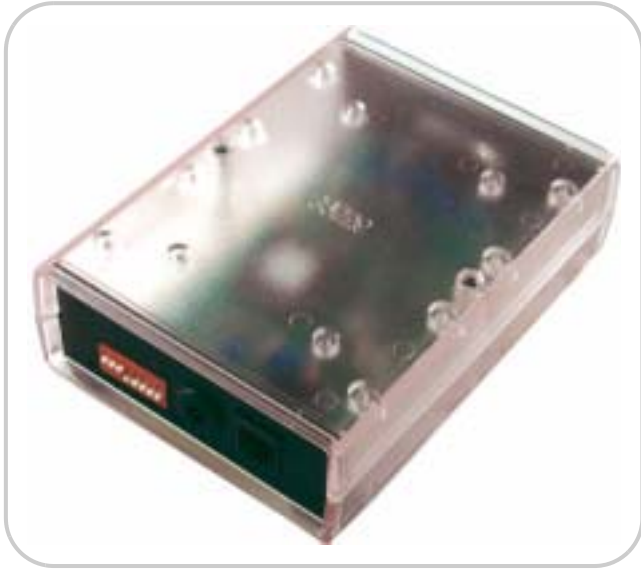


## DX4010i RS-232 Serial Interface Module

Prod. ID DX4010i



The DX4010i RS-232 Serial Interface Module creates a local connection between compatible control panels and approved applications or other RS-232 devices. The module connects to the control panel's data bus which provides power and data.

### ■ System Overview



The DX4010i RS-232 Serial Interface Module connects to:

1. A control panel through the data bus connector.
2. A serial printer through the RS-232 connector.
3. A PC or a parallel converter cable box (not shown) through the RS-232 connector.

### ■ Features

- Transparent enclosure
- Diagnostic light emitting diodes (LEDs)
- RJ-16 data bus connector
- DIP switches for address and bus programming
- Remote programming direct connection
- DB9 DTE RS-232 connector

### ■ Functions

#### Transparent enclosure

The diagnostic LEDs show through the transparent enclosure, making troubleshooting easy and convenient.

#### Diagnostic LEDs

There are four diagnostic LEDs that provide information about the transmission and receipt of data.

#### Two Red LEDs

BUS RX

BUS TX

#### Function

Data bus receives data from control panel

Data bus transmits data to control panel

#### Two Green LEDs

SER RX

SER TX

#### Function

RS-232 receives data from serial device

RS-232 transmits data to serial device

#### DIP switches

Use the external DIP switches to easily assign an address to the DX4010i RS-232 Serial Interface Module.

#### RJ-16 data bus connector and DB9 DTE RS-232 connector

Use the RJ-16 data bus connector for a remote programming connection. Use the DB9 DTE RS-232 connector to connect to approved RS-232 devices.

## ■ Planning

### Compatibility information

Serial interface module	DX4010i RS-232 Serial Interface Module
Compatible applications/RS-232 devices	<ul style="list-style-type: none"><li>• RPS</li><li>• PC9000</li><li>• System 3T</li><li>• CMS 7000</li><li>• Serial printers</li></ul>
Compatible control panels (version 6.0 or higher)	<ul style="list-style-type: none"><li>• D9412 Control Panel</li><li>• D9412G Control Panel</li><li>• D9112 Control Panel</li><li>• D7412 Control Panel</li><li>• D7412G Control Panel</li><li>• D7212 Control Panel</li><li>• D7212G Control Panel</li></ul>
Additional compatible control panels	<ul style="list-style-type: none"><li>• D6412 Control Panel</li><li>• D4412 Control Panel</li><li>• DS7240 Control Panel</li><li>• DS7220 Control Panel</li><li>• DS7400Xi Control Panel (version 2.02 or higher)</li></ul>

The DX4010i RS-232 Serial Interface Module replaces the following modules:

- D9133 Serial Interface Module
- D9133DC Serial Interface Module
- D9533 RS-232 Serial Interface Module
- DX4010 RS-232 Serial Interface Module
- DS7412 RS-232 Serial Interface Module

## ■ Specifications

Environmental Considerations	
Operating Temperature:	+32°F to +122°F (0°C to +50°C)
Relative Humidity:	5% to 85% at +86°F (+30°C) non-condensing
Power Requirements	
Current (Maximum):	50 mA nominal, 55 mA with LED
Voltage (Operating):	8 VDC to 14 VDC