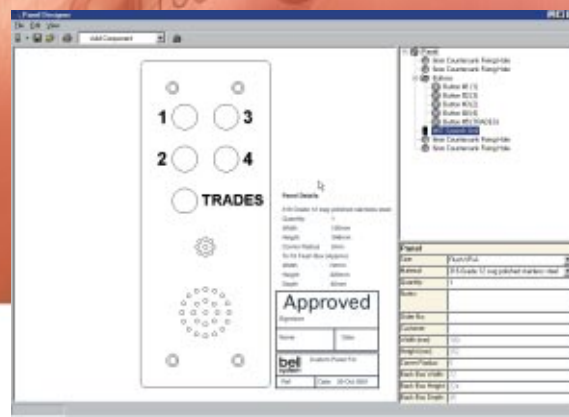


Door Entry Panels – VRP Range (Vandal Resistant Panels) & LCP Range (Laser Cut Panels, Vandal Resistant)

In vulnerable areas the entrance panel may be subject to vandalism. This is common within local authority and public housing. Although it is impossible to withstand extreme acts of vandalism, our VRP panels are designed to resist all but the most determined of vandals.

They are manufactured in our factory from 2.5 mm 316 marine grade* stainless steel or optionally in solid brass. They are supplied for flush mounting with a zintec back-box or optionally for surface fitting with a stainless steel cowling. In each case the panel is fixed to its back-box with tamper proof bolts (a special 1/4" hex bit is supplied). A single model B24S stainless steel vandal resistant push-button (or brass button for brass panel) is provided for each station and optionally for Trades.

For each push-button a number or letter can be engraved on the panel for permanent identification. The engraving of flat numbers is included in the price but any further engraving, e.g. Building names or instructions can be included for a modest surcharge. Although we generally supply panels to fit standard back boxes, they can be manufactured to custom dimensions. Prices for this obtained on application.



Since there are many variations with vandal panels we don't just show you a picture of a standard product but give you an illustrative and dimensioned drawing for you and your customer to approve. This is thanks to our **Panel Designer** software, devised in house by our software engineers, which instantly creates a custom layout that can include;

- Layout style for both VRP and LCP panels
- Indication of Surface or Flush fitting
- Custom engraving with numbers and text
- Trades facility
- Cut out for Video camera, PAC and keypads

Ordering Information:

Order a model VRP n, where n is the number of push-buttons required
 e.g. a 4 button unit would be a model VRP4.
 (Please include an extra push-button should a Tradesmen/Services button be required.)
 For surface panels add -S to the order code e.g. VRP4-S



The LCP panel offers even greater protection than the VRP panels and will resist most attacks of vandalism.

Main Features

- The front-plate consists of an overlapping bezel and a removable plate cut by a laser from the same sheet of 2.5 mm 316 marine* grade stainless steel. This leaves a gap of just 0.2 mm rejecting implements that could be used to force the panel from its box.
- The bezel is securely welded to a back-box of 1.5 mm 316 grade stainless steel. This provides an extremely strong fixing to the wall.
- The removable plate is fixed to the bezel and back box with countersunk A2 stainless steel security bolts requiring the use of a specialist tool for their removal (supplied).
- Vandal resistant push-buttons are included which have an internal shoulder to prevent the button being forced through. They are individually attached by means of a back nut on the rear of the panel. For each push-button a number or letter can be engraved on the panel for permanent identification. The engraving of flat numbers is included in the price but any further engraving, e.g. Building names or instructions can be included for a modest surcharge.
- The speech module is firmly held in place behind the grill with studs.
- As with the VRP panel a wide range of options can be included such as a cut outs for a Video camera, PAC readers (or other proximity readers with stud fixings) and keypads for access control.



Model LCP8

* Important note

Despite the fact that the highest quality of 316 marine grade stainless steel is used in the manufacture of our panels they can still be prone to tarnishing in some coastal locations or in areas of industrial pollution. If in doubt about the suitability of these panels in your area please contact us for advice.

Ordering Information:

Order a model LCP n, where n is the number of push-buttons required e.g. a 4 button unit would be a model LCP4.
 (Please include an extra push-button should a Tradesmen/Services button be required.)