

AXIS Camera Management

Efficient management tool for your Axis network video products

In any installation, with few or many Axis video products, the AXIS Camera Management offers powerful and efficient installation and management capabilities.

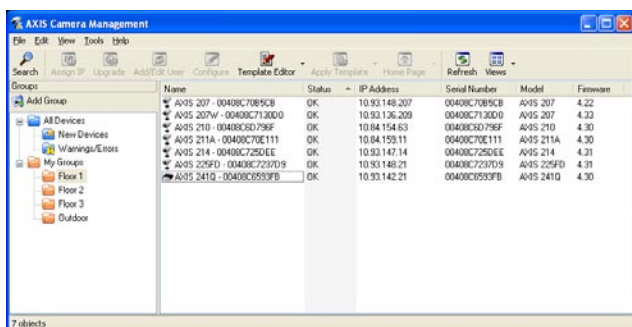
With this software installed on your Windows PC you can automatically locate multiple Axis video products on the local network using standard network protocols. Furthermore, you can set the IP addresses, configure, show connection status and manage firmware upgrades of multiple Axis video products sequentially or in parallel. Remote video devices with known IP addresses can also be managed.

For simplified overview, the video devices can be grouped into user defined groups and subgroups such as Building A - Second floor, etc. When new Axis video products are added to the network, or if status changes e.g. connection lost, the video devices are placed in pre-defined groups for easy handling. Video devices may easily be re-grouped, making it possible to view and manage your specific surveillance installation efficiently. The AXIS Camera Management allows secure ways to connect to Axis video products using HTTPS encryption.

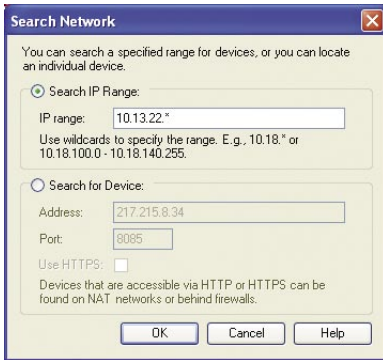
This flexible management software simplifies management of your Axis video products over the network.



- Locate Axis video products on the network
- Set IP addresses
- Configure single or multiple units
- Show status of local and remote video devices
- Upgrade firmware of multiple units sequentially or in parallel
- Use standard Internet protocols



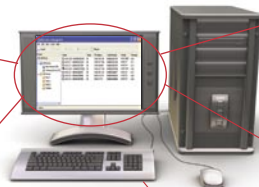
Specifications	
Supported products	AXIS 2xx video products with firmware version of 4.03/4.10 or higher except AXIS 205/230/250S/262/292
Finding new devices	The local network is monitored periodically for new video devices
Device grouping	Groups for new devices Devices with changed status User defined groups
IP setting	Set fixed IP address from AXIS Camera Management manually or within a defined range
Remote devices support	Known IP addresses of supported remote devices, outside the Local Area Network, can be entered manually
Configuration	Single unit configuration or multiple unit configuration using templates. Templates can be created from an existing unit or from the beginning
User management	List/add/edit/remove users
Unit status	Reachable status shown for known devices
Firmware upgrade support	Upgrade of multiple units sequentially or in parallel Automatic download of latest available firmware from Axis
Firmware upgrade	HTTP or HTTPS
Logging	Activity log with sort/search functions showing performed actions and changed unit status
Security	HTTPS encryption used between application and video device if supported by video device Video device passwords are remembered and encrypted and can only be used by the user who defined them Only standard network protocols used to locate units, firmware upgrade and check status
Language	English
Minimum system requirements	Pentium III CPU 1 GHz or higher, or equivalent AMD 256 MB RAM XGA (1024x768) video card. Windows XP Pro SP1, Windows 2000 SP4, Server 2003 SP1 Microsoft .NET 2.0 (included in installation package) For other operating systems and browsers see www.axis.com/techsup
Supported protocols	IP, HTTP, HTTPS, SSL/TSL, TCP, UPnP (SSDP), ICMP, Bonjour More information on protocol usage available at www.axis.com



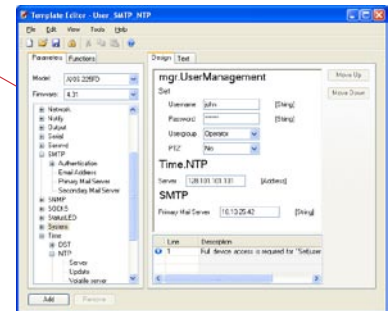
The AXIS Camera Management tool finds video devices connected to local as well as remote networks



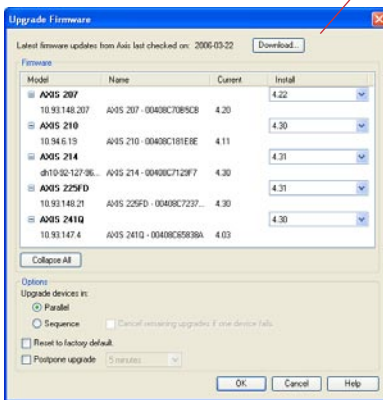
Easy assignment or change of IP address



AXIS Camera Management



Easy configuration of Axis video products



Single or multiple Axis video products of different models can easily be firmware upgraded sequentially or in parallel

AXIS 211 Network Camera

AXIS 221 Day & Night Network Camera

AXIS 213 PTZ Network Camera

AXIS 232D Network Dome Camera

AXIS 241S Video Server

LAN

Router/
firewall

Internet

Router/
firewall

Remote
cameras

AXIS 214 PTZ Network Camera

AXIS 221 Day & Night Network Camera

www.axis.com

