



AXIS Camera Recorder

Visionary software for easy recording and monitoring!

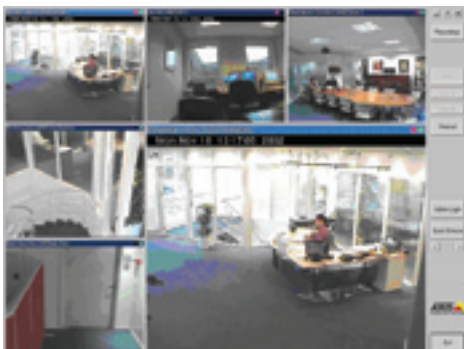
Installed onto your Windows PC, AXIS Camera Recorder software offers all core video recording and monitoring functionality at an attractive price level.

AXIS Camera Recorder is the perfect solution when you need video surveillance with recording of video, and it enables you to record continuously, on schedule, on alarm or when motion is detected.

Together with Axis network cameras and video servers, this versatile software takes advantage of your existing network infrastructure. Easy to use, install and maintain.

Choose to be alerted through computer sound or via computer e-mail. Click the mouse and find important events using the motion activity level based search function or use the database date/time search.

AXIS Camera Recorder is ideal for maintaining a good visual track on your hotel, service site or factory, where you need to record and monitor movements for safety and security.



- Complete solution for your core video recording and monitoring needs
- Record continuously, on schedule, on alarm or when motion is detected
- Find important events with a click of the mouse using the motion activity level based search function
- Alerting through computer sound or e-mail
- Interactive control of Pan/Tilt/Zoom cameras

AXIS[®]
COMMUNICATIONS



Product Features

- Record from and view cameras at up to 30/25 (NTSC/PAL) frames per second
- Support for up to 16 cameras per installation/license
- Image database (up to 160 GB) with recovery options
- Automatic database resizing for continuous recording at low disk space
- Scheduled recording on time and/or events
- Advanced motion detection with exclude filter for image areas of no interest
- Limit recordings to images on motion or alarm
- Receive motion alerts via e-mail
- All system messages on-screen, in log files and optionally via e-mail
- Find specific recordings by date/time or event
- Playback of recordings in real-time, or at controllable speed and play direction
- Control of PTZ cameras
- Up to 25 PTZ preset positions per camera for fast PTZ control
- Advanced input/output control
- Export single images and video sequences

Operating System Requirements

- Windows XP Professional, 2000 or NT (SP3)
- Internet Explorer 5.0, or higher
- TCP/IP support

Minimum Hardware Requirements

- Pentium 4.1 GHz processor
- 512 MB RAM
- 40 GB free hard disk space
- CD-drive
- SVGA or higher resolution monitor
- Microsoft mouse or compatible pointing device

Axis Camera & Video Server Support

- AXIS Camera Recorder supports the following Axis devices: AXIS 2100, AXIS 2110, AXIS 2120, AXIS 2130, AXIS 2400, AXIS 2400+, AXIS 2401, AXIS 2401+, AXIS 2420. Devices must be installed with firmware 2.34 or higher

Minimum Processor Requirements for Frame Rates		
PAL Cameras	10 fps, medium compression	10 fps, high compression
1 camera	P4, 1.0 GHz	P4, 1.0 GHz
4 cameras	P4, 1.0 GHz	P4, 1.0 GHz
8 cameras	P4, 1.8 GHz	P4 1.0 GHz – P4, 1.8 GHz
16 cameras	P4, 3.06 GHz	P4, 1.8 GHz
PAL Cameras	25 fps, medium compression	25 fps, high compression
1 camera	P4, 1.0 GHz	P4, 1.0 GHz
4 cameras	P4, 1.8 GHz	P4, 1.8 GHz
8 cameras	P4, 3.06 GHz	P4, 3.06 GHz
16 cameras	N/A	N/A

Approximate Total Frame Rates for Various Configurations			
PAL Cameras	P4 1.0 GHz, Medium Compression	P4 1.8 GHz, Medium Compression	P4 3.06 GHz, Medium Compression
1 camera	25	25	25
2 cameras	50	50	50
4 cameras	80	90	100
8 cameras	65	140	170
16 cameras	50	160	200



For more information visit our website: www.axis.com