

DATALOG MODULE



Highlights

- Data transfer via RS-232 (TCP/IP in the works)
- Data integration into live camera images with display of up to 10 lines
- Freely configurable font, font size, font colour, background colour as well as position
- Automatic alarm notification for key words
- Event search via key words, time, date, device
- Full network compatibility

The DataLog module is a software enhancement for MULTIEYE-HYBRID and MULTIEYE-NET software (from version 2.0.1). This enhancement enables the integration of data devices such as registers (POS), ATMs, access controls, scanners (bar code readers), SPS controllers, GPS receivers, etc.

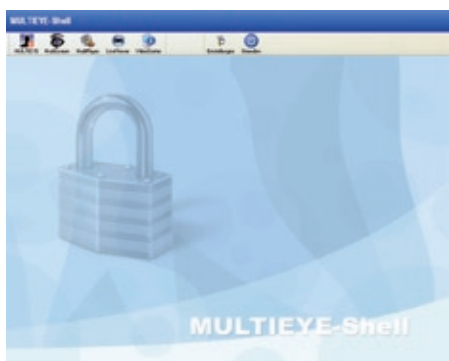
The data is displayed in the live camera image via the MULTIEYE recorder's RS-232 interface (TCP/IP connection is in the works) and is linked to the video recording. The recorded data can be evaluated by key words (e.g., "cancel") and displayed together with the relevant video.

Through such key words, automatic notifications can automatically be dispatched via mail or SMS. The MULTIEYE software supports the operation of up to 32 devices per recorder!

The DATALOG can be operated with analogue and/or IP cameras

| Article no. | delivery contents |
|-------------|--|
| 810172 | DataLog Module |
| 810173 | DataLog License for one additional data device |

SHELL MODULE



Highlights

- No access to the Windows level without authorization
- Direct start-up of the shell desktop
- Interconnection to several programs is possible
- Ideal tool for exclusive operation as a recorder

Software to protect against undesired use of Windows

With the shell module, users can be denied access to Windows and restricted to only MULTIEYE functions.

In this case, MULTIEYE only be closed down via the shell desktop interface. Access to the Windows interface can only be obtained with a password. Supplementary programs can be connected to the shell interface, such as Live-Viewer or Office applications. The appearance of the shell desktop interface can be individually adapted.

| Article no. | Delivery contents |
|-------------|-------------------|
| 810153 | Shell Module |