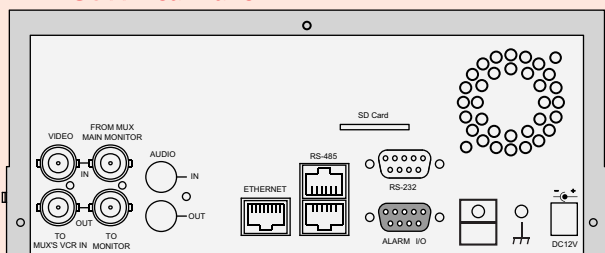


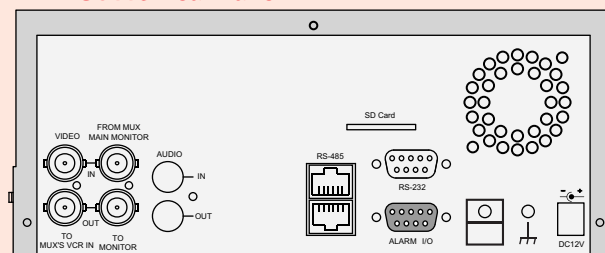


DVR-3011S: Model without Network Function

DVR-3011 Rear Panel



DVR-3011S Rear Panel



Features:

- Capable of working with various known multiplexers.
- Maximum 2 hard-disk drives capability.
- Hard-disk drive hot-swapping capability.
- Pre-alarm image recording.
- Image quality selectable at 4 different levels for recording.
- Schedule/Alarm/Manual/Circular recording mode.
- Quick search by time, alarm, event, and filter(thumbnail) recording list.
- Fast and slow playback of recorded video at various speeds and Single-picture playback.
- Password protection.
- Motion detection.
- Disk-full warning.
- RS-232, RS-485 communication port.
- Power interruption recovery.
- Audio function included.
- Built-in SD card reader.
- Network Capabilities (DVR-3011 only)
 - Distributing live and recorded images through TCP/IP network environment.
 - Support DHCP protocol.
 - Remote system adjustment
 - Multiple-multiplexer decoding

Compatible with following MUX

DECODER BY DVR

USA	ATV, AVE, GYYR, PELCO KALATEL/IMPACT ROBOT, SENSORMATIC
UK	DEDICATED MICROS
GERMANY	ENEO, SANTEC
EUROPE	VANTAGE, XPERVISIO
JAPAN	PANASONIC, TOSHIBA
TAIWAN	APPRO

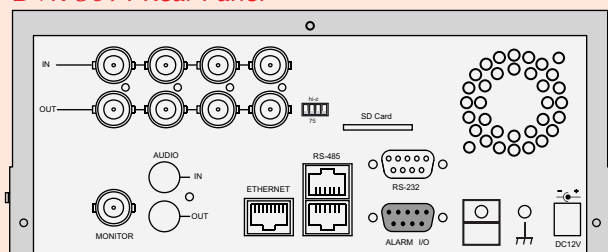
DECODER BY NETWORK SOFTWARE

USA	ATV, PELCO ROBOT, SENSORMATIC
UK	DEDICATED MICROS
GERMANY	SANTEC
EUROPE	VANTAGE, XPERVISIO
JAPAN	TOSHIBA
TAIWAN	APPRO

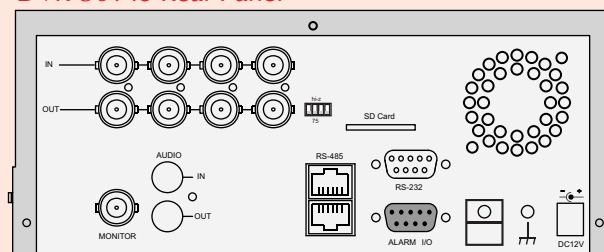


DVR-3014S: Model without Network Function

DVR-3014 Rear Panel



DVR-3014S Rear Panel



Features:

- Time-lapse and real-time recording.
- Each channel has up to 30 IPS with quad format.
- Maximum 2 hard-disk drives capability.
- One hard-disk drive hot-swapping capability.
- Pre-alarm image recording.
- Image quality selectable at 4 different levels for recording.
- Schedule/Alarm/Manual/Circular recording mode.
- Quick search by time, alarm, event, and filter(thumbnail) recording list.
- Fast and slow playback of recorded video at various speeds and Single-picture playback.
- Password protection.
- Motion detection.
- Audio function included.
- Built-in SD card reader.
- Disk-full warning and operation status LEDs.
- RS-232, RS-485 communication port.
- Power interruption recovery.
- On-screen setup menu, title and system timer.
- Network Capabilities (DVR-3014 only)
 - Distributing live and recorded images through TCP/IP network environment.
 - Support DHCP protocol.
 - Remote system adjustment

SPECIFICATIONS

Model Number	DVR-3011	DVR-3011S	DVR-3014	DVR-3014S
Resolution	NTSC: 720x240 ; 352x240 pixels PAL: 720x288 ; 352x288 pixels		NTSC: 720x480 ; 352x240 pixels PAL: 720x576 ; 352x288 pixels	
Video Input	Composite Video In (BNC) x 1 Multiplexer Monitor In (BNC) x 1		BNC x 4	
Video Outout	Composite Video Out (BNC) x 1 Multiplexer Monitor Out (BNC) x 1		Mon1(BNC) x 1 Looping(BNC) x 4	
Audio In/Out	Line In / Out (RCAX2), 16 bits, 8 kHz			
Compression	MJPEG			
Storage Media	1 Fixed HDD, 1 Removable HDD			
Memory Card	SD Card			
Archive	Hot Swappable Removable HD			
Watermark	Digital Signature			
Recording Rate (each channel)	NTSC: 30 IPS for 720x240 60 IPS for 352x240 PAL: 25 IPS for 720x288 50 IPS for 352x288		NTSC: 15 FPS for 720x480 30 FPS for 352x240 PAL: 12 FPS for 720x576 30 FPS for 352x288	
Image Size (approximate)	Best(48KB) / High(32KB) / Standard(21KB) / Basic(16KB)		Best(64KB) / High(50KB) / Standard(40KB) / Basic(32KB)	
Recording Type	Image Record		Frame Record	
Recording Mode	Schedule / Manual / Alarm / Circular			
Alarm Recording	Event / Pre-Alarm / Post Alarm			
Pre-alarm Recording	100 Pictures		50 Pictures	
Playback Speeds	Frame Stepping, 1/16 X, 1/8 X, 1/4 X, 1/2 X, 1 X, 2 X, 4 X, 8 X, 16 X, 30 X, 100 X			
Record Search	Time / Date / Event list / Filter(thumbnail) / SD Card			
Language	English / Chinese(T)			
Set-up Menu	Multi-layer, Network setting	Multi-layer	Multi-layer, Network setting	Multi-layer
Log List	2048 records			
Alarm In/Out	1 Alarm Input / Output		4 Alarm Input / 1 Alarm Output	
Software Upgrade	Upgrade via Memory Card(SD Card)			
Motion Detection	Yes			
Built in Buzzer	Yes			
Communication Port	RS-232, RS-485			
Password Protection	Menu Setup, Remote Access	Menu Setup	Menu Setup, Remote Access	Menu Setup
Network Interface	Ethernet RJ-45 x 1 (10/100 base-Tx)	N/A	Ethernet RJ-45 x 1 (10/100 base-Tx)	N/A
Network Protocol	TCP/IP, DHCP, HTTP, UDP, FTP	N/A	TCP/IP, DHCP, HTTP, UDP, FTP	N/A
Power Supply	Input: 100-230V, 50/60 Hz; Output: DC12V max 5A: (AC adapter)			
Dimensions	220 x 94 x 340 mm EIA 19" 2U Half Size Mountable			
Operating Temperature	5 - 40 °C (41 -104 °F)			
Regulation	FCC, CE, UL		FCC, CE	