



ADC720 Series

COLOR SPECIALTY CAMERAS



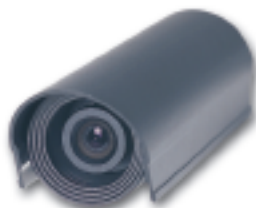
ADC720D



ADC723PIR



ADC722WP



ADC721B

FEATURES

- 1/3-inch interline color imager, NTSC format
- 330-line color imager
- Sharp picture
- 2.0 lux light sensitivity
- Sensitive to IR illumination
- Discreet housings
- Automatic electronic shutter
- Automatic gain control
- Auto tracing white balance
- 12 VDC input via included power supply
- ADC722WP includes IR illumination and is weather resistant

The ADC720 Series cameras feature a color imager that delivers a sharp picture at a very economical cost.

The ADC720 Series offers cameras in housings different than your typical standard camera.

The ADC720D features a 3.5-inch discreet dome housing that is an attractive alternative to a standard camera.

The ADC721B features a low silhouette tube design that will fit in with most decors.

The ADC722WP is a weather resistant tube design that meets IP57 for weather resistance. The built in IR illumination LEDs allow this camera to produce a picture with 0 lux ambient light. The 12 IR LEDs provide coverage up to 10 meters (30 ft) to deliver a sharp picture while producing no visible light. In low light when the IR illuminators are operating the camera electronically switches to black and white.

The ADC723PIR is a camera mounted in a standard motion detector shell. The camera blends in to the background appearing as a security system device. People are unaware that there is video surveillance in the area.

AMERICAN DYNAMICS ADC720 SERIES COLOR SPECIALTY CAMERAS

SPECIFICATIONS

Model Numbers

ADC720D Color camera in 3.5-inch micro dome with
3.6 mm lens

ADC721B Color camera in Bullet housing with
3.6 mm lens and mount

ADC722WP Color camera in weatherproof Bullet
housing with 4.0 mm lens and IR
illuminators and mount

ADC723PIR Color camera in non-functional PIR
detector housing with 3.6 mm lens

Operational

NTSC Imager Interline transfer 1/3-inch CCD

Video Output 1.0 Vp-p 75

Active Pixels Count 512 (H), 492 (V)

Minimum Scene Illumination 2.0 lux at F2.0

Horizontal Resolution 330 TVL

Light Compensation Modes Auto electronic shutter
1/60 to 1/100,000

Synchronization Modes Internal

White Balance Automatic

Geometric Distortion None

S/N Ratio -48 dB

Input Connectors

Input Power 2.1 mm

Composite Video BNC on cable

Electrical

Input Voltage 120VAC @ 60Hz

Power Supply Output 12VDC (±10%)

Power Consumption ADC720D 120 mA
ADC721B 120 mA
ADC722WP 120 mA
ADC723PIR 280 mA

Regulatory

Emissions FCC Part 15, Class B
ICES-003

Safety UL 1585 (power supply only)

Environmental

Operating Temperature -10° to 50° C (14° to 122° F)

Humidity 90% RH (non-condensing)

ADC522WP 100% RH

Storage Temperature -30° to +60° C (-22° to 140° F)

	ADC720D	ADC721B	ADC722WP	ADC723PIR
Dimensions	87 x 57 mm 3.4 x 2.2 in (D x H)	26 x 87 mm 1.02 x 3.4 in (D x L)	65 x 105 mm 2.5 x 4.1 in (D x L)	70 x 110 x 49 mm 2.7 x 4.3 x 1.9 in (W x H x D)
Weight	.18 kg .40 lbs	.30 kg .70 lbs	.55 kg 1.20 lbs	.18 kg .40 lbs
Shipping Weight	.43 kg .90 lbs	.55 kg 1.20 lbs	.80 kg 1.80 lbs	.43 kg .90 lbs
Environmental	Indoor Only	Indoor Only	IP57	Indoor Only

Note: All ADC720 Series cameras ship with a 120 VAC to 12 VDC UL listed power supply with a 6 foot cord. 12 VDC cameras will not line-lock and are not recommended to be used in a matrix switcher environment.