

# SYMMETRY™

## EN-753IHD NETWORK CAMERA

The Symmetry range of advanced network cameras provides compact design, coupled with full HD technology and H.264 video compression to meet all your video surveillance needs.

The Symmetry EN-753IHD is an indoor day/night fixed dome camera suitable for indoor applications. The compact design makes it ideal for discrete surveillance and monitoring of small spaces. Onboard support for Power over Ethernet ensures quick and easy installation coupled with increased reliability. This camera is also available with a one click auto focus option.

This high performance camera comes with inbuilt advanced motion detection and optional video content analytics encompassing 3D behaviour detection including loitering, entering/exiting, appear / disappear and tailgating filters. Motion detection features include, anti- tampering, shake cancellation and real-time event tracking.

Using Symmetry network cameras in combination with market leading Video Management Software delivers a high performance seamless video solution. Cost savings are also introduced as multiple or complex sites can be monitored from one central location. The Symmetry camera range is also operational with other leading Video Management software applications.

### KEY FEATURES

- High definition network indoor fixed dome camera
- Full Frame at HD 1080p
- Video Compression: H.264
- Optional one click auto focus
- Burnt-in Text, Video Motion Detection Support
- microSD Memory Support
- Remote Firmware Upgrade over Network
- ONVIF Support
- Embedded Video Analytics

### PURCHASING INFORMATION

- EN-753IHD-VR     Standard model
- EN-753IHD-MFZ     With one click auto focus

## SPECIFICATIONS

### Camera Module

- Image Sensor: 1/2.7" 1080p CMOS
- Number of effective pixels: 1920 x 1080
- Scanning System: Progressive scanning
- AGC Control: Auto
- Minimum Illumination: Color: 0.5 lux, BW: 0.001 lux (Sens-up 32X)
- Lens : EN-753IHD-VF: 3 – 9mm Vari-Focal F1.2
- EN-753IHD-MFZ: 3 – 9mm Vari-Focal F1.2 with Motorized Focus & Zoom
- Day & Night: IR Cut Filter Removal
- Smart Edge Enhance: Supported (Auto adjust the sharpness by Lux)
- 2D-DNR: Supported (1 ~ 16)
- White Balance: ATW / Manual / Push
- BLC: On(possible to designate zone) / Off
- Iris: DC Auto Iris

### Video

- Compression Format: H.264, MJPEG\*
- Number of Streams: Dual Stream\*, Configurable
- Resolution: 1920x1080, 1280x720, 800x450, 480x270, 320x180
- FPS: 30fps@ 1080p (enabling analytics reduces maximum FPS / resolution)
- Motion Detection: Built-in
- Burnt-in Text: Video stream overlay text
- Output: Analog video output for installation only

### Audio

- Input: 1 channel Output: 1 channel\*
- Compression Format: G.711

### Function

- Digital Input: 1
- Digital Output: 1\*
- Network: 10 / 100 Base-T
- Protocol: TCP/IP, UDP/IP, HTTP, RTSP, RTCP, RTP/UDP, RTP/TCP, SNTP, mDNS, UPnP, SMTP, IGMP, DHCP, DDNS, SSL v2/v3, IEEE 802.1X, SNMP v2/v3
- Memory Card Slot: Built-in Micro SD slot (SD card not included)
- Recommend Class 4 and higher for HD recordings

### Electrical

- Power Source: 12V DC
- PoE (IEEE 802.3af)
- Power Consumption (Approx): 460mA @ 12V DC

### Environmental

- Operating Temperature: Operating Range
  - 12V DC : 0°C ~ 50°C (32°F ~ 122°F)
  - PoE : 0°C ~ 50°C (32°F ~ 122°F)
- Operating Humidity: Up to 85% RH, Non-condensing

### Mechanical

- Material: Plastic (ABS)
- Color: Ivory
- Dimension: Housing: 144(d) x 121(H) mm,
- Dome: 100mm
- Weight (Approx.): 520g

\*Not supported by Symmetry

### Advanced Motion Detection (Included as Standard)

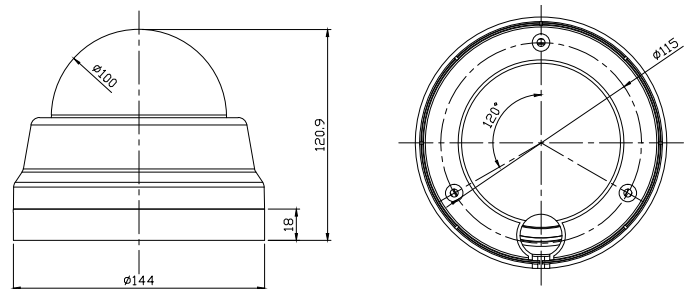
- High Performance: Advanced Tracking Algorithm, Low False Alarm Rate
- Easy to Use: Intuitive Web Browser Interface
- Detection Zones: Multi-segment Polygons and Lines
- On-screen Display: Real-time Display of Tracking Data and Events
- Camera Shake Cancellation: Improve the performance with cameras that are prone to shake
- Tamper Detection: Detect camera tampering

### Video Content Analysis (Option)

- Detection Behavior: Direction, Stopping, Loitering, Entering, Exiting, Appear, and Disappear Filters, Tailgating\* Detection
- 3D Behavior: Perspective Corrected Size and Speed Filters
- Statistics: Counting Functions and Other Statistics\*
- Meta Data: Plain XML Format\*

Analytics are powered by VCA Technology

### Dimension: (mm)



AMAG Technology

www.amag.com