

# Carrier-class WiMAX CPE Management System

## StarACS

StarACS ensures safe and automatic configuration of a variety of CPEs (Customer Premises Equipment) – a critical factor for service providers to expand market share. StarACS complies with the TR-069-specified CPE WAN Management Protocol (CWMP) for communication between CPEs and Automatic Configuration Servers (ACSs) as well as WiMAX Forum® and Broadband Forum guidelines. Designed specifically for WiMAX, StarACS supports the entire CPE service life cycle, including provisioning, software upgrades, configuration backups and online support. With a full range of mass configuration, maintenance and troubleshooting tasks launched from an intuitive GUI, StarACS enables reduced new subscriber acquisition and service provisioning costs.

### Remote CPE Management for Maximum Efficiency

StarACS enables operators to remotely manage, monitor, and diagnose data, voice, and video services on TR-069 CPEs providing major benefits in terms of management efficiency and economies of scale. System problems are quickly identified and resolved with updates carried out seamlessly eliminating truck roll costs.

### Task Manager for Batch and Bulk Handling

The StarACS task manager enables operators to perform batch operations on multiple CPEs. With simultaneous configuration task allocation when network traffic is low, StarACS saves time and significantly reduces management costs.

### Automatic Zero Touch Provisioning

StarACS automatically provisions and remotely sets up devices to support value-added services when subscribers register for new services. For first-time connections, the CPE automatically registers on the StarACS server and receives updated firmware, general and individual settings which result in shorter time-to-market and reduced costs.

### Northbound Interface

StarACS offers standards-based Web service (XML/SOAP) northbound interfaces for smooth connectivity with higher-level management system connectivity, such as OSS and CRM systems. This provides an abstraction level for service providers, eliminating the need to customize support for each CPE and significantly shortening OSS integration processes.

#### StarACS Benefits

- Benefit from low introduction costs and grow-as-you-go configurations to fit to any size network
- Manage the entire CPE service life cycle
- Comply with market standards
- Easily manage a variety of CPEs
- Shorten time-to-market for introducing new CPEs and services
- Enable reduced ongoing support costs, OPEX and Total Cost of Ownership (TCO)
- Reduce costly repair personnel dispatch
- Smoothly integrate with OSS/BSS layers
- Increase subscriber loyalty and satisfaction

## Headquarters

International Corporate HQ  
Tel: +972.3.645.6262  
Email: corporate-sales@alvarion.com

North America HQ  
Tel: +1.650.314.2500  
Email: n.america-sales@alvarion.com

## Sales Contacts

Australia:  
anz-sales@alvarion.com

Asia Pacific:  
ap-sales@alvarion.com

Brazil:  
brazil-sales@alvarion.com

Canada:  
canada-sales@alvarion.com

Caribbean:  
caribbean-sales@alvarion.com

China:  
cn-sales@alvarion.com

Czech Republic:  
czech-sales@alvarion.com

France:  
france-sales@alvarion.com

Germany:  
germany-sales@alvarion.com

Italy:  
italy-sales@alvarion.com

Ireland:  
uk-sales@alvarion.com

Japan:  
jp-sales@alvarion.com

Latin America:  
lasales@alvarion.com

Mexico:  
mexico-sales@alvarion.com

Nigeria:  
nigeria-sales@alvarion.com

Philippines:  
ph-sales@alvarion.com

Poland:  
poland-sales@alvarion.com

Portugal:  
sales-portugal@alvarion.com

Romania:  
romania-sales@alvarion.com

Russia:  
info@alvarion.ru

Singapore:  
asean-sales@alvarion.com

South Africa:  
africa-sales@alvarion.com

Spain:  
spain-sales@alvarion.com

U.K.:  
uk-sales@alvarion.com

Uruguay:  
uruguay-sales@alvarion.com

For the latest contact information  
in your area, please visit:  
[www.alvarion.com/company/locations](http://www.alvarion.com/company/locations)



[www.alvarion.com](http://www.alvarion.com)

© Copyright 2009 Alvarion Ltd. All rights reserved.  
Alvarion® and all names, product and service names  
referenced herein are either registered trademarks,  
trademarks, tradenames or service marks of Alvarion Ltd.  
All other names are or may be the trademarks of their  
respective owners. The content herein is subject to change  
without further notice.  
"WiMAX Forum" is a registered trademark of the WiMAX  
Forum. "WiMAX," the WiMAX Forum logo, "WiMAX  
Forum Certified" and the WiMAX Forum Certified logo are  
trademarks of the WiMAX Forum.  
215378 rev.a

## Specifications

### Server Capacity and Configuration

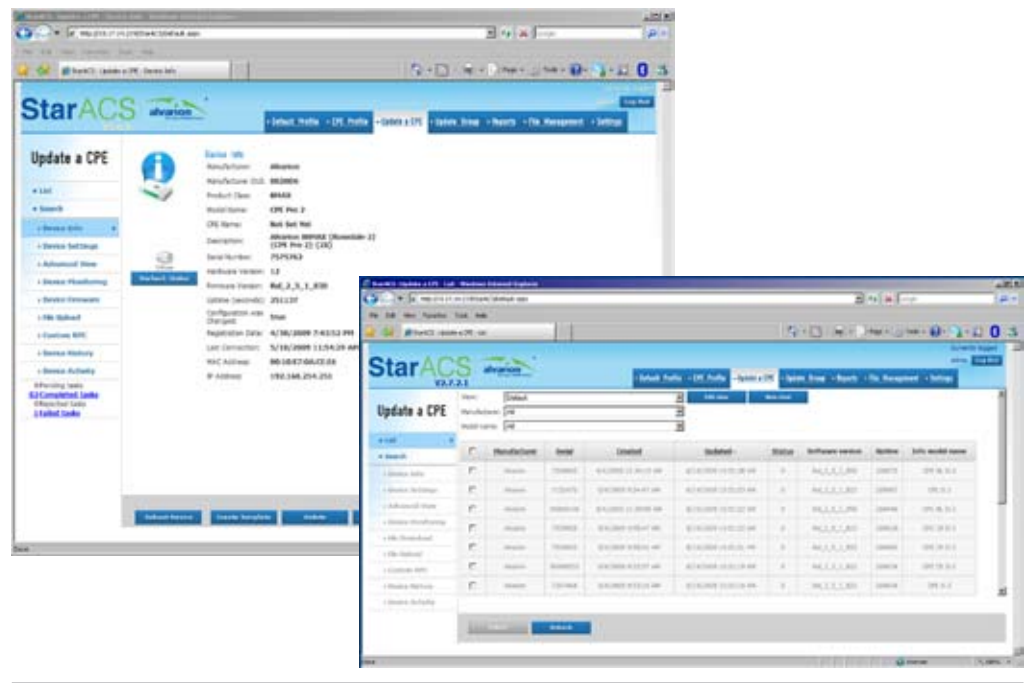
- Manages up to 50,000 devices on a single server
- Distributed architecture (front-end back-end servers) for 50,000 and up

### Supported Devices

- Alvarion
- AWB
- Gemtek
- Any 3rd party TR-069 based device (requires short Interoperability Testing (IOT))

### Protocol Support

- TR-069
- TR-068
- TR-104
- TR-064



**Alvarion's Star management suite** is a comprehensive, robust, carrier-grade family of products for ensuring the successful deployment of WiMAX services. The suite includes:

- AlvariStar: Carrier-class NMS for managing WiMAX base stations
- StarACS: Unified and standard system for managing a variety of WiMAX CPEs
- StarQuality: Performance monitoring system for ensuring QoS and network optimization
- StarReport: Powerful report generator for generating network inventory reports

## About Alvarion

Alvarion (NASDAQ: ALVR) is the largest WiMAX pure-player with the most extensive WiMAX customer base and over 250 commercial deployments around the globe. Committed to growing the WiMAX market, the company offers solutions for a wide range of frequency bands supporting a variety of business cases. Through its OPEN WiMAX strategy, superior IP and OFDMA know-how, and proven ability to deploy end-to-end turnkey WiMAX projects, Alvarion is shaping the new wireless broadband experience.