

Surface Door Closers

Features

- Independently tested to the requirements of BSEN 1154 and have been certified for use on both fire and non fire rated doorsets
- Suitable for right or left hand installation
- Easy to install, use and adjust
- Completely retro-fittable
- Adjustable latching and closing speeds
- Back check is an optional function which provides a cushion effect when the door is forcibly opened
- Heavy duty models can have a delayed action to provide slow passage
- Attractive silver finish
- CE & UL approved

Functionality

Designed to be aesthetically pleasing and used in a variety of applications. The surface closers are easy to install, reliable and only need minimal maintenance. Coupled with variable strength options. The closers come complete with fixing packs and comprehensive fitting instructions.

Models Available

Optima 170 Cam Action Concealed Closer

Adjustable strength from 2 - 4
 Complete with sliding track and arm
 Body dimensions 215 (L) x 54 (H) x 32 (W)
 Double action
 Suitable for standard doors 850mm (45kg), 950mm (60kg) & 1100mm (80kg)

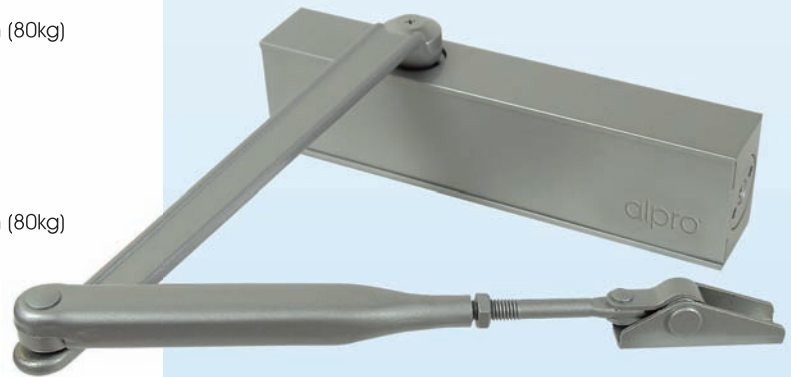
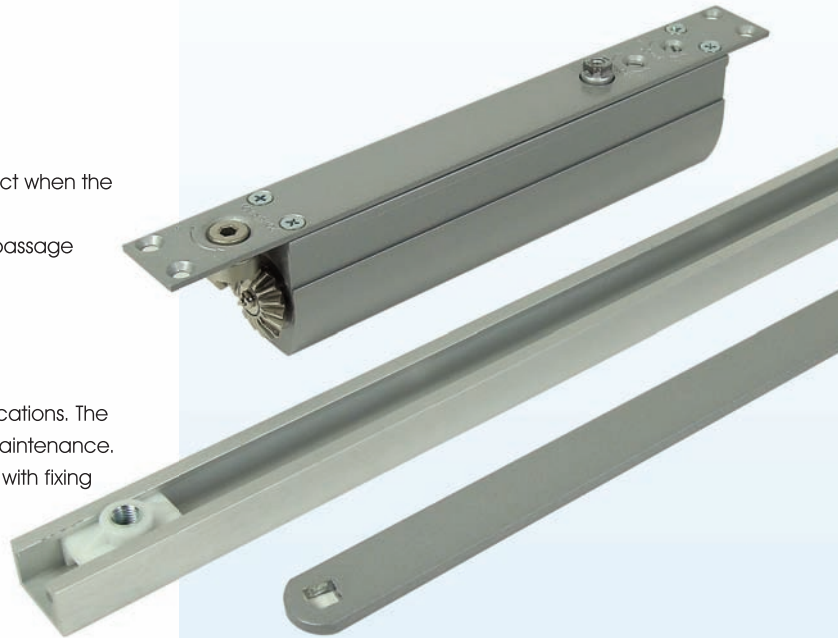
Optima 980 Surface Closer

Adjustable strength from 2 - 4
 Complete with standard arm
 Body dimensions 207 (L) x 55 (H) x 40 (W)
 Suitable for standard doors 850mm (45kg), 950mm (60kg) & 1100mm (80kg)

Optima 28A Surface Closer

Adjustable strength from 2 - 5
 Complete with standard arm and back check
 Body dimensions 236 (L) x 60 (H) x 38.5 (W)
 Suitable for standard doors 850mm (45kg), 950mm (60kg), 100mm (80kg) and 1250mm (100kg)

170 Cam Action
Concealed Closer



980 & 28A
Surface Closers

Code	Description
76ALP DR EN 180	Cam action closer with sliding track and arm
76ALP DR EN 980	Surface closer - strength 2 - 4 and standard arm
76ALP DR EN 28A	Surface closer - strength 2 - 5 with standard arm and back check



NO: 1121

