

surface door magnet

AL2400LP

Alpro's Vortex 2400 compact door magnet is a unique magnet with patented inbuilt technology ensuring improved performance and reliability and a real alternative to standard face to face magnets. Complete with a conical aperture to receive a strong alloy pin the unit embodies both magnetic and mechanical holding force. Independently tested to 1500kg, the holding force is 400% stronger, the body size is 75% smaller, power consumption is 50% lower and there is 75% less material used in the manufacturing processes making the Vortex greener and more environmentally friendly than its competitors. Complete with built in LED and dual monitoring.



High Physical Security

Holding force 1,500kg

Releases under Side Load Pressure

Magnet will release with up to 100kg of side load pressure when the power is removed

Weight

450g

Slimline Dimensions

218mm(L) x 35mm(W) x 30mm(D)

Multiple Voltage Input

Any voltage from 12vDC to 24vDC

Low Current Consumption

| Volts | Current |
|--------|---------|
| 12v DC | 240mA |
| 24v DC | 120mA |

Dual Monitoring

Locking and door position

Early Warning Alarm EW Technology

Magnets are fitted with EW pressure sensors able to send an alarm before access forced open. Also fitted with buzzer.

VORTEX®

Surface Mounting for easy retrofit

Armature Plate Security Bracket

No residual magnetism

Accessories

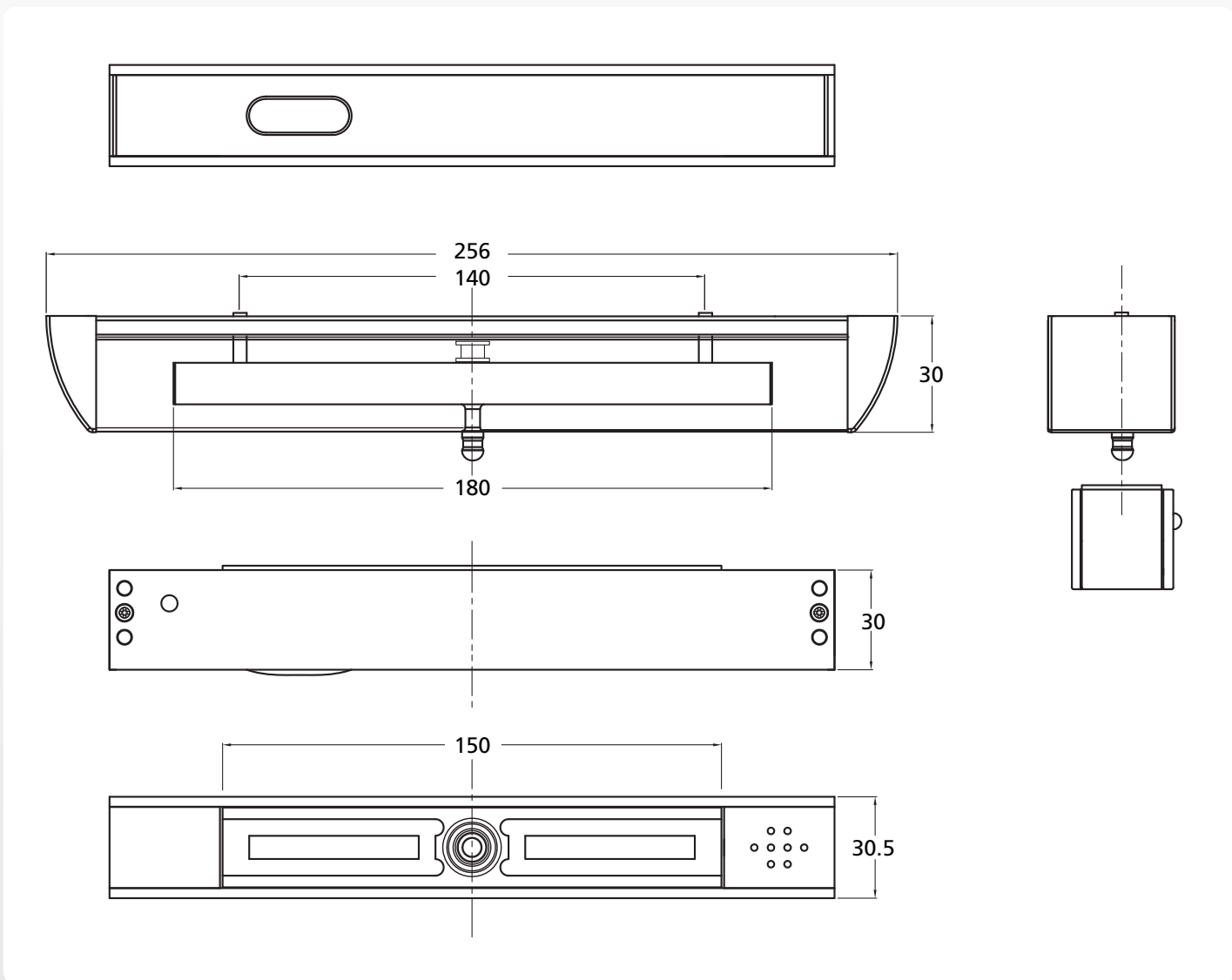
L & Z brackets

Glass door bracket

Patented

| DESCRIPTION | FINISH | CODE |
|--|----------------|--------------------|
| Surface mounted magnet. Secure armature – LED – 12/24vDC | Satin Anodised | AL2400-LP |
| Small mortice magnet – 12/24vDC | Satin Anodised | AL1982-35.5 |
| Automatic door magnet | Satin Anodised | AL4400 |

| ACCESSORIES | FINISH | CODE |
|-----------------------------------|----------------|------------------------|
| L bracket for 2400 model | Satin Anodised | ALAMLB2400 |
| L&Z brackets for 2400 model | Satin Anodised | ALAMZB2400 |
| Glass door bracket for 2400 model | Satin Anodised | ALUGB2400-10/12 |



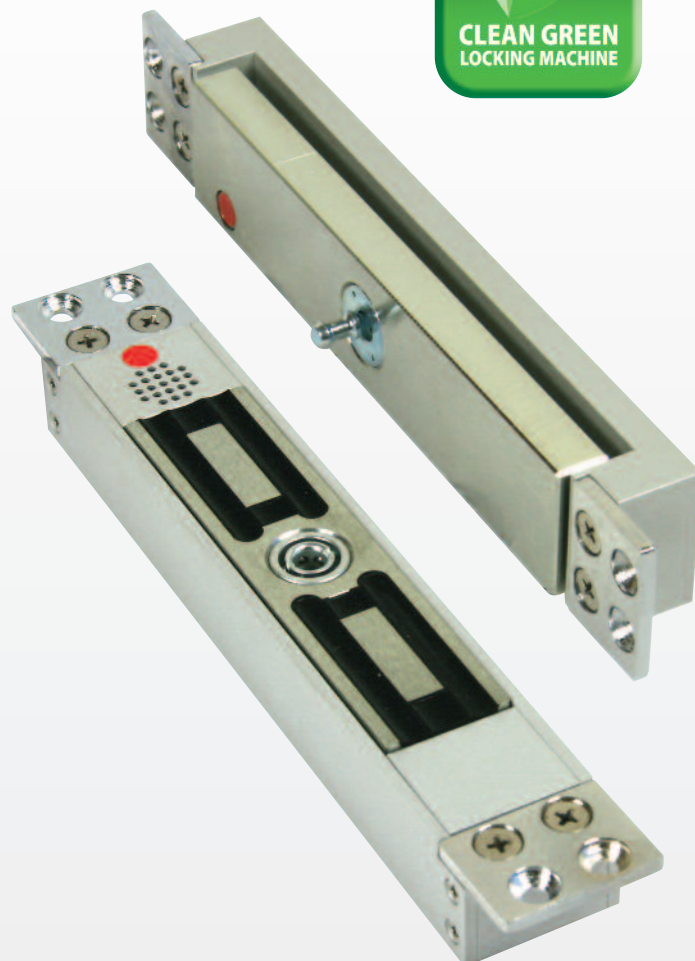
mortice door magnet

AL1982-35.5

The Alpro 1982.35.5 Vortex magnet is designed for use when a mortice type installation is required.

When external pressure is applied to open the magnet and break the hold of the unit, the pivoting pin head fitted into the electro magnet holes will initiate an additional locking from the upward movement of the integrated ball bearings which hold the pivoting pin head on the armature plate securely. When the power is disengaged from the magnet, it releases its hold on the armature plate and it returns to its normal state.

The unit requires a filtered and regulated DC power supply of the correct voltage to ensure the attraction of the armature plate is initiated. The unit operates on 12/24vDC and is complete with two built in SPST reed switch sensors for remote lock monitoring status and remote door monitoring status. The overall holding force of the unit is 1500Kgs.



High Holding Force

Holding force 1,500Kg

Releases under Side Load Pressure

Magnet will release with up to 100Kg of side load pressure when the power is removed

Weight

1.3Kg

Magnet Body Dimensions

226mm(L) x 35.5mm(W) x 26.5mm(D)

Armature Plate (including bracket) Dimensions

226mm(L) x 35.5mm(W) x 25.7mm(D)

Multiple Voltage Input

Any voltage from 12vDC to 24vDC

Low Current Consumption

| Volts | Current |
|--------|---------|
| 12v DC | 240mA |
| 24v DC | 120mA |

Dual Monitoring

Locking and door position

Early Warning Alarm EW Technology

Magnets are fitted with EW pressure sensors able to send an alarm before access is gained. Also fitted with buzzer.

VORTEX[®]

Built-in MOV Surge Protection

Mortice mounting for concealed installation

Armature plate security bracket

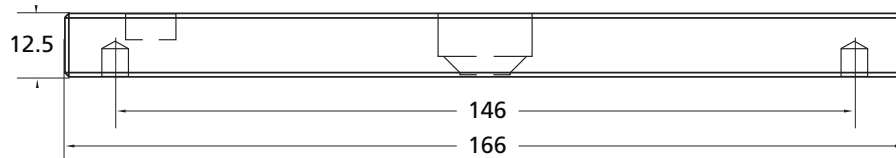
No residual magnetism

ISO and TÜV tested

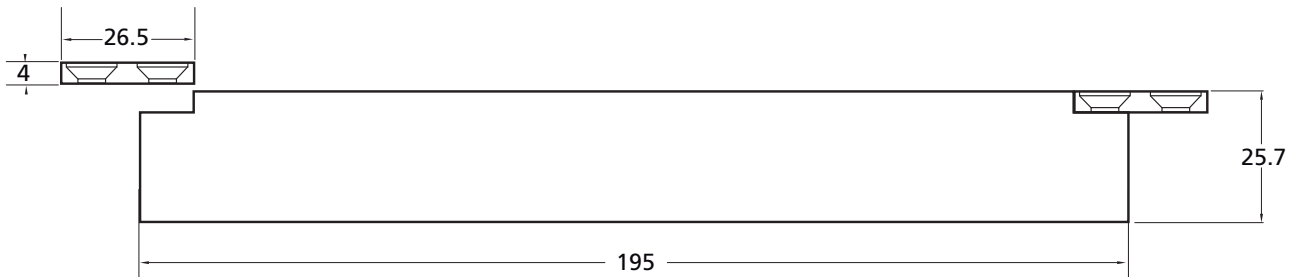
Patented

| DESCRIPTION | FINISH | CODE |
|---|----------------|-------------|
| Small mortice mounted magnet - 12/24VDC | Satin Anodised | AL1982-35.5 |

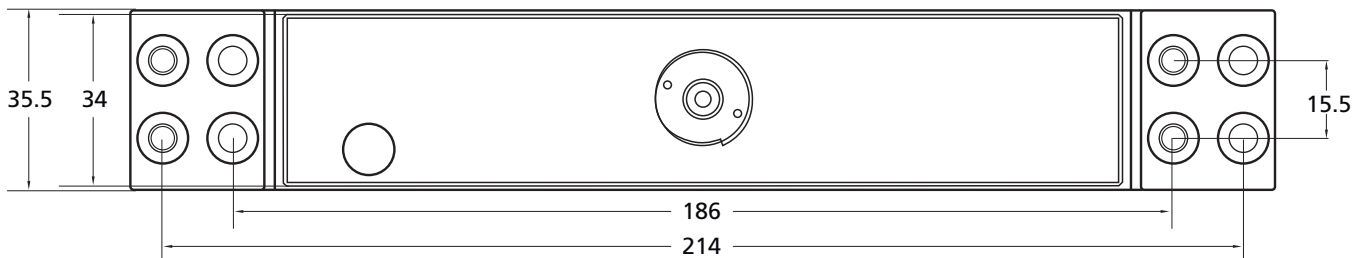
Armature plate



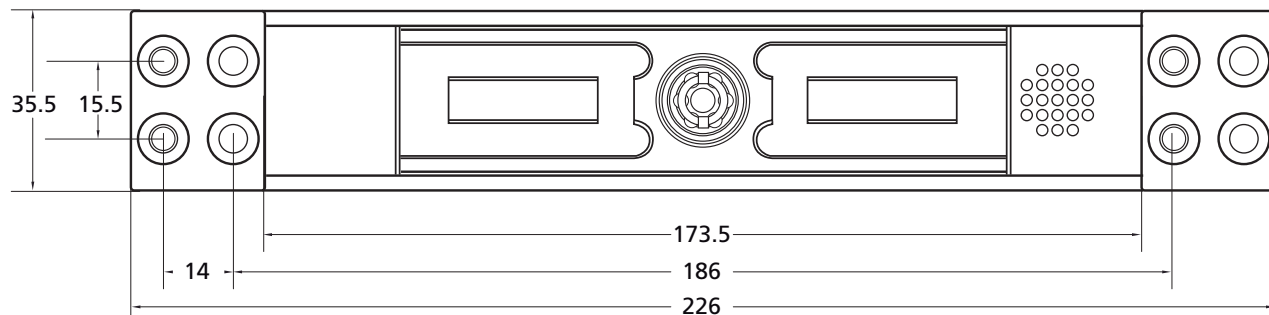
Armature plate including bracket (side view)



Armature plate including bracket



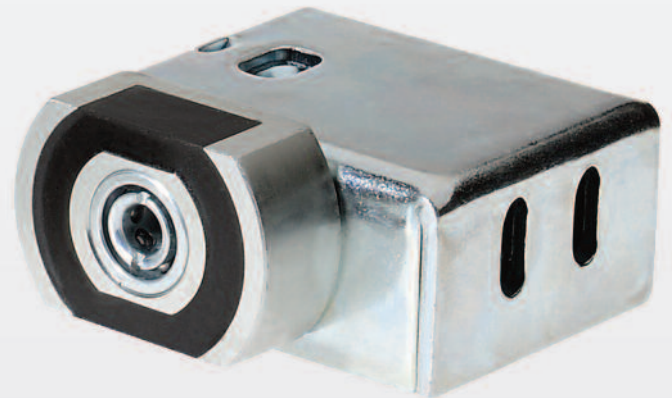
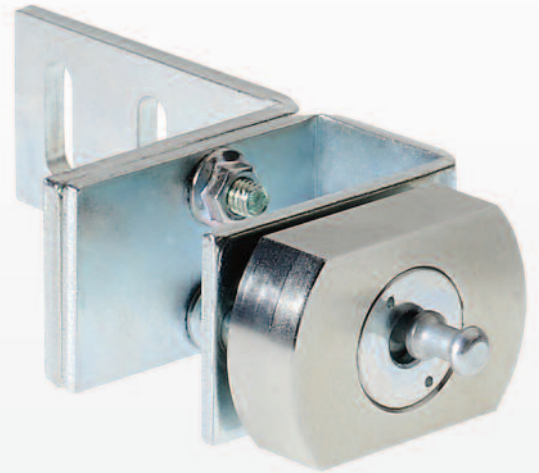
Magnet



automatic door magnet

AL4400

Alpro's patented AL4400 mechanical electro magnet is specifically designed for securing sliding door mechanisms both automatic and mechanical. The holding force of the magnet will depend on its fitting arrangement, but in test the average holding force has been shown to be 680Kgs. The installation is simple and the unit provides an additional and reliable locking solution which is superior to traditional electromechanical locking devices. The AL4400 can also be supplied with the necessary mounting accessories usually required by door manufacturers. The units operate on a 12v/24vDC power supply.



High Holding Force

Holding force 680Kg

Weight

400g

Slimline Dimensions

44mm (L) x 30mm (W) x 16.5mm (H)

Multiple Voltage Input

12vDC/24vDC

Low Current Consumption

260mA

Early Warning Alarm EW Technology

Magnets are fitted with EW pressure sensors able to send an alarm before access forced open.

Built-in MOV Surge Protection

Surface mounting for easy retrofit

Armature plate security bracket

No residual magnetism

ISO and TÜV tested

PatentedPatented

VORTEX[®]

| DESCRIPTION | FINISH | CODE |
|-------------------------------------|----------------|--------|
| Automatic door magnet - 12VDC/24VDC | Satin Anodised | AL4400 |

