

BU-3025

3-MegaPixel Outdoor 25 meter IR IPCAM

- 3 MegaPixel CMOS H.264 IP Camera
- Compatible with ONVIF Standard
- 20FPS at 3 MegaPixel and 30FPS at 1080p
- 802.3af Power over Ethernet Port
- Mechanical IR-Cut Filter Removable
- 4.3mm Japanese Wide Angle Lens
- Clear Motion Technology to reduce motion blur
- IR LED for up to 25m Coverage in Complete Darkness
- Free 64-Channel Recording Software and ONVIF Support
- SD/SDHC Memory Card Slot for Local Storage
- Internal Cooling Fan



AirLive BU-3025 is a high-end 3.0 MegaPixel (MP) network camera which is designed for professional outdoor surveillance and security applications. This 3.0MP IP camera offers many improvements in image quality when comparing to conventional surveillance cameras. Users are able to view live video streaming over the Internet, and it is not only one of benefits for using AirLive BU-3025. It is also designed to offer high-performance surveillance by being equipped with PoE port which allows power and data to be transmitted via a single Ethernet cable. This useful function provides an easier installation, lower cabling costs and allows placement of AirLive PoE cameras in locations without access to electrical source. With the IP66 waterproof housing, AirLive BU-3025 suits for environments such as stairs, main entrance, street, and basement

3.0 MegaPixel Video Quality, 9X Bigger than VGA Resolution

AirLive BU-3025 offers high quality image at a maximum resolution of 1080p@30fps - 9X higher resolution than a normal CCTV Camera. One of the most compelling advantages of 3.0 MegaPixel surveillance systems is the ability to capture the sharp videos, with more details per frame and not missing any finer details that are useful for such as license plate identification and human recognition. The new CMOS sensor also provides higher video quality and better images @30fps performance then the older 15fps video cameras.



Manufacturer

OvisLink Corp.

5F, No.96, Min-Chuan Rd., Hsin-Tien Dist., New Taipei City 231, TAIWAN

www.airlive.com

Night Vision and IR-CUT Removable (ICR)

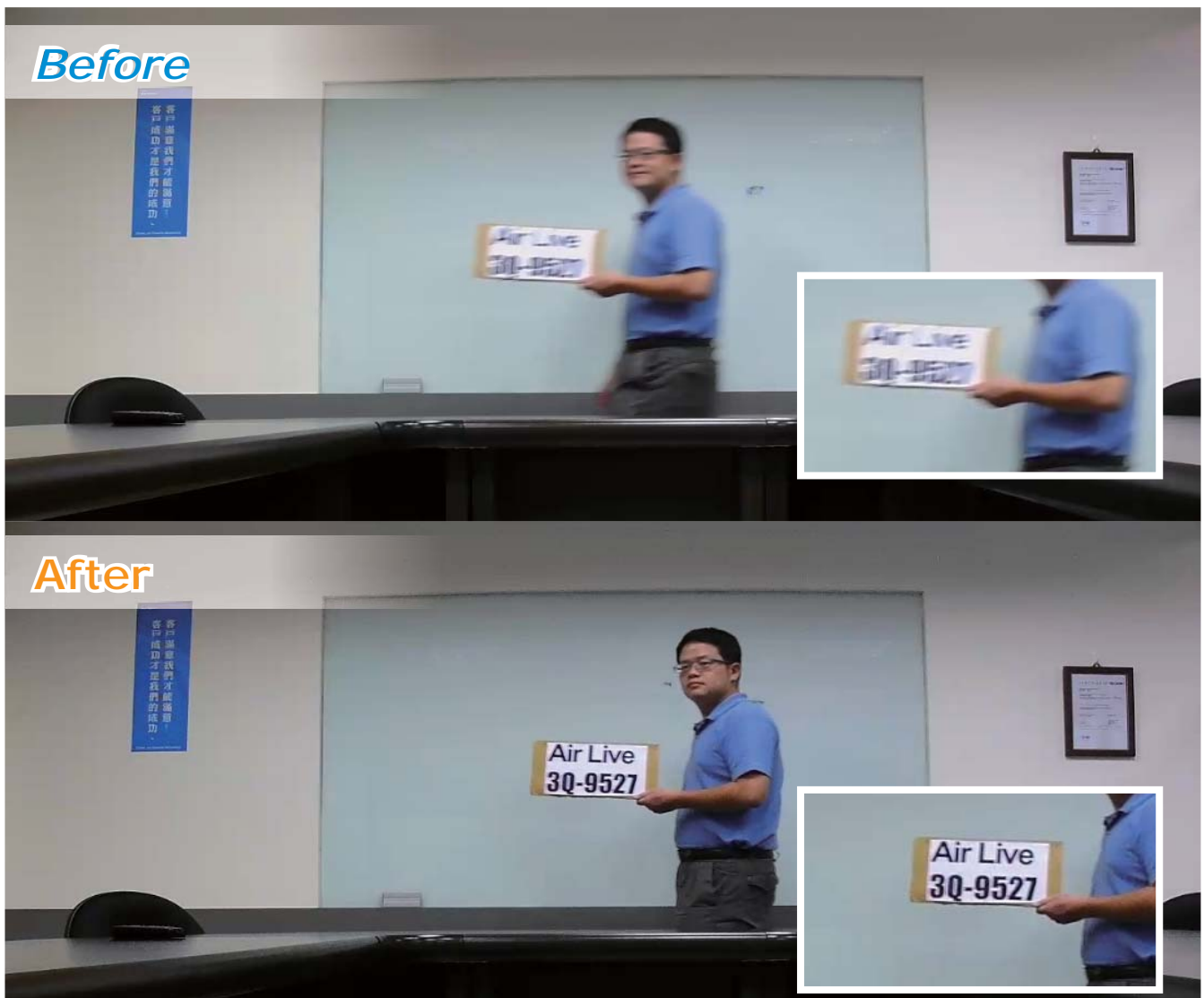
AirLive BU-3025 is designed for 24hr indoor/outdoor surveillance even in the harshest conditions. AirLive BU-3025 is equipped with high resolution CMOS sensor with infrared LEDs in up to 25m working distance. The auto-changeable IR filter also provides superior day/night performance. It also offers many important features such as PoE and digital input and output for external alarm & sensor.

SD Card Recording and 802.3af PoE

Memory card provides local storage function for saving image files to the specified SD card in your camera. This function can be enabled only when you insert the well-operative SD/SDHC card to the camera. The camera has 802.3af PoE port so you can install it away from the power source.

Optimize Clear Motion Technology for Moving Object

Even the most beautiful image will be useless if it is not able to catch the details of moving objects. AirLive has developed the Clear Motion Technology to minimize the motion blur caused by moving objects. You can have the details where you need it.



64-Channel Recording Software and IP Wizard

The surveillance software CamPro Express 64 lets user to view and record multiple live images at the same time. Using several supported Camara with CamPro Express 64, user can easily build up a surveillance system at different environment. Moreover, BU-3025 also supports CamPro Professional, which is AirLive's intelligent video surveillance recording software. It is designed to meet most demands for professional installations. With its video analysis functions, such as tempering detection, user can build up a stable and efficient surveillance system.



APPS for Android and iOS

AirLive has worked with IPCAM Viewer developer to add support for AirLive IPCAM. So you can view multiple AirLive cameras using Android device, iPhone, or iPad. For more information about Android or iOS apps, please visit the FAQ page.

Specifications

Camera

Camera Type

- Outdoor Bullet Type

Image Sensor

- 1/2.5" 3-MegaPixel CMOS Sensor

Sensor Resolution

- 2048 X 1536

Lens Type

- Board Lens
- 4.3 mm

Night Vision

- Built-In Removable IR Cut Filter

Max IR Distance

- 25M

Minimum Illumination

- Color: 0.05 Lux @ 30 IRE B/W: 0 Lux @ IR ON

Mechanical IR-Cut Filter

- Yes

Auto Iris

- none

Viewing Angle

- 71°50' (H) 56°70' (V)

Analog Video Out

- Yes

Video

Video Compression

- H.264 High/Main/Baseline Profile, MPEG4 Simple Profile and MJPEG

Video Profile

- 20

Resolution and Frame Rate

- 20 fps @ 2048 x 1536
- 30 fps @ 1920 x 1080
- 30 fps @ 1280 x 960
- 30 fps @ 1280 x 720

- 30 fps @ 720 x 480
- 30 fps @ 640 x 480
- 30 fps @ 320 x 240

Streaming

- Multi-profile streaming
- Streaming over UDP, TCP, or HTTP
- M-JPEG streaming over HTTP (for non IE browser)
- 3GPP mobile view
- Configurable frame rate and bandwidth
- Support both CBR and VBR

Image Processing

- AE, AWB
- Noise reduction
- Color, brightness, sharpness, contrast, Hue
- Mirror/Flip
- Text, time and date OSD

Digital Zoom

- 10X

Audio

Audio Encoder

- G.711 μ -law

Audio Streaming

- Two-way

Audio Input/Output

- speaker port and microphone port

Network

Ethernet

- One RJ45 Port; IEEE 802.3u Compliant 10/100 Mbps Fast Ethernet with Auto-MDIX

PoE

- IEEE802.3af

Supported Protocols

- IPv6, TCP/IP, UDP, ICMP, DHCP, NTP, DNS, DDNS, SMTP, FTP, HTTP, HTTPS, Samba,

PPPoE, UPnP, Bonjour, RTP, RTSP and RTCP

Security

- Password protection
- IP filter
- HTTPS

Users

- Up to 20 simultaneous users

LED and Button

Power LED

- Amber Color

Link/Act. LED

- Green Color

Reset Button

- Reboot and Factory Default (Push and Hold Over 5 Sec)

General

Network Processor

- DSP Base

System ROM

- 128MByte NAND Flash

System RAM

- 128Mbyte DDR SDRAM

Power Supply

- DC12V

Power Consumption

- 8 Watts Max.

Connector

- RJ-45 10BaseT/100BaseTX
- 12V DC power jack
- Microphone/Speaker jack
- DIDO
- Reset button
- BNC

Environment

- Operation: Temp: -20°C ~ 50°C Humidity: 20% ~ 85% non-condensing
- Storage: Temp: -15°C ~ 60°C Humidity: 0% ~ 90% non-condensing

SD card slot

- 32G SD/SDHC

Dimension

- HxWxD:208x82x80 mm

System Integration

Software

- CamPro Express 64,CamPro Professional
- Search & Installation- IP Wizard II

Event Triggers

- Motion detection
- External input via DI interface

Motion Detection

- Up to 3 zones

Event handler

- FTP or NAS file upload
- E-mail alert
- HTTP, and TCP notification
- DO (digital output) alarm

UPNP

- Yes

Application Programming Interface

- ONVIF
- Open API for software integration
- SDK

Video Buffer

- Pre- and post- alarm buffering

Alarm Events

- File upload via FTP, NAS, E-mail
- Notification via email, HTTP, and TCP
- External output activation
- Save to SD card

Continuous recording

- Yes

Viewing System

OS

- Windows® XP, Vista, 7

Browser

- IE 6.0 or later, Firefox 2.0 or later, Safari

Cell Phone

- With 3GPP player

Video Player

- VLC, Quick Time, Real Player, Core Player

Ordering Information:

AirLive BU-3025 3-MegaPixel Outdoor 25 meter IR IPCAM