

AFM-VD102SM2Ti

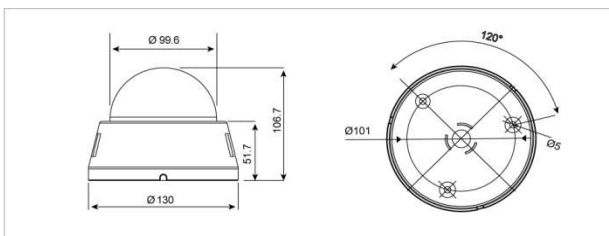
2 Megapixel Indoor Dome IP Camera



Key Features

- 2 Mega pixel 1/2.8" SONY progressive scan CMOS image sensor for excellent image quality (Exmor)
- 4.0mm Megapixel Lens
- Multi Streaming of H.264 and MJPEG
- Supports image resolution up to 1920x1080 (FHD)
- Full HD (1920x1080:1080p) Max. 30fps
- Supports CBR and CVBR modes
- Controllable frame rate
- Privacy Masking up to 8 areas
- Supports WDR, Defog, 2D+3DNR, Smart IR
- Digital PTZ
- 3-Axis
- 12VDC/ IEEE802.3af POE
- Conformant with ONVIF (Profile-S)
- Includes Windows based IP Installer and license-free 16 channel NVR(Network Video Recorder) software

Dimensions (Unit :mm)



IP – Indoor Dome

Specifications

MODEL	AFM-VD102SM2Ti
System	
CPU	32-bit ARM9 RISC CPU up to 432MHz
Flash	128 Mbyte
SDRAM	128 Mbyte
Camera	
Image sensor	2.0 Megapixel 1/2.8" SONY progressive scan CMOS(Exmor)
Total Pixels	1952(H) x 1116(V) 2.18 Megapixel
Effective Pixels	1944(H) x 1104(V) 2.15 Megapixel
S/N Ratio	More than 50dB
Min. Illumination	0.1 Lux
Lens	4mm Megapixel Lens
Video	
Video compression	H.264 High Profile@4.0, MJPEG33mage quality: 3 Steps
Resolutions	Up to 1920 x 1080 (Full HD)
Frame rate	H.264 Up to 30fps with 1920x1080 MJPEG Up to 30fps with VGA resolution
Video streaming	Support multi stream with H.264, MJPEG, Adjustable frame rate, CVBR/CBR in H.264
Pan/Tilt/Zoom	Digital PTZ
Image Setting	Day & Night
	Auto White Balance
	Auto Exposure
	Privacy Mask
	WDR(Low/Middle/High) >120dB
	Defog(On/Off), Smart IR (Off / 0~15)
Video Output (CVBS)	3DNR(On/Off)
	Effect - Color, Sharpness, Mirror/V-Flip, etc.
Video Output (CVBS)	BNCx1, 1Vp-p 75 ohm Composite - Optional
Audio / Alarm (Optional)	
Audio Streaming	Two Way
Audio Compression	G.711
Sample Rate	8KHz
Alarm In/Out (Optional)	In: 1, Out: 1
Network / System Integration	
Security	Password Protection, User access log, HTTPS encryption
Supported protocol	HTTP, HTTPS, FTP, SMTP, UPnP, DNS, DDNS, NTP, RTSP, RTP, TCP, UDP, ICMP, DHCP
Intelligent video	Motion detection up to 1920x1080 with 4x3 blocks
Alarm events	File upload via ftp, E-mail, Notification via email, FTP and TCP
Video buffer	5MB pre-alarm and 180 sec (max) post-alarm
Firmware upgrade	Remote upgrade via network
API	CGI Interface document, ActiveX Interface(ocx/dll) + document)
Physical	
Power Source	DC12V/1.5A, PoE(Power over Ethernet): 802.3af-Optional
Storage	Micro SD
Power Consumption	Max. 5.5W
Net Weight	480g
LED's	Power, Network Connection
Dimension	130mm(Ø) x 106.7mm(H)
General	
Operating Temperature	-10 degree~50 degree Celsius(14F~122F)
Storage Temperature	-20 degree~60 degree Celsius(-4F~140F)
Software	
Included Software	NVR C/S (16 Channel), IP Installer (Windows only)

* Specifications are subject to change without prior notice.