

# ADPRO® FastTrace™ 2X Hybrid

Network Video and Audio Recorder / Transmitter

## Description

The ADPRO FastTrace 2X Hybrid by Xtralis is the latest H.264 single- and multi-site video security system supporting up to 16 analogue and/or IP/Megapixel cameras. It has been designed, developed and manufactured by Xtralis, the leader in video security technologies.

When used in conjunction with the ADPRO VideoCentral Platinum management software, the unique combination of video alarm verification, remote site monitoring and control, and evidential quality recording (H.264), it provides the most flexible multi-site video security system available.

The ADPRO FastTrace 2X Hybrid delivers optimised image quality, efficient bandwidth and hard disk utilisation, in addition to:

- H.264 compression
- Up to 30 ips NTSC/25 ips PAL per camera
- Analogue: CIF/QCIF/2CIF/4CIF – SIF/QSIF/2SIF/4SIF
- Scalable up to 4, 8, 12 or 16 analogue; 4 or 8 analogue and 8 IP or 16 IP (H.264 IP cameras: Axis, Sony 5th generation, Samsung, Sanyo, Arecont, ACTi, Brickcom, Panasonic, Avigilon)
- Fully integrated with ADPRO range of security solutions
- Integrates (optional) on-board video analytics capabilities (up to 16 channels)

## Features

- The ADPRO FastTrace 2X Hybrid utilises H.264 compression technology which optimises bandwidth utilisation while providing the highest quality video with the lowest bandwidth.
- Dual codec (analogue cameras) or use of Dual stream (IP cameras) for independent recording and viewing quality settings (per camera).
- One audio input per video input for synchronised audio recording
- The intuitive web interface gives authorised users remote access to live and recorded video over the network, either multicast or unicast.
- Provides extremely fast searches through large amounts of recorded video with unique post-record metadata motion search capability. Results are presented on a timeline in seconds without large video data transfers across the network.
- The ADPRO FastTrace 2X Hybrid can be managed and configured from the intuitive FastTrace 2 internet browser interface.
- Integrates (optional) on-board video analytics capabilities (up to 16 channels) for indoor loitering detection and outdoor perimeter detection (sterile zone detection).

## Video Alarm Verification

- Live and recorded video transmission, two-way audio, remote camera control and flexible integration capabilities provide full remote site surveillance and control, eliminating the need for on-site guards.
- Event-based video transmission pushes video on alarm from the remote site to the ADPRO VideoCentral Platinum remote video and alarm management software and ADPRO M3000 command and control software.
- Rapid assessment of video alarm images enables the cause of alarms to be viewed quickly and efficiently, allowing for real time intervention as necessary and minimising nuisance alarm responses.
- Use ADPRO FastTrace 2X Hybrid and the ADPRO VideoCentral Platinum remote video and alarm management software or ADPRO M3000 command and control software for centralised management of multiple remote sites to improve efficiency and reduce personnel costs.
- An SDK interface is available to support direct integration to 3rd party receiving software. See the ADPRO Advantage Programme for further information.



## Key Benefits

- H.264 best-in-class video compression, highest quality video with lowest bandwidth
- Dual codec (analogue cameras) or use of Dual stream (IP cameras) for totally independent recording and viewing quality settings (per camera)
- Resolutions:
  - Analogue (PAL/NTSC): CIF/SIF, QCIF/QSIF, 2CIF/2SIF, 4CIF/4SIF
  - IP: up to HD/MP resolution (depending on the camera)
- Intuitive Web interface for viewing live or recorded video and system configuration
- Automatic video alarm transmission to ADPRO VideoCentral Platinum and ADPRO M3000 software
- CMS control override function
- Two-way audio capability, one bi-directional half-duplex audio channel available per video channel with optional audio switcher
- Extremely fast post-record metadata motion search capability
- 10 custom settings for live viewing
- Local on-board input/outputs and extended input/outputs with up to 128 total input/outputs via optional Ethernet PoE modules
- Camera supervision for contrast, no video signal and camera tamper (moved or defocused)
- Alarm transmission capability:
  - Primary IP/3G (optional\*)
  - Backup 3G (optional\*)
  - Support for Dynamic IP addresses (DNS)
- Communication channel supervision via automatic Site Pulse watchdog signal
- Time synchronisation via NTP time servers
- Integrated PTZ telemetry support with PTZ presets on alarm (RS485, via Coax)
- Small desktop case - 19" rack mount possibility
- SDK to interface to 3rd party receiving software
- High Level Interface to ADPRO Presidium intelligent video analytics platform
- On-board optional video analytics extensions for:
  - Indoor Loitering Detection: detects loitering persons, even when they remain static for a long time
  - Outdoor Perimeter Detection: designed for outdoor sterile zone monitoring

\* 3G-modem not included - For more information, please contact your Xtralis representative.

# ADPRO® FastTrace™ 2X Hybrid

Network Video and Audio Recorder / Transmitter

## Specifications

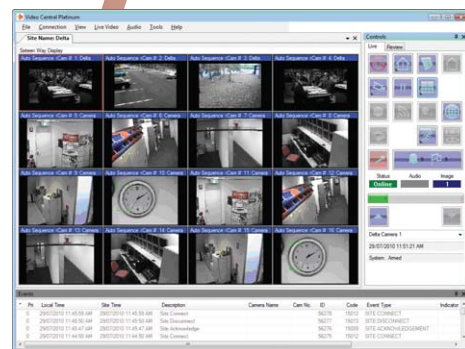
<b>Video Input</b>	4, 8, 12 or 16 analogue; 4 or 8 analogue and 8 IP or 16 IP (H.264 IP cameras: Axis, Sony 5th generation, Samsung, Sanyo, Arecont, ACTi, Brickcom, Panasonic, Avigilon). The latest list of compatible IP cameras and their respective integrated functionality is available on our website.
<b>Video Output</b>	SVGA – Multiple matrix type views
<b>Video Compression</b>	H.264
<b>Video Resolution</b>	Analogue (PAL/NTSC): CIF/SIF, QCIF/QSIF, 2CIF/2SIF, 4CIF/4SIF IP: up to HD/MP resolution (depending on camera)
<b>Images/Second</b>	Analogue/IP: PAL/NTSC: up to 25/30 ips
<b>Bandwidth Consumption</b>	6 ips CIF, 70 kb/sec; 12 ips 4CIF, 400 kb/sec
<b>Bandwidth Management</b>	Configurable variable or constant bitrate Configurable bandwidth limiter
<b>Hard Disks</b>	500 GB up to 8 TB onboard storage. Disk supervision and HDD Information page
<b>Audio Input</b>	1 per camera
<b>Audio Output</b>	Standard 1 line level output, Optional: up to 1 per camera via audio switcher(s)
<b>Motion Detection</b>	4 zones adjustable per camera
<b>System</b>	PC platform - Linux OS
<b>Audio Compression</b>	OggVorbis Codec 16 Kbps
<b>Command Inputs</b>	On the box (max. 40, depending on the model) or via Ethernet I/O module with PoE (up to 128)
<b>Relay Outputs</b>	On the box (max. 16, depending on the model) or via Ethernet I/O module with PoE (up to 128)
<b>Network Protocols</b>	TCP, UDP, TELNET, HTTP, SMTP, RTSP, RTP, NTP
<b>Application Update</b>	Local and remote
<b>Web Server</b>	Integrated
<b>Com Ports</b>	USB-RS232 for serial comms USB-RS232/RS485 (or Basic on the box I/O-RS485 port) for PTZ control
<b>Ethernet</b>	10/100/1000 Base-T, auto detection, full duplex, RJ45
<b>Recording Support</b>	Up to 4 SATA hard disks per system – HDD type: 500 GB to 2 TB – max. 8 TB per system
<b>Recording Type</b>	Continuous, Event, Input, Motion Detection, Alarm Over IP
<b>Remote Visualisation</b>	Web client; Windows XP, Vista, Windows 7, Server 2003
<b>PTZ Cameras</b>	Via RS485 or via coax, extensive list available
<b>Management</b>	Web browser interface, ADPRO VideoCentral Platinum and ADPRO M3000
<b>Power Supply</b>	90-260 VAC, 50/60 Hz
<b>Operating Temperature</b>	5 – 40 °C Ethernet I/O module : 0 – 40 °C
<b>Humidity</b>	20 – 93 % rh – non-condensing Ethernet I/O module : <= 93 % rh – non-condensing
<b>Ordering Information</b>	<b>Basic</b> <ul style="list-style-type: none"> <li>Per 4 or 8 analogue and/or per 8 IP video inputs</li> <li>Model: 19" rack</li> </ul> <b>Options (ordering with the basic system)</b> <ul style="list-style-type: none"> <li>Basic on the box I/O card (8 monitored inputs, 4 relay Outputs)</li> <li>Extension on the box I/O card (12 monitored inputs, 4 relay outputs)</li> <li>Internal Hard Disk(s)</li> <li>Audio output switcher, interface for PTZ over coax.</li> <li>USB-RS232 cable, USB-RS485 cable.</li> </ul>
<b>Warranty</b>	Twenty four (24) months on all components

## ADPRO FastTrace 2X Hybrid - 19 inch Rack

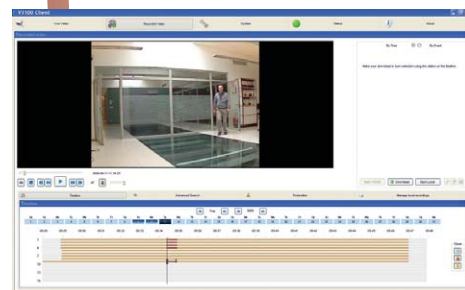


<b>Dimensions</b>	W: 445 mm (17.52") H: 132 mm (5.20") L: 300 mm (11.8")
-------------------	--

## ADPRO VideoCentral Platinum Live Multi-screen



## Web-Browser Interface



## Ethernet I/O with PoE

Din Rail installation  
4...16 digital inputs  
4...16 relay outputs  
NC/NO  
3 LEDs for operational status of ADPRO FastTrace 2X Hybrid  
Watchdog and sounder



www.xtralis.com

The Americas +1 781 740 2223 Asia +852 2916 8876 Australia and New Zealand +61 3 9936 7000  
UK and Europe +44 1442 242 330 Middle East +962 6 588 5622

The contents of this document are provided on an "as is" basis. No representation or warranty (either express or implied) is made as to the completeness, accuracy or reliability of the contents of this document. The manufacturer reserves the right to change designs or specifications without obligation and without further notice. Except as otherwise provided, all warranties, express or implied, including without limitation any implied warranties of merchantability and fitness for a particular purpose are expressly excluded.  
This document includes registered and unregistered trademarks. All trademarks displayed are the trademarks of their respective owners. Your use of this document does not constitute or create a licence or any other right to use the name and/or trademark and/or label.  
This document is subject to copyright owned by Xtralis AG ("Xtralis"). You agree not to copy, communicate to the public, adapt, distribute, transfer, sell, modify or publish any contents of this document without the express prior written consent of Xtralis.  
Doc. no. 21142\_01

**ADPRO®**  
by **xtralis™**