

# Armlock® 281

Direct-Pull Magnet

ATS CE



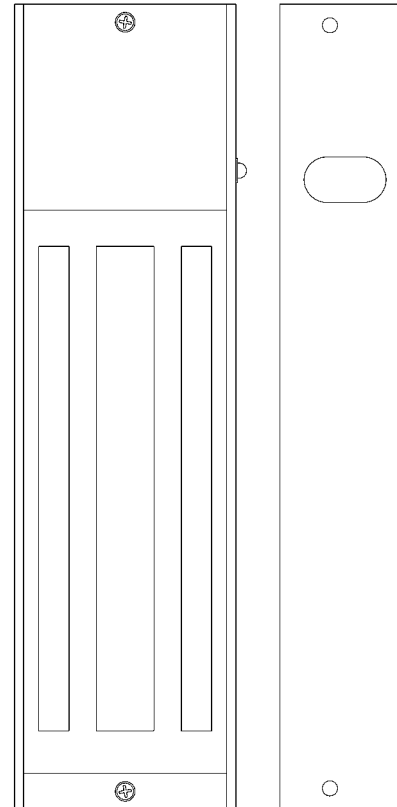
## Function

To facilitate remote access and exit control of any aluminium, timber or steel door. The Armlock® 280 Series features clean aesthetics whilst maintaining a magnetic holding force of at least 510kg (1120lbs). Offering durability and low maintenance, Armlock® 280 Series Magnetic Locks at all times provide positive fail-safe operation (unless power supply continued during power failure by means of battery back-up). The 281 has a security pin feature to help prevent unauthorised removal of the magnet from the door frame fixing plate.

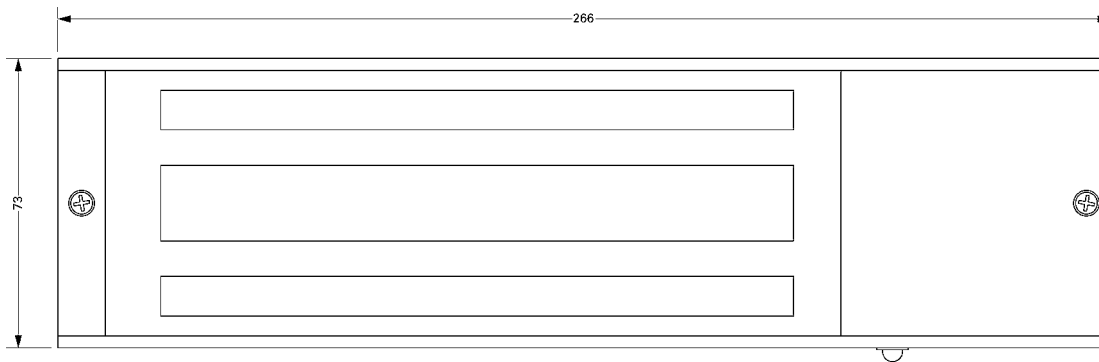
**Note:** For maximum security specify an MS® Deadlock in conjunction with the direct-pull magnet.

## Specifications

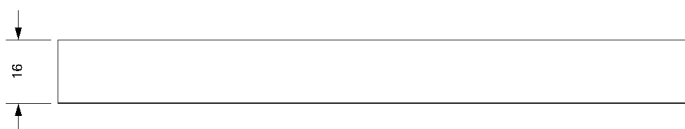
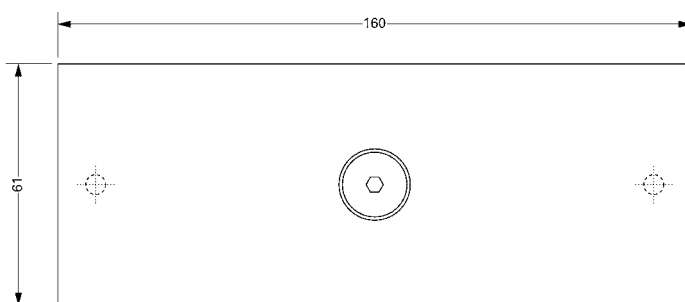
Single Magnet:	40mm x 266mm x 73mm.
Double Magnet:	40mm x 532mm x 73mm.
Armature:	16mm x 160mm x 61mm. (2 no. for double magnet).
Nominal Holding Force:	510kg (1120lbs).
Supply Voltage:	12 or 24vDC (±15%).
Nominal Current:	480mA @ 12vDC, 240mA @ 24vDC. Dual coil. Built-in voltage spike suppressor.
Monitoring:	Relay dry contact with LED.
Door Gap:	Maximum 3mm (1/8").
Positioning:	Outward opening - surface mounted to door frame header. Inward opening - door frame header using 'L' & 'Z' brackets.
Magnet Housing:	Brushed satin aluminium.
Note:	To achieve immediate release, it is important that the release switch breaks the circuit on the positive supply to the magnet.



## Dimensions



**Armlock® 281-005**



**Armature for Armlock 280® Series Magnets**

## Ordering Codes

- 281-000** Surface mounted single direct-pull magnet, 12/24vDC, non-monitored, suitable for timber or metal door applications.
- 281-200** Surface mounted double direct-pull magnet, 12/24vDC, non-monitored, suitable for timber or metal door applications.
- 281-005** Surface mounted single direct-pull magnet, 12/24vDC, monitored, suitable for timber or metal door applications.
- 281-205** Surface mounted double direct-pull magnet, 12/24vDC, monitored, suitable for timber or metal door applications.
- 268-600** Armlock® 260/280 Series glass armature bracket

### Parts

- 281-300** Spare armature plate only for 280 Series.

## Related Hardware

'L' and 'Z' Brackets (p34, 36) ~ 4591M & 999M Monitored Paddle Handle & Exit Device Switching Accessories (p48)

RiteKey Keypad (p54) ~ Push-to-Exit Button (p56) ~ Power Supply Unit (p58)