

AXIS Camera Station

Comprehensive video management software for monitoring, recording, playback and event management



Get the full picture

Endless video management possibilities, wherever you are...

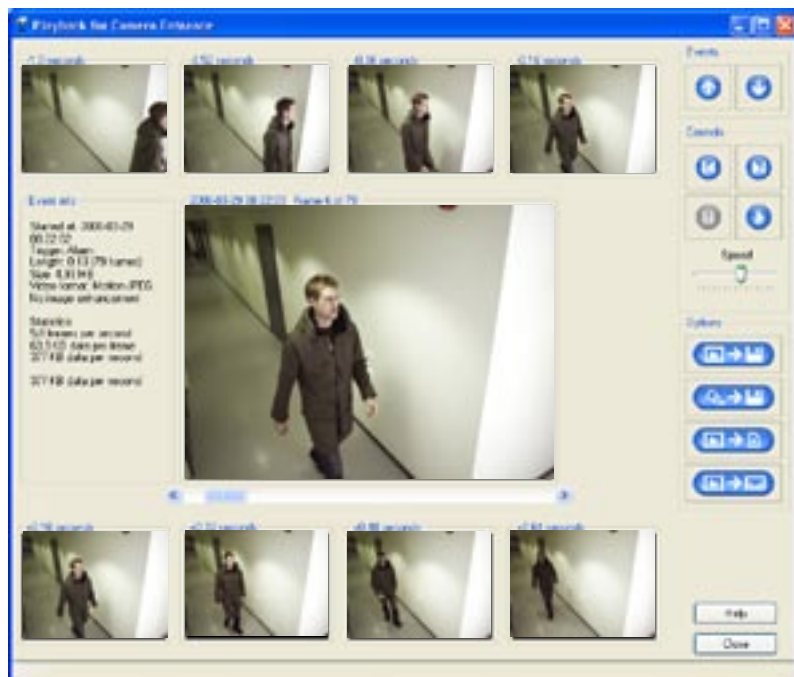
AXIS Camera Station is a comprehensive video management software that is specially designed for Axis network cameras and video servers. From remote video monitoring and recording to advanced event management, from superior image quality to effective evidence, AXIS Camera Station offers advanced capabilities for your video surveillance needs.

High quality recording

With AXIS Camera Station installed on your Windows PC, you can monitor your cameras, and at the same time, record high quality, digital video either continuously or on schedule, alarm and/or motion detection. The software's motion detection feature works by retrieving an image several times every second and comparing the differences in a specified area of the image. AXIS Camera Station supports recordings in both Motion-JPEG and MPEG-4 for optimized quality and bandwidth. Digital recordings are saved directly onto the hard disk(s) of the local PC server running AXIS Camera Station.

Remote access, and multi-view playback

AXIS Camera Station offers easy ways to search for recorded events. In addition, with the multi-view playback feature, users can view simultaneous recordings from different cameras and get a comprehensive picture of an event. Remote viewing and playback are possible with the use of a web browser or with the AXIS Camera Station's Windows client.



Playback events frame by frame in variable speed. Print, mail and save events or export them in AVI or ASF format for later use or storage. You can also search for recordings with motion in a selected area of an image.

- > View and record live video from multiple cameras simultaneously
- > Multiple recording modes: continuous, scheduled, on alarm and/or motion detection
- > High quality recordings in MPEG-4 and Motion JPEG
- > Optional* AXIS Image Enhancer component for improving image clarity in poor visibility conditions such as fog, smoke, rain and snow
- > No recording limitation in software
- > Multiple search functions for recorded events
- > Audit log
- > Remote access via web browser or Windows client
- > Control of PTZ and dome cameras
- > Alarm alert functions (beep and e-mail)
- > Full duplex, real-time audio support without recording
- > Multilingual support for English, French, German, Italian, Russian and Spanish

*Add-on functionality that is integrated into AXIS Camera Station (version 1.20 and higher) and activated with a separate license key. License keys can be purchased in packages of 1 and 5 from your nearest reseller. One AXIS Image Enhancer license is required per video channel.

A standard web browser such as Internet Explorer can be used on client workstations to view cameras and recordings remotely from anywhere with Internet access.

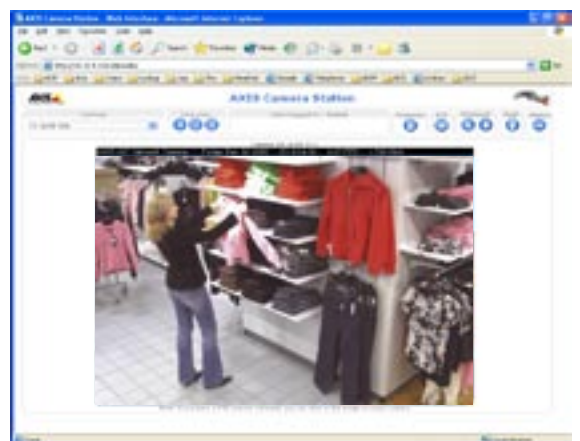


Image enhancement capabilities

With AXIS Image Enhancer, an add-on software component for AXIS Camera Station, you can improve the quality of images taken in conditions such as fog, smoke, rain and snow. Applied to live or recorded color video, it delivers real-time results and displays visual details that would otherwise have been difficult to see under poor visibility conditions.

Video is shown without distorting elements, making it the ideal solution for any situation where video quality can be affected by adverse conditions and crucial information can be lost.

The unique AXIS Image Enhancer functionality within the AXIS Camera Station software is activated with a separate license key. It works with color digital or analog video sources, operates with all Axis network cameras and video servers, and supports full frame rate for live viewing.



Example of image improvement using AXIS Image Enhancer

- > Improves image quality in fog, smoke, rain and snow; extends visibility in harbors, airports, roads and tunnels
- > Superior results compared with brightness/contrast adjustments; optimal image enhancement is achieved with video taken between dawn and dusk
- > For use with live or recorded color video
- > Ideal for outdoor cameras

AXIS Camera Station or DVRs?

Compared with DVRs, AXIS Camera Station combined with network cameras offers many advantages:

- > **Open solution**
AXIS Camera Station is an open video management software solution. It is based on standard hardware components, not proprietary equipment like DVRs.
- > **Scalability**
Cameras and licenses can easily be added one by one and the system hardware can be expanded to meet increased performance requirements. You can choose exactly what you need today, and scale the system at any time to meet your growing needs.
- > **Intelligence at camera level**
You can use the computer power in the network camera for motion detection to offload the recording server.
- > **Image quality**
Using progressive scan and megapixel resolution, network camera technology has surpassed the image quality of analog cameras used with DVRs.
- > **Two-way audio**
As audio is transported on the same network cable, you can integrate it with your IP-Surveillance system and hear and speak through the network.
- > **Cost-efficient infrastructure**
Most facilities are already wired with network cables, so no additional wiring is required with an IP-Surveillance solution based on AXIS Camera Station and network cameras. Using standard PC server hardware for video recording and storage rather than proprietary equipment such as DVRs radically reduces management and equipment costs, particularly for larger systems where storage and servers are a significant portion of the total solution cost. In addition, most network cameras offer a Power over Ethernet (PoE) option, which allows you to power cameras through the network and eliminate the wiring needed for electrical outlets.
- > **Built on standard components**
Standard PC servers and storage architecture from any vendor can be used, which reduces wait times and simplifies upgrades and replacements.

Axis Surveillance Bundles: an easy way to get started!

The Axis Surveillance Bundles consist of four Axis network cameras and one AXIS Camera Station software with licenses for 4 network cameras/video server channels. They can be easily expanded with additional cameras and AXIS Camera Station licences.



PREVENT, IMPROVE, VERIFY, SIMPLIFY

The need for comprehensive network video surveillance solutions in retail shops, production facilities, office premises, service locations, hotels, schools, and many other kinds of public venues continues to experience solid growth. AXIS Camera Station, combined with Axis video products, helps you in many ways:

- > **Prevent** shoplifting and thefts
- > **Improve** staff safety and property security
- > Add capabilities such as customer monitoring and site optimization
- > **Verify** intruder alarms and minimize false alarms
- > Clearly see anything, anytime, from wherever you are
- > Provide effective evidence

And **Simplify**...

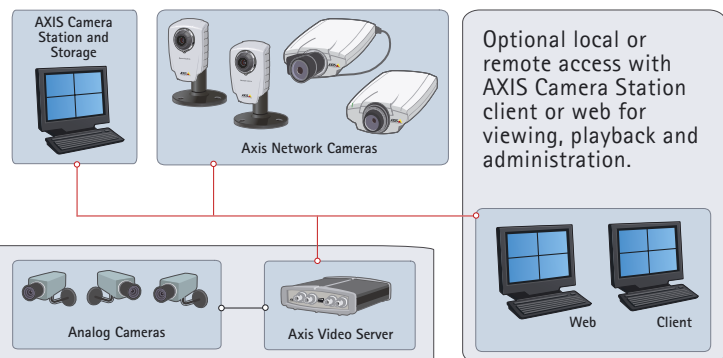
The entire system is based on your existing network infrastructure – technology you are used to.

Installation scenarios

Solutions for every situation and every need

Scenario 1

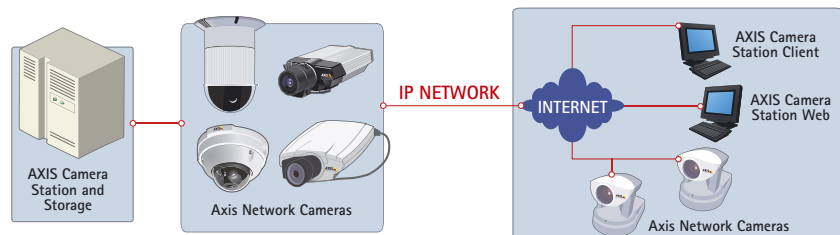
AXIS Camera Station and Axis network cameras are located on the same local network. A typical environment for this type of installation is a small office or retail shop. Viewing, playback and administration are done directly in AXIS Camera Station.



The same functionality is achieved with your existing CCTV system, with analog cameras connected to an Axis video server.

Scenario 2

Typical scenarios are schools or retail stores with different locations but one common surveillance system, which can be remotely accessed from anywhere on the Internet by a supervisor or a contracted security company.



In terms of capability, scalability, cost-effectiveness, ease of installation, image quality, network integration, and simple peace of mind, you can do no better.

| AXIS Camera Station Specifications | | | |
|------------------------------------|--------------------------------------------------------------------------------------------------------------------------------------------------------------------------------------------------------------|---------------------------------------------------------------------------|------------------------------------------------------------------------------------------------------------------------------------------------------------------------------------------------------------------------------------------------------------------------------------------------------------------------------------------------------------------------------------------------------------------------------|
| Compatibility | Compatible with AXIS 2xx series network video products running firmware 4.03 or higher and 2xxx series running firmware 2.34 or higher. Visit www.axis.com for a full list | Logs | All events, filter by day and/or camera. Audit log-filter by day, camera, event and user |
| Recording frame rate | Total frame rate > 500 fps on recommended hardware | Languages | English, French, German, Italian, Russian, Spanish |
| Recording storage | Unlimited recording database, only limited by disk space Duration can be limited per camera to fit local legal requirements. Default 5 days | Installation | Auto search and detection of cameras |
| Video channels | Up to 25 | Licenses | AXIS Camera Station base licenses for 4 or 10 cameras/channels to be used on one single dedicated PC/server. Additional licenses in +1 or +5 up to 25 cameras/channels. One year upgrade license included in 4/10 base license. Future upgrades require one upgrade license per year. 30-day demo can be upgraded to licensed version |
| Video compression | Recording in Motion JPEG or MPEG-4 Live view in Motion JPEG or MPEG-2/4 | License registration | Register automatically over the Internet or manually at www.axis.com within a five day grace period |
| Resolutions | Up to 1280x1024 (resolutions depend on the connected Axis video product). Compression levels: 5 | Minimum system requirements | Windows XP Professional SP2, 2000 (SP4), 2003 Server (SP1), Internet Explorer 6.0, or later, DirectX 9.0c or later (for MPEG-2/4) TCP/IP support Internet Information Services (IIS) – for Web client Microsoft .NET runtime environment (incl. in installation package) |
| Camera live view | Live view of up to 16 cameras simultaneously in 4, 6, 9, 10, 13, 16-split views, full screen 4, 9, 16-split view Single camera pop-up User-defined split views | Minimum hardware requirements for a 4 camera system | Pentium 4, 2 GHz processor, CD-drive 512 MB RAM Hard disk: 1 GB for installation NTFS file system XGA (1024 x 768) or higher resolution monitor AGP graphic card, Direct Draw (for MPEG-2/4), with 32MB or more memory Microsoft mouse or compatible pointing device 100 Mbit Ethernet For additional hardware recommendations, visit www.axis.com/techsup |
| Live sequence mode | Multiple camera sequence (patrolling) | Minimum hardware requirements for a 25 camera system | Dual XEON 3 GHz, 1024 MB RAM, multiple SCSI disks 1000 Mbit Ethernet backbone (separate hard disk for OS and recordings) |
| Audio | Full duplex real time audio support without recording | Recommended hard disk configuration | At 5 fps in CIF up to 10 cameras per hard disk At 25 fps in CIF up to 3–4 cameras per hard disk |
| PTZ support | Control of PTZ cameras and preset positions | Minimum requirements for AXIS Camera Station Client and remote web access | Pentium 4, 1 GHz processor 256 MB RAM XGA (1024 x 768) or higher resolution monitor AGP graphic card, Direct Draw (for MPEG-2/4), with 32MB or more memory Windows XP Professional SP2, 2000 (SP4), 2003 Server (SP1), Internet Explorer 6.0, or later, DirectX 9.0c or later (for MPEG-2/4 viewing) TCP/IP support Microsoft .NET runtime environment for client (included in installations package) |
| Alarm recording | Events triggered by motion detection, external input or according to a schedule Speed up recording on motion or on I/O alarm | Supported protocols | IP, HTTP, TCP, ICMP, RTSP, RTP, SMTP, FTP, DNS |
| Alarm recording frame rate | From 1 image per minute up to 60 fps per camera Configurable pre- and post alarm buffering | Included accessories | Installation Guide in English, French, Italian, German and Spanish, CD with software and User's Manual in English License key |
| Alarm notification | Visual indication, pop-up live image, e-mail and event log | Applications (included) | AXIS Camera Station Client (for Windows) for remote viewing, playback and administration. AXIS Camera Station Web interface for remote viewing and playback |
| Motion detection | Advanced motion detection with exclude filter for image areas of no interest. Different day and night settings Camera-based motion detection, option to save on bandwidth "No motion" detection | Accessories (not included) | AXIS Image Enhancer for improved image quality in fog, smoke, rain and snow |
| Scheduled recordings | Recordings can be scheduled per camera, be set for continuous upload, per weekday or specific dates | | |
| Recording tampering | Warnings on deleted or altered images in recorded events | | |
| Archiving | Recordings can be moved daily to remote storage | | |
| Playback | Controllable speed or frame by frame | | |
| Synchronized playback | Playback of video synchronized in time from up to 4 video sources simultaneously | | |
| Search for recordings | Search for recordings based on date, time or motion Search for motion in continuous recordings | | |
| Video clip export | Exports single JPEG images to file, printer or e-mail Exports video sequences in AVI or ASF format | | |
| System alarm notification | Notification in event log and via e-mail for: alarm, no signal from camera, full hard disk and archiving failure | | |
| Input/output control | Advanced control panel for cameras' digital inputs/outputs | | |
| Remote access | Web client for remote viewing and playback AXIS Camera Station Client (for Windows) included for remote viewing, playback and administration | | |
| Security | Multiple user access levels with password protection Local or Windows domain users (Active directory) | | |

| AXIS Image Enhancer Specifications | | | |
|------------------------------------|-----------------------------------------------------------------------------------------------------------------------------------------------------|-------------------|-----------------------------------------------------------------------------------------------------|
| Compatibility | Compatible with all Axis network video products except MPEG-2 products. Optimal enhancement is achieved on color video taken between dawn and dusk. | Video clip export | Enhancement can be applied during export |
| Camera live view | Enhancement of live view in full frame rate of all channels | Installation | Included in AXIS Camera Station installation and unlocked with license keys |
| Playback | Enhancement during playback of recordings (must have been active during recording) | Licenses | One license key is required per video channel. License keys can be purchased in packages of 1 or 5. |

About Axis

Axis increases the value of network solutions. The company is an innovative market leader in network video and print servers. Axis' products and solutions are focused on applications such as security surveillance, remote monitoring and document management. The products are based on in-house developed chip technology, which is also sold to third parties.

Axis was founded in 1984 and is listed on the Stockholmsbörsen (XSSE: AXIS) Attract 40-list. Axis operates globally with offices in 16 countries and in cooperation with distributors, system integrators and OEM partners in 70 countries. Markets outside Sweden account for more than 95% of sales. Information about Axis can be found at www.axis.com

www.axis.com