



TECH NOTE

VICON TECHNICAL SERVICES GROUP

Subject: Configuration Profile Backup
Product: V1500CPU
Number: 1400-0001-98-00
Date: 8/30/06

The purpose of this Technical Note is to document the steps necessary to make a backup copy of a V1500 configuration profile and to save it to a CD for archive purposes.

This procedure applies to all V1500CPU systems that use the MicroSoft™ WindowsXP® embedded operating system. The procedure for older systems using the MicroSoft™ WindowsNT® system are similar but the appearance of the screen displays may vary slightly.

At the V1500CPU, the V1500 Application should normally be running. The V1500 Configurator may or may not be running at the time. Minimize (*DO NOT CLOSE*) both applications using the minimize buttons.



Figure 1
V1500 Application Screen

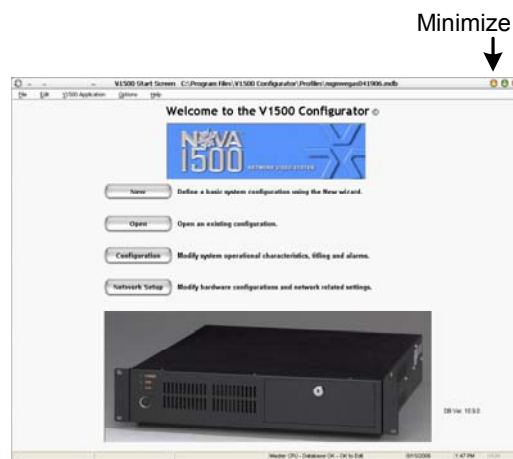


Figure 2
V1500 Configurator Screen

After minimizing both applications, the Windows desktop is displayed (Figure 3).

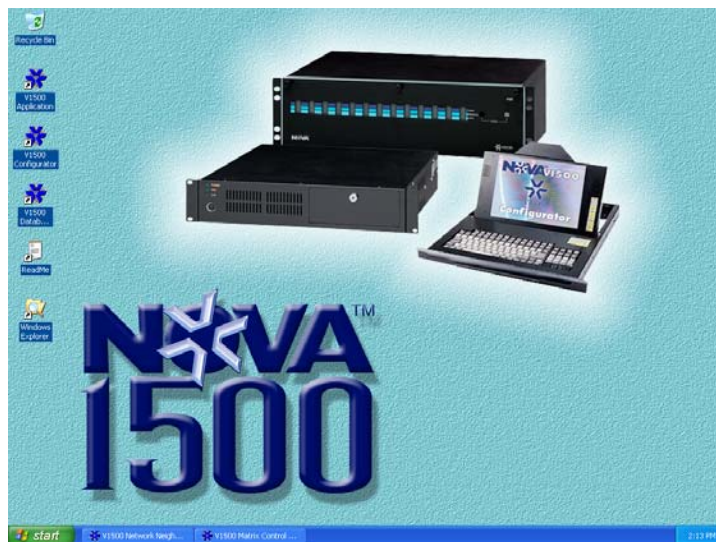


Figure 3

Part 1 – Copying the file to another folder:

1. From the desktop, open Windows Explorer (tip: hold the Windows™ key down and press “E”) and navigate to:
C:\Program Files\V1500 Configurator\Profiles as shown in Figure 4.

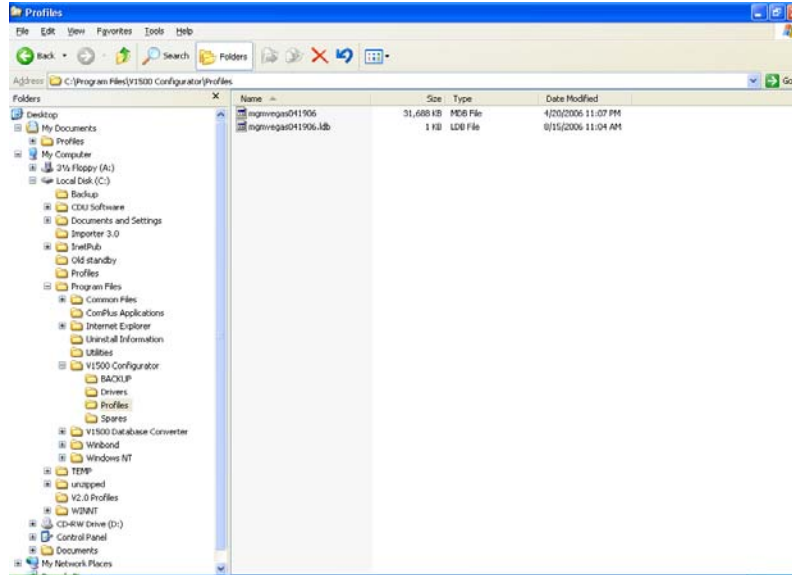


Figure 4

2. If the V1500 application is running, there will be at least two files in the profiles folder. Both will have the name of the configuration. The larger of the two will have an “MDB” file extension and the other will have an “LDB” extension. There may be other files in the folder but only the configuration in use will have another file with the same name but with the LDB extension.
3. Right-click the file with the MDB extension and select *Copy*. Place the mouse pointer on the *My Documents* folder, right-click the mouse and select *Paste* to save a copy of the configuration in the *My Documents* folder.
4. Once the file has been saved to *My Documents*, the file name can be changed to add a date or some other means of differentiating it from other files. Right-click the file name and select *Rename* from the list. Type in the new file name and press *Enter*.
5. Every time the configuration file is updated or changed, a backup copy of the file can be saved in this manner.

Part 2 – Copying the file to a CD:

1. From Windows Explorer, navigate to the folder where the file is saved, right-click the file name and select *Copy*. Place the mouse pointer on the CD-RW drive letter or icon, right-click the mouse and select *Paste*.

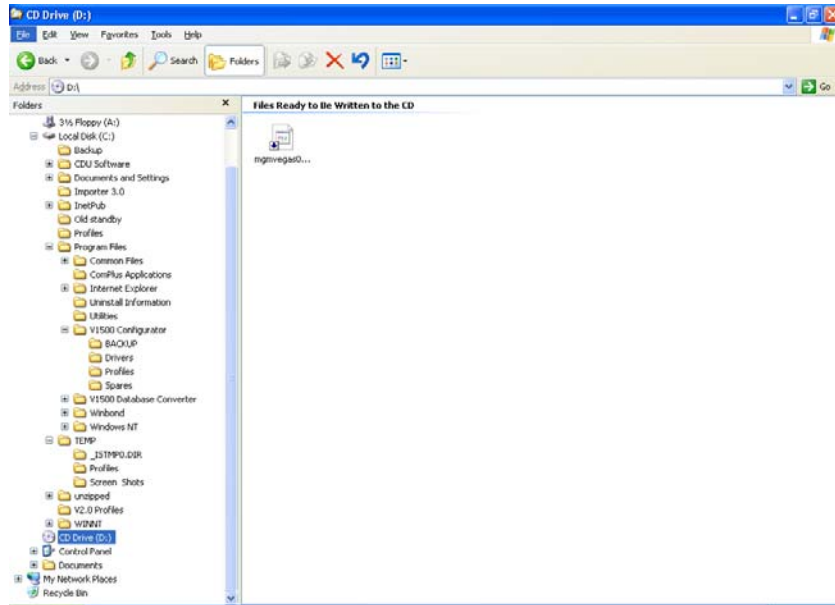


Figure 5

2. Left-click on the CD-RW drive in Windows Explorer. Then, Click on *File* at the top of the screen and select “*Write these files to CD*”. The screen shown in Figure 6 will open. Type in a name for the CD and / or click *Next*.



Figure 6

3. The file will start copying to the CD. When the recording process is complete, the CD tray will eject and the screen in Figure 7 will appear. Click *Finish*.



Figure 8

4. Return the V1500CPU to its normal display mode.