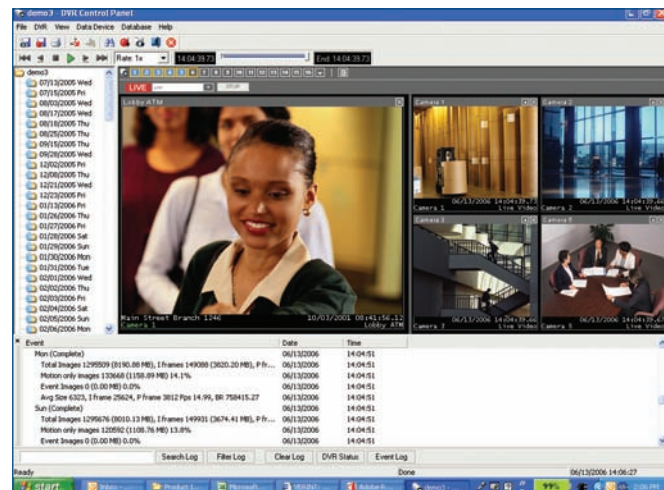


# Nextiva NetDVR II



**With automatic sizing and tiling of dockable windows plus advanced event search capability, the NetDVR II full-featured GUI is intuitive and easy to use.**

## Verint. Powering Actionable Intelligence.®

Verint Systems (NASDAQ: VRNT) is a leading global provider of analytic software-based solutions for communications interception, networked video, and business intelligence. Verint solutions transform voice, video, and text into *actionable intelligence* — timely, mission-critical insights for achieving strategic goals.

Since 1994, Verint has been committed to developing innovative solutions that help our customers achieve their important objectives. Today, more than 1000 organizations in over 50 countries use Verint's actionable intelligence solutions to enhance security, boost operational efficiency, and fuel profitability.

By providing this document, Verint Systems Inc. is not making any representations regarding the correctness or completeness of its contents and reserves the right to alter this document at any time without notice.

All marks referenced herein with the ® or TM symbol are registered trademarks or trademarks of Verint Systems Inc. or its subsidiaries. All rights reserved. All other marks are trademarks of their respective owners.

© 2006 Verint Systems Inc. All rights reserved.

Email: [NETDVRsales@verint.com](mailto:NETDVRsales@verint.com)  
 Phone: +1-301-483-8930  
 Or on the web at: [www.verint.com/videosolutions](http://www.verint.com/videosolutions)  
 9101 Guilford Road, Columbia, MD 21046 USA

July 2006

## Efficient, Secure, Feature Rich

- Individual camera frame rate and resolution with real-time transaction based recording
- Frame rate up to 300 FPS
- SD flash card for DVR properties
- Enhanced video compression with network packet throttling
- State-of-the-art Serial ATA drives
- Stable, embedded operating system
- Nextiva Op-Center DVR Management Suite compatible

## Enhanced Connectivity

- Dual network ports
- DHCP support
- Five USB 2.0 ports
- LAN/modem connectivity

## Enhanced Monitoring Capabilities

- Spot monitor for guard tour standard
- Multiplexed output (optional)

## Video Portability

- Front-panel USB port for video image transfer to memory stick
- Remote transfer of DVR executable file to memory stick
- Single, password-protected video evidence file format



# Nextiva NetDVR II

## A New Standard in Actionable Intelligence

Verint® launches the next generation of enterprise-class DVRs with Nextiva™ NetDVR™ II.

At up to 300 FPS, NetDVR II delivers superior performance on a highly scalable, embedded platform.

Built on Verint expertise from more than 50,000 successful installations, NetDVR II delivers the actionable intelligence that organizations need to reduce liability and loss, address claims, and create a safe environment.



Transforming Video Into Value

# Nextiva NetDVR II

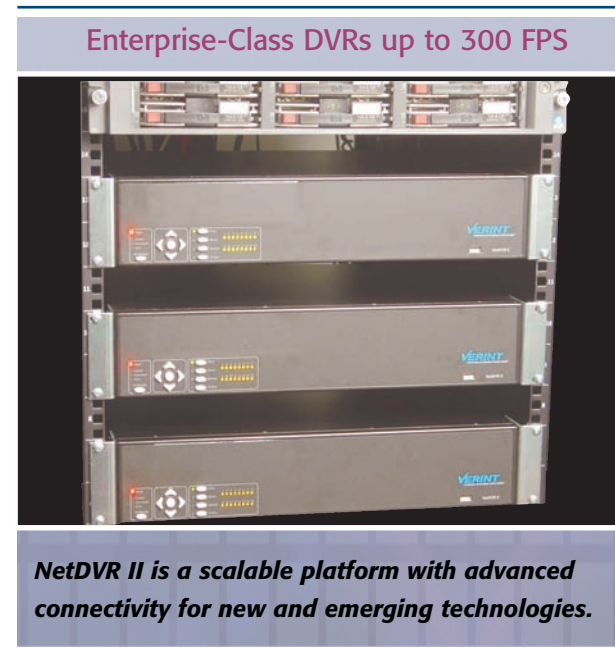
Verint launches the next generation of enterprise-class DVRs with NetDVR II.

NetDVR II features:

- Stable, embedded operating system supporting advanced video processing and exclusive short and long term recording modes
- More efficient video compression and selectable frame rate and resolution per camera, optimizing storage on state-of-the-art Serial ATA drives
- An SD Flash Card that stores DVR properties, simplifying service, and a front-panel USB port to facilitate memory stick collection of video for evidence
- Powerful, real-time, IP-based data and alarm interfaces with the capability to leverage state-of-the-art video analytic technologies for pinpointing the most significant video images

*Plus the reliability and robust functionality that you have come to expect from Verint NetDVR solutions.*

**Nextiva NetDVR II provides a platform for growth, with outstanding functionality, enhanced flexibility, and long-term value.**



**With a front-panel USB port, video can be easily transferred to a memory stick.**

**The SR-16 is capable of simultaneous interception of serial and IP data streams.**



# A Platform for Growth

## Frame Rate

- 60 FPS (standard)
- 120 FPS (optional)
- 300 FPS (optional)

## Media

- 250GB – 2TB video storage
- Serial ATA drives
- RAID-1 disk mirroring (optional)
- Removable hard drive (optional)

## User Interface Software

- Easy-to-use graphical interface
- Synchronized audio/video playback
- Remote access for image retrieval and system configuration
- Automatic tiling and sizing of 16 dockable camera windows
- Easily search and find specific images by time, date, number, or event
- Programmable expiration of general, motion, and event-based recording
- Live view
- Simultaneous recording during live view, event storage, or image retrieval
- Fully programmable events and scheduling
- Compatible with Windows 2000 and above

## Compression Format

- SM-4 (MPEG-4)
- Unalterable Image Format (UIF)

## Image Quality

- User-defined compression (high/medium/low)
- 320 x 240 resolution (standard)
- 640 x 240 resolution (optional)
- 640 x 480 resolution (optional)

## Motion Detection

- Motion-Prompted Archiving (MPA)

## Data Recording

- Digitized data capture
- Dockable data display window

## Retrieval Transmission Options

- Ethernet 10/100 Base T
- Dial-up modem (optional)
- RS 232 local access

## Enterprise Management Software

- Nextiva Op-Center™ DVR Management Suite compatible

## Video Inputs

- 16 cameras
- NTSC/PAL

## Data Input

- Dual RS 232 data inputs
- SR-16 interface for simultaneous IP/serial data capture

## Dual Monitor Outputs

- Switched analog video output
- Multiplexed analog video output (optional)
- Local DVR programming display (optional)

## Alarm/Event Contacts

- 16 user configurable input contacts
- 2 user configurable output contacts

## Connectivity Options

- 5 USB ports (4 back panel, 1 front panel)
- Dual Ethernet 10/100 ports

## Physical

- 16.75" w x 12" D x 3.5" H (2U)
- 14 lbs.
- 40-120° operating environment
- Wall, rack, or shelf mount

## Electrical

- 100-120VAC/200-240VAC



**An externally accessible SD flash card for DVR properties facilitates service and future application integration.**