

Milestone XProtect Professional:

high performance IP video surveillance with a full feature set.

XProtect Professional is the right product for medium to large installations wanting robust surveillance software with full functions for advanced management, flexible scheduling, fast searching and analysis.

Controlling up to 36 cameras per server, XProtect Professional interfaces with standard IP video and computer hardware equipment – efficient to install and easily scalable for future expansion.

Three system components – all in one solution:

THE ADMINISTRATOR

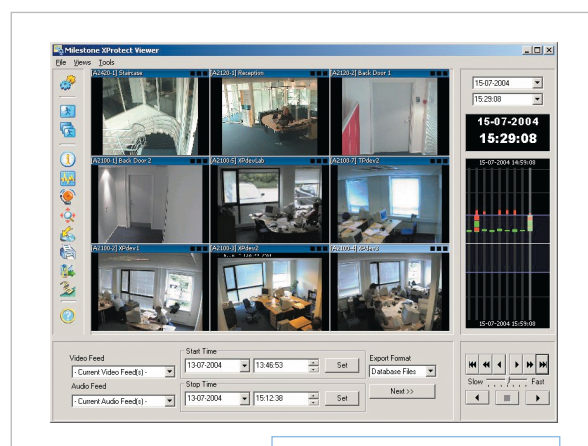
In the Administrator module, you set up all your network cameras, video servers and users of the system. In the friendly interface you define how many camera views you want to see and their scheduling, archiving preferences, e-mail or SMS alerting, and user rights.

THE MONITOR

The Monitor lets you watch all live camera streams simultaneously from a central location for up to 36 cameras per server. Recordings can be played back in views of up to 9 cameras at the same time.

THE REMOTE ACCESS SERVER

XProtect Professional has a built-in web server for full remote access to alarm information, recorded images and live video. Select different views of one or four cameras each for simultaneous live image monitoring, and playback recordings in single views. Print single images or create an AVI to be easily shared as evidence.



Recordings Viewer



Live Monitor

"We chose the Milestone IP network platform to furnish security to our entire organization, and to be ready for expansions. Digital technology also gives more flexibility to view images faster." Ashraf Selim, Chief Information Officer at Rosenthal & Rosenthal



XProtect Professional

has advanced functionality.

VIDEO & AUDIO RECORDING

- ◆ Available in packages handling 1, 4, 9, 16, 25 or 36 cameras.
- ◆ Dual or triple computer monitor viewing support.
- ◆ Simultaneous video recording, viewing and playback of images.
- ◆ Multi-channel audio recording with instant playback.
- ◆ Recording technology: high speed database holding JPEG images.
- ◆ Daily archiving can be automatically moved to a network drive with images still available for playback.
- ◆ Recording/viewing speed: 30+ frames per second per camera (25+ for PAL), only limited by hardware.
- ◆ Recording quality: JPEG 1280x1024 or better. All resolutions depend on IP cameras and video servers.
- ◆ Recording capacity: 600,000 images per camera per day for unlimited number of days.
- ◆ Instant search on recordings based on date/time and activity/alarm (Video Motion Detection).

PTZ CONTROL

- ◆ Pan/Tilt/Zoom preset position, up to 25 positions per camera.
- ◆ VMD sensitive PTZ patrolling among selected presets.
- ◆ PTZ go-to preset position on events.
- ◆ IPIX virtual technology for PTZ in fisheye lens recorded images.
- ◆ Remote PTZ camera control through the built-in web server.

MOTION DETECTION

- ◆ Fully adjustable, built-in, real time Video Motion Detection.
- ◆ VMD supports excluded zones.
- ◆ Speed Up on Motion: cameras can be set to speed up the number of frames when motion is detected or an event occurs, like activation of an external sensor.
- ◆ Active alerting through sound, email and SMS.

EVIDENCE DOCUMENTATION

- ◆ Export images as single JPEGs, as a printed report with a single image, or as an AVI with audio as an option.
- ◆ Export images in the original database format for viewing with the Recordings Viewer.
- ◆ Export audio recordings in WAV format.

REMOTE ACCESS

- ◆ From remote locations via the web interface you can view live video in single or quad views, or browse and playback recorded images from one camera.
- ◆ The built-in web server that provides remote access to live cameras and recordings also allows advanced user profiles via the camera-to-user assignment function: the main administrator can set up separate users to view specific cameras for their locations only.
- ◆ Logging information shows which users have logged on through the web server interface, with which IP-address, and when.
- ◆ Results can be generated as a printed report of a single JPEG with time and date stamp or as an AVI film.
- ◆ Control your PTZ cameras and view alarm summaries remotely.
- ◆ Activate output relays for remote control of gates, etc.

INTEGRATION

- ◆ XProtect Professional offers integration with XProtect Transact for monitoring transaction events with Point-of-Sale or ATM data.
- ◆ XProtect Professional also offers integration with XProtect Matrix for instant transmission of live video to any network monitor.

MINIMUM SYSTEM REQUIREMENTS:

For up to 500 fps* in total:

OS: Windows 2000 Pro, 2000 Server, XP Pro, 2003 Server

CPU: Dual P4 Xeon, 2.4 GHz

RAM: 1 Gbyte

Network: Ethernet 1 Gbit

Video card: AGP (min. 1024x768)

Video colors: True 24 bit

HDD: Fast SCSI

**Resolution 352x288 (12-18 KB image size)*

For up to 200 fps* in total:

OS: Windows 2000 Pro, 2000 Server, XP Pro, 2003 Server

CPU: Pentium 4, 2.4 GHz

RAM: 1 Gbyte

Network: Ethernet 100 Mbit

Video card: AGP (min. 1024x768)

Video colors: True 24 bit

HDD: E-IDE (7200 rpm recommended)

**Resolution 352x288 (12-18 KB image size)*

