

EX27 Series

The EX27 integrated camera is an all-weather system that includes all of the best features of a plug and play camera without compromise to CCD optics and lens quality. Full size lenses with varifocal auto-iris features are integrated as standard equipment to ensure that you get the picture under extreme outdoor lighting conditions.

The EX27 is rugged, compact, power protected, weather protected, easily installed and industrial designed. This integrated design sets a new benchmark for the all-in-one surveillance camera.

The EX27 is available with several CCD options including Quattro for color/mono/infrared switching:

- EX27S3** - Monochrome with 420 line - 1/3" CCD
- EX27S7** - Extended IR with 600 line - 1/2" CCD
- EX27C3** - Color with 350 line - 1/3" CCD
- EX27C7** - Color with 480 line Sony 1/3" CCD
- EX27Q3** - Quattro Color/Mono with 350 line 1/3" CCD
- EX27Q7** - Quattro Color/Mono with 480 Line 1/3" CCD

Applications:

- *Extreme outdoor for rugged, effective all-weather CCTV surveillance*
- *Outdoor Night-Time Surveillance*
- *Versatile Quick-Installation CCTV*
- *Hi-Performance Model (EX27S.700) for Covert Video Surveillance*
- *Architectural projects requiring compact, non-obtrusive high performance cameras*

Features:

- *Cast & extruded aluminum*
- *Glass window*
- *Variety of high performance CCD's available*
- *Voltage regulation /Power protection*
- *Input power in 12 – 24 volts AC or DC*
- *Easy access for lens adjustments.*
- *Universal mounting bracket included.*



Above: The EX27 Series cameras are all equipped with auto-iris varifocal lenses. Shown above with the optional bracket EXMB.023, the industrial-designed EX27 camera is available in standard monochrome, color and Quattro models. All models are based on latest generation Sony sensors.



Left:
An EX27S7-VA612 is equipped with an S700 high performance infrared sensor and a varifocal auto-iris lens. When matched with a UF500 infrared illuminator, night time surveillance beyond 250 feet (80 meters) can be expected in total darkness.



Below Left:
An EX27Q3-VA358 Quattro camera is integrated with twin UF100 infrared illuminators to provide color by day and infrared supported monochrome video surveillance at night.

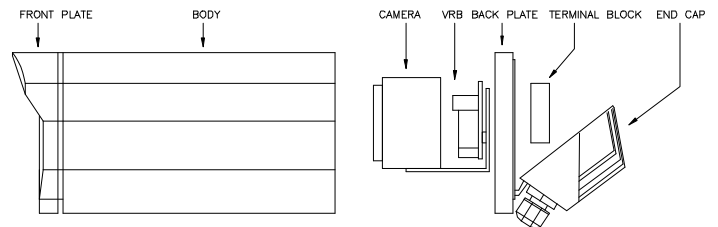
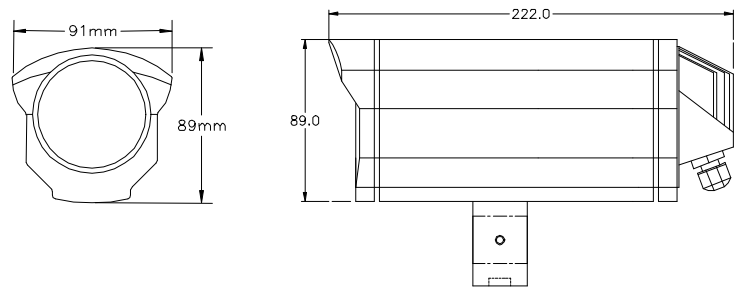
Dealer / Distributor :

Global HQ: www.ExtremeCCTV.com

USA / Canada: 4060 McConnell Drive, Burnaby, BC Canada V5A 3A8
Toll Free N.A. 888-409-2288 Tel. +1.604.420.7711 Fax +1.604.420.3300

EX27 - General Specifications

CCD Cameras	Various Models – See Part Numbers S300, S700, C300, C700, Q300, Q700
Consumption	3 W max. for color / Quattro models 2 W max. for mono models
Voltage	12 VDC or 24 VAC selectable
Construction	Robust aluminum casting / extrusion Gasketed/Sealed to IP66 / NEMA4
Weight	1.4 kg (3.1 lbs)
Color	Black (other colors by special order)
Mount	Double U-Mount Supplied with ¼-20
Wall Bracket	Optional – see below
Cabling	1.6 m (5 feet) of Belden Multi-Pair



Part Numbers:

Special Order – EX27 Cameras Without Lenses

- EX27S.300cs** Mono, 1/3" Sony CCD 420 TVL Optimized IR
- EX27S.700cs** Mono, 1/2" Sony CCD 600 TVL Extended IR
- EX27C.300cs** Color 1/3" Sony CCD 350 TVL, BLC
- EX27C.700cs** Color 1/3" Sony CCD 480 TVL, BLC
- EX27Q.300cs** Quattro – Color/Mono/IR Sensing/ PC - 350 TVL
- EX27Q.700cs** Quattro – Color/Mono/IR Sensing/ PC - 480 TVL

Monochrome Infrared Cameras with Auto-Iris Varifocal Lenses

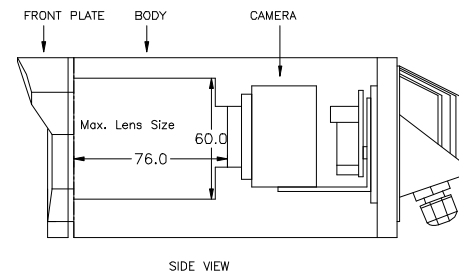
- EX27S3-VA358** Mono, S300, 420 TVL, cs-Varifocal AI, 3.5 – 8 mm
- EX27S3-VA612** Mono, S300, 420 TVL, cs-Varifocal AI, 6 – 12 mm
- EX27S7-VA612** Mono, S700, 600 TVL, cs-Varifocal AI, 6 – 12 mm

Color Cameras with Auto-Iris Varifocal Lenses

- EX27C3-VA358** Color, C300, 350 TVL, cs-Varifocal AI, 3.5 – 8 mm
- EX27C3-VA612** Color, C300, 350 TVL, cs-Varifocal AI, 6 – 12 mm
- EX27C7-VA358** Color, C700, 480 TVL, cs-Varifocal AI, 3.5 – 8 mm
- EX27C7-VA612** Color, C700, 480 TVL, cs-Varifocal AI, 6 – 12 mm

Quattro- Color-Infrared Cameras with Auto-Iris Varifocal Lenses

- EX27Q3-VA358** QUATTRO, Q300, 350 TVL, cs-Varifocal AI, 3.5 – 8 mm
- EX27Q3-VA612** QUATTRO, Q300, 350 TVL, cs-Varifocal AI, 6 – 12 mm
- EX27Q7-VA358** QUATTRO, Q700, 480 TVL, cs-Varifocal AI, 3.5 – 8 mm
- EX27Q7-VA612** QUATTRO, Q700, 480 TVL, cs-Varifocal AI, 6 – 12 mm



Optional Items:

- EXPS.002** Power Supply, 12 VDC, 500 mA, w/ 2.1 mm plug
- EXMB.001** Wall Bracket, structural aluminum, w/ Heavy Duty P/T Head
- EXMB.020** L-Bracket, Heavy Duty (no P/T head)
- EXMB.023** Wall Bracket, die-cast (no P/T head)
- EXMB.025** Wall Bracket, die-cast aluminum, w/ Std Mount P/T Head
- EXMB.026** Wall Bracket, die-cast aluminum, w/ Heavy Duty P/T Head
- EXMB.011** Twin Unit Adaptor (T-Bar)

Dealer / Distributor :

Global HQ: www.ExtremeCCTV.com
USA / Canada: 4060 McConnell Drive, Burnaby, BC Canada V5A 3A8
Toll Free N.A. 888-409-2288 Tel. +1.604.420.7711 Fax +1.604.420.3300