

## Enjoy Greater Monitoring Convenience



Now in addition to JPEG format, you can choose MPEG-4 with simultaneous audio recording. This lets you record smooth moving images even with limited network speeds. Equipped with a wealth of new functions, the BB-HNP15 boosts the accuracy of motion detection, lets you customise the operating screens, and converts recorded data to other formats, like Windows Media Player, for easier, more comfortable monitoring. If you want to get the most out of your network camera system, with applications like market surveys or heightened security, you'll enjoy the added convenience of the BB-HNP15 - and the additional business opportunities that it delivers.



Parking lots



Stores



Entrances



Warehouses

See There  
When You Can't Be There™

### Zero Distance Management

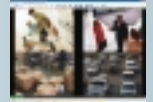
Zero Distance Management is a new business style made possible by Panasonic network cameras. It allows safe, smooth, economical business management that is totally free from conventional distance and time limitations.

### System Diagram

Panasonic network cameras make it possible to monitor from any place, at any time, over the Internet. The BB-HNP15 further increases this monitoring convenience.



% ,



! "
# % \$ & '
! " \$ ( %
#
7! ! ! %

( ' \$
3 % &
( #
# - # ,(
% % ! "
\*!
4 "( \$
7 "
4 "!

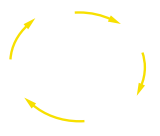
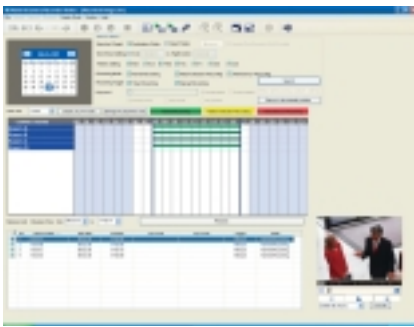
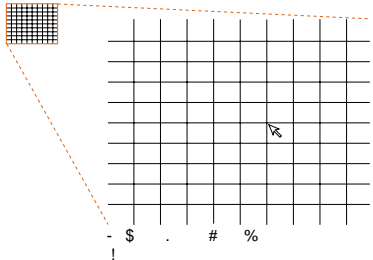
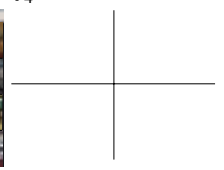
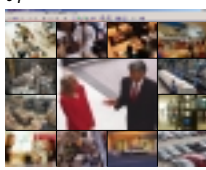
& ' \$
8 ! ! % " 9
! % & ! ! % !
!! & ! ! & !!
" & & ( ,!
: # ! "( \$ %
,! % ! "
! + % ! " % (
"! (" ;

# \$
,! "# ! - (
// . \$ " %
. ,! ! %
! !
" 0! #
% 1&
& 1& 2
1 ( !!! % (
2 B / !!! % (
\$ . # %
!

% \$\$ \$
) ! ! \* " "
! \$ & \$ !
& + &
! ,! \$ "
# # "
& # %
! % %

\* ' \$
7! ! &
! " ! (
,! ! ! #
! ! \$
% # &
% ! " ! \$
"
) \$
• \$
•(
•+

Table with 2 columns and 3 rows: 3 4 ,", 4 56, 75



% < =

% (
# ! ! ! ( % (
- # " & B : ! % % ! -
6 " + " A " ! ! "
- ? " & & " &
% & & @
6 + C " A " ! ! "
- ! % ( % ? C C+ &
( ! & & " & # @
% (
) % % 0 % # 96 #
) \$ & \$ #
) + ? / \* 1 / 1 D / \* / 1 @ '
6 . \* ? \* @ 4 # " & & % #
) # % ? ( E C ! ) # @ &
% 9 C ( ) #

% % 3 ! ! " % % -
) % " ? ! ! # " # ! ! %
! & ! ( " @ 6 % !
! ! ! ( # ! ? # "
( % % ( A @ ! % ! (
% % ! ( " %
\$ % > " ( " %
? / ! ( ! % % !
) ! ( ! ! % % !
3 \$ " ! % ! % \$ &
% ! ! % ( ! ! #
" ( \$ "( \$ % ! # & "( \$ % %
"( \$ # "( \$ #
( "( \$ % %

Table with 2 columns and 5 rows: 0 % #, 4 #, 6, 7, 4

Table with 2 columns and 5 rows: ? @, 1D/\*1/, :/\*D/, 21/\*1/, G\*

Table with 2 columns and 3 rows: ? @, :/\*D/, 21/\*1/, G\*

! 9 : ; ) % & (
? @ ( " " @
: / \* D / F : D \$ (
2 1 / \* 1 / 2 D \$ (
G \* 1 D \$ (
\$ % & ( ) ! \$ % & ( ) !

\$ % & ( " \$ % & ( ) \* ( + , + . , ( + / , ( ( \$ % & ( 0 % & ( ) +
! 1 " . + , ( +
( ! 1 " . + , ( +

